

STAINLESS STEEL

PHONE: 516.328.3300 • FAX: 516.326.8827 • WWW.SDP-SI.COM

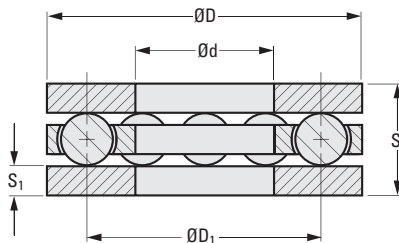
> MATERIAL:

- Balls** - 440C Stainless Steel, Hardened to HRC 58...65
- Retainer** - Molded Nylon, for 120°C Max.
- Washer** - 410 Stainless Steel, Hardened to HRC 38...42



**ADDITIONAL BEARING COMPONENTS
USED ON COMPLETE THRUST BEARING**

Reference (Complete Bearing Set)	Catalog Number	
	Retainer & Balls	Washer
A 7Z 7M0409ST	A 7M 7M0409ST	A 7Y 7M0409
A 7Z 7M0512ST	A 7M 7M0512ST	A 7Y 7M0512
A 7Z 7M0614ST	A 7M 7M0614ST	A 7Y 7M0614
A 7Z 7M0717ST	A 7M 7M0717ST	A 7Y 7M0717
A 7Z 7M0816ST	A 7M 7M0816ST	A 7Y 7M0816
A 7Z 7M1021ST	A 7M 7M1021ST	A 7Y 7M1021
A 7Z 7M1224ST	A 7M 7M1224ST	A 7Y 7M1224
A 7Z 7M1628ST	A 7M 7M1628ST	A 7Y 7M1628
A 7Z 7M1932ST	A 7M 7M1932ST	A 7Y 7M1932
A 7Z 7M2541ST	A 7M 7M2541ST	A 7Y 7M2541
A 7Z 7M2844ST	A 7M 7M2844ST	A 7Y 7M2844



METRIC COMPONENT

Catalog Number (Complete Bearing Set)	d		D		D ₁ Ball Circle	S ₁ Washer		S Total Bearing Thickness
	Bore	Tolerance	O.D.	Tolerance		Thk.	Tolerance	
A 7Z 7M0409ST	4.01	4.06...4.01	8.99	9.04...8.94	6.5	1.27	± 0.03	4.24...4.04
A 7Z 7M0512ST	5	5.21...5.08	12	11.96...11.78	8.7	1.27	± 0.05	5.02...4.82
A 7Z 7M0614ST	6	6.20...6.07	14	13.97...13.79	10.3	1.27	± 0.05	5.02...4.82
A 7Z 7M0717ST	7	7.18...7.06	17	16.97...16.79	11.9	1.27	± 0.05	5.02...4.82
A 7Z 7M0816ST	8	8.20...8.08	16	15.96...15.80	11.9	1.27	± 0.05	5.02...4.82
A 7Z 7M1021ST	10	10.19...10.06	21	20.96...20.78	15.1	1.57	+0.06/-0.05	6.44...6.22
A 7Z 7M1224ST	12	12.19...12.06	24	23.98...23.80	18.3	1.57	+0.06/-0.05	6.44...6.22
A 7Z 7M1628ST	16	16.26...16.07	28	27.97...27.74	22.2	2.36	± 0.08	8.88...8.56
A 7Z 7M1932ST	19	19.25...19.08	32	31.98...31.75	25.4	2.36	± 0.08	8.88...8.56
A 7Z 7M2541ST	25	25.30...25.07	41	40.97...40.69	33.3	3.18	+0.12/-0.13	11.36...10.86
A 7Z 7M2844ST	28	28.30...28.07	44	43.97...43.69	36.5	3.18	+0.12/-0.13	11.36...10.86

Catalog Number Ref. (Complete Bearing Set)	No. of Balls	Size of Balls ± 0.0025	Load Rating N	
			15 rpm	100 rpm
A 7Z 7M0409ST	6	1.587	156	80
A 7Z 7M0512ST	7	2.38	391	218
A 7Z 7M0614ST	8	2.38	405	214
A 7Z 7M0717ST	9	2.38	423	222
A 7Z 7M0816ST	9	2.38	423	222
A 7Z 7M1021ST	6	3.18	543	289
A 7Z 7M1224ST	8	3.18	623	329
A 7Z 7M1628ST	6	3.97	778	414
A 7Z 7M1932ST	8	3.97	912	480
A 7Z 7M2541ST	10	4.76	1428	756
A 7Z 7M2844ST	12	4.76	1566	832

NOTE: Load rating @ 900 rpm approximately 50% of those @ 100 rpm. Other data available.

STEEL

PHONE: 516.328.3300 • FAX: 516.326.8827 • WWW.SDP-SI.COM

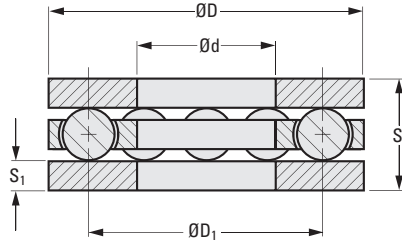
> MATERIAL:

- Balls** - S.A.E 1018 Steel, Hardened to HRC 60 Min.
- Retainer** - Molded Nylon, for 120°C Max.
- Washer** - CR1075 Steel, Hardened to HRC 59...61



**ADDITIONAL BEARING COMPONENTS
USED ON COMPLETE THRUST BEARING**

Reference (Complete Bearing Set)	Catalog Number	
	Retainer & Balls	Washer
A 7Z 7M0409	A 7M 7M0409	A 7Q 7M0409
A 7Z 7M0512	A 7M 7M0512	A 7Q 7M0512
A 7Z 7M0614	A 7M 7M0614	A 7Q 7M0614
A 7Z 7M0717	A 7M 7M0717	A 7Q 7M0717
A 7Z 7M0816	A 7M 7M0816	A 7Q 7M0816
A 7Z 7M1021	A 7M 7M1021	A 7Q 7M1021
A 7Z 7M1224	A 7M 7M1224	A 7Q 7M1224
A 7Z 7M1628	A 7M 7M1628	A 7Q 7M1628
A 7Z 7M1932	A 7M 7M1932	A 7Q 7M1932
A 7Z 7M2541	A 7M 7M2541	A 7Q 7M2541
A 7Z 7M2844	A 7M 7M2844	A 7Q 7M2844



METRIC COMPONENT

Catalog Number (Complete Bearing Set)	d		D		D ₁ Ball Circle	S ₁ Washer		S Total Bearing Thickness
	Bore	Tolerance	O.D.	Tolerance		Thk.	Tolerance	
A 7Z 7M0409	4.01	4.06...4.01	8.99	9.04...8.94	6.5	1.27	± 0.03	4.24...4.04
A 7Z 7M0512	5	5.21...5.08	12	11.96...11.78	8.7	1.27	± 0.05	5.02...4.82
A 7Z 7M0614	6	6.20...6.07	14	13.97...13.79	10.3	1.27	± 0.05	5.02...4.82
A 7Z 7M0717	7	7.18...7.06	17	16.97...16.79	11.9	1.27	± 0.05	5.02...4.82
A 7Z 7M0816	8	8.20...8.08	16	15.96...15.80	11.9	1.27	± 0.05	5.02...4.82
A 7Z 7M1021	10	10.19...10.06	21	20.96...20.78	15.1	1.57	+0.06/-0.05	6.44...6.22
A 7Z 7M1224	12	12.19...12.06	24	23.98...23.80	18.3	1.57	+0.06/-0.05	6.44...6.22
A 7Z 7M1628	16	16.26...16.07	28	27.97...27.74	22.2	2.36	± 0.08	8.88...8.56
A 7Z 7M1932	19	19.25...19.08	32	31.98...31.75	25.4	2.36	± 0.08	8.88...8.56
A 7Z 7M2541	25	25.30...25.07	41	40.97...40.69	33.3	3.18	+0.12/-0.13	11.36...10.86
A 7Z 7M2844	28	28.30...28.07	44	43.97...43.69	36.5	3.18	+0.12/-0.13	11.36...10.86

Catalog Number Ref. (Complete Bearing Set)	No. of Balls	Size of Balls ± 0.0025	Load Rating N	
			15 rpm	100 rpm
A 7Z 7M0409	6	1.587	227	120
A 7Z 7M0512	7	2.38	560	311
A 7Z 7M0614	8	2.38	583	307
A 7Z 7M0717	9	2.38	605	320
A 7Z 7M0816	9	2.38	605	320
A 7Z 7M1021	6	3.18	778	414
A 7Z 7M1224	8	3.18	894	472
A 7Z 7M1628	6	3.97	1116	592
A 7Z 7M1932	8	3.97	1303	689
A 7Z 7M2541	10	4.76	2042	1081
A 7Z 7M2844	12	4.76	2242	1188

NOTE: Load rating @ 900 rpm approximately 50% of those @ 100 rpm. Other data available.

- I
- R
- T
- 1
- 2
- 3
- 4
- 5
- 6
- 7
- 8
- 9
- 10
- 11
- 12
- 13
- 14
- 15
- A

ECONOMICAL
DIN-1494

PHONE: 516.328.3300 • FAX: 516.326.8827 • WWW.SDP-SI.COM

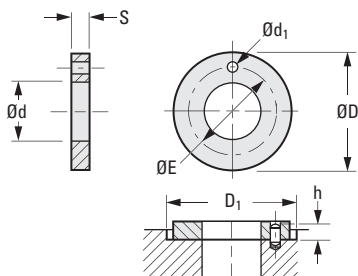
› **MATERIAL:**
G300® Polymer

› **OPERATING TEMPERATURE:**
Continuous: -40°C to +130°C
Intermittent: +220°C

› **FEATURES:**
Maintenance-Free
Dry Running
High Wear Resistance
Resistant to Dust and Dirt
Vibration Damping

› **SPECIFICATIONS:**
Tensile Strength at 20°C: 2137 kgf/cm²
Compressive Strength: 794 kgf/cm²
Coefficient of Friction (dynamic against steel): 0.08...0.15
PV Value, max. (dry): 256 kgf/cm² x m/min

Other sizes available upon request



METRIC COMPONENT

Catalog Number	d +0.25 0	D Dia. 0 -0.25	S Thickness 0 -0.05	E Dia. ± 0.12	d ₁ +0.375 +0.125	h ± 0.2	D ₁ +0.12 0
S99GGTM050906	5	9.5	0.6	*	*	*	9.5
S99GGTM062015	6	20	1.5	13	1.5	1	20
S99GGTM071305	7	13	0.5	*	*	*	13
S99GGTM081515	8	15	1.5	*	*	*	15
S99GGTM101810	10	18	1	*	*	*	18
S99GGTM122415	12	24	1.5	18	1.5	1	24
S99GGTM152415	15	24	1.5	19.5	1.5	1	24
S99GGTM183215	18	32	1.5	25	2	1	32
S99GGTM203615	20	36	1.5	28	3	1	36

* No hole

HIGH LOAD
HIGH-SPEED
ISO 3547-1

PHONE: 516.328.3300 • FAX: 516.326.8827 • WWW.SDP-SI.COM



> MATERIAL:

T500® Polymer

> OPERATING TEMPERATURE:

Continuous: -100°C to +250°C

Intermittent: +315°C

> FEATURES:

- High Compression Strength
- Chemical-Resistant
- Very Low Moisture Absorption
- Great Wear Resistance

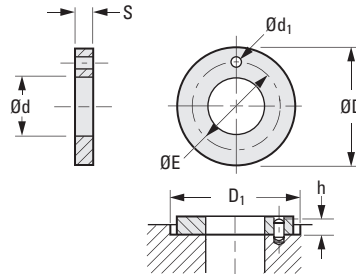
> SPECIFICATIONS:

Tensile Strength at 20°C: 1733 kgf/cm² psi

Compressive Strength: 1019 kgf/cm²

Coefficient of Friction (dynamic against steel): 0.09...0.27

PV Value, max. (dry): 808 kgf/cm² x m/min



METRIC COMPONENT

Catalog Number	d +0.25 0	D Dia. 0 -0.25	S Thickness 0 -0.05	E ± 0.12	d ₁ +0.375 +0.125	h ± 0.2	D ₁ +0.12 0
S99GTTM062015	6	20	1.5	13	1.5	1	20
S99GTTM081815	8	18	1.5	13	1.5	1	18
S99GTTM101810	10	18	1.5	*	*	*	18
S99GTTM122415	12	24	1.5	18	1.5	1	24
S99GTTM142615	14	26	1.5	20	2	1	26
S99GTTM152415	15	24	1.5	19.5	1.5	1	24
S99GTTM163015	16	30	1.5	22	2	1	30
S99GTTM183215	18	32	1.5	25	2	1	32
S99GTTM203615	20	36	1.5	28	3	1	36
S99GTTM223815	22	38	1.5	30	3	1	38
S99GTTM244215	24	42	1.5	33	3	1	42
S99GTTM264415	26	44	1.5	35	3	1	44
S99GTTM284815	28	48	1.5	38	4	1	48
S99GTTM325415	32	54	1.5	43	4	1	54
S99GTTM386215	38	62	1.5	50	4	1	62
S99GTTM426615	42	66	1.5	54	4	1	66
S99GTTM487420	48	74	2	61	4	1.5	74
S99GTTM527820	52	78	2	65	4	1.5	78
S99GTTM629020	62	90	2	76	4	1.5	90

* No hole