



| Catalog Series | Unique Features | Material | Bore | Pages |
|---|---|--|------------------------|-------|
|  S57PY5-SU... | Single, Miniature, Zero Backlash | 303 Stainless Steel Body, 440 Stainless Steel Balls | Solid .0938 to .250 | 7-4 |
|  S57PY5-DU... | Double, Miniature, Zero Backlash | 303 Stainless Steel Body, 440 Stainless Steel Balls | .0938 to .250 | 7-4 |
|  S57PY4-SFU... | Single, Inverted Design, Zero Backlash | 303 Stainless Steel Body, 440 Stainless Steel Balls | .1875 to .500 | 7-5 |
|  S57PY4-DFU... | Double, Inverted Design, Zero Backlash | 303 Stainless Steel Body, 440 Stainless Steel Balls | .1875 to .500 | 7-5 |
|  A 5Y 8-DM... | Single, Short Series, Solid and Bored | 303 Stainless Steel | Solid 3/16 to 1/2 | 7-6 |
|  A 5Y 8-DU... | Single, Step-Down Series | 303 Stainless Steel | .125 to .250 | 7-6 |
|  A 5Q 8-D... | Single, Standard Design, Solid and Bored | Alloy Steel | Solid .1875 to .500 | 7-7 |
|  A 5Q 8-DM... | Single, Solid and Bored | Alloy Steel | Solid 3/16 - 1/2 | 7-8 |

| Catalog Series | Unique Features | Material | Bore | Pages |
|--|---|--|-------------------------|-------|
|  A 5Q 8-D... | Single, Hand-Operated | Die Cast Zinc | 1/4 to 1/2 | 7-8 |
|  A 5X 8-SE... | Double, Telescoping, Heat- and Corrosion-Resistant | 303 Series SS Joints, 416 Stainless Steel Spline | .2500 to .6250 | 7-9 |
|  A 5Q 8-DD... | Double, Slow Speed | Alloy Steel | Solid .1875 to .5000 | 7-9 |
|  S57PY5-DUT... | Double, Telescoping, Miniature, Ball Spline, Zero Backlash | 303 Stainless Steel Body, 440 Stainless Steel Balls | .0938 to .2500 | 7-10 |
|  S57PY4-DFUT... | Double, Telescoping, Inverted Design, Ball Spline, Zero Backlash | 440 Stainless Steel Body, 440 Stainless Steel Balls | .1875 to .5000 | 7-10 |
|  A 5M 8-D... | Single, Molded, Economy Series | Acetal | 1/8 to 7/16 | 7-12 |
|  A 5M 8-DD... | Double, Molded, Economy Series | Acetal | 1/8 to 7/16 | 7-12 |

| Catalog Series | Unique Features | Material | Bore | Pages |
|---|---|---|-----------------|-------|
|  <p>A 5T 8-D...</p> | Single, Molded, Brass Spider | Acetal Body, Brass Spider | 1/8 to 7/16 | 7-13 |
|  <p>A 5Z 8-D...</p> | Single, Molded, Brass Spider & Inserts | Acetal Body, Brass Spider & Inserts | 1/8 to 3/8 | 7-13 |
|  <p>A 5T 8-DD...</p> | Double, Molded, Brass Spider | Acetal Body, Brass Spider | 1/8 to 7/16 | 7-14 |
|  <p>A 5Z 8-DD...</p> | Double, Molded, Brass Spider and Inserts | Acetal Body, Brass Spider and Inserts | 1/8 to 3/8 | 7-14 |
|  <p>A 5M 8-SE...</p> | Double, Telescoping, Molded, Economy Series | Acetal | 3/16, 1/4, 5/16 | 7-15 |
|  <p>A 5T 8-SE3...</p> | Double, Telescoping, Molded, Brass Spider, 3/8 O.D. | Acetal Body & Extension, Brass Spider | 3/16 & 1/4 | 7-16 |
|  <p>A 5Z 8-SE3...</p> | Double, Telescoping, Molded, Brass Spider and inserts, 3/8 O.D. | Acetal Body and Extension, Brass Spider and Inserts | 1/8 & 3/16 | 7-16 |
|  <p>A 5T 8-SE4...</p> | Double, Telescoping, Molded, Brass Spider, 1/2 O.D. | Acetal Body and Extension, Brass Spider | 3/16, 1/4, 5/16 | 7-17 |

| Catalog Series | Unique Features | Material | Bore | Pages |
|--|---|---|------------|-------|
|  <p>A 5Z 8-SE4..</p> | Double, Telescoping, Molded, Brass Spider and Inserts, 1/2 O.D. | Acetal Body and Extension, Brass Spider and Inserts | 3/16 & 1/4 | 7-17 |
|  <p>A 5Z 8-SEB...</p> | Double, Telescoping, Molded, Brass Spider Inserts and Extension | Acetal Body, Brass Spider, Inserts and Extension | 1/8 to 3/8 | 7-18 |

I

R

T

1

2

3

4

5

6

7

8

9

10

11

12

13

14

15

16

SINGLE & DOUBLE JOINTS
ZERO BACKLASH

PHONE: 516.328.3300 • FAX: 516.326.8827 • WWW.SDP-SI.COM

> MATERIAL:

Body - 303 Stainless Steel
Balls - 440 Stainless Steel

> LUBRICATION:

Dual protection, with sealed-in solid film plus oil suspension

> FEATURES:

Zero backlash through use of precision balls and burnished sockets
Sealed-in lubrication
Lightweight
Low inertia

> SPECIFICATIONS:

Maximum Operating Angle:

Single Joint: 30° at 4000 rpm
Double Joint: 60° at 4000 rpm

Torque Ratings:

For static conditions with in-line loading, maximum load being one which causes joint to yield.

Set screws are available on special order.

These joints can be made into telescoping units by mating them with telescoping miniature ball splines:

S59PY5-... - pg. 4-24

S59PQ5-... - pg. 4-25

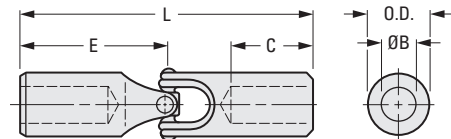
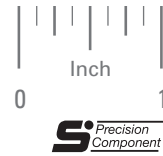


Fig. 1 Single Joint

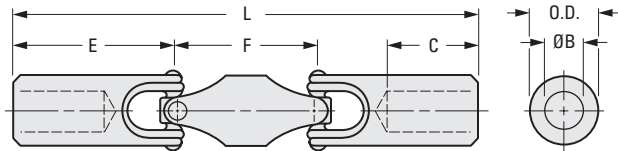


Fig. 2 Double Joint

INCH COMPONENT

| Catalog Number | O.D. | B Bore +.0005 -.0000 | C Bore Depth | E End Unit | F Center | L | Torque ozf in. |
|----------------------------|------|----------------------------|--------------|------------|----------|-------|-------------------|
| Fig. 1 Single Joint | | | | | | | |
| S57PY5-SU0306 | 3/16 | .0938 | 11/32 | 1/2 | — | 1 | 16 |
| S57PY5-SU0406 | | .1250 | | | | | |
| S57PY5-SU0609 | 9/32 | .1875 | 7/16 | 11/16 | — | 1-3/8 | 64 |
| S57PY5-SU0812 | 3/8 | .2500 | 1/2 | 7/8 | | 1-3/4 | 256 |
| Fig. 2 Double Joint | | | | | | | |
| S57PY5-DU0306 | 3/16 | .0938 | 11/32 | 1/2 | 1/2 | 1-1/2 | 16 |
| S57PY5-DU0406 | | .1250 | | | | | |
| S57PY5-DU0609 | 9/32 | .1875 | 7/16 | 11/16 | 5/8 | 2 | 64 |
| S57PY5-DU0812 | 3/8 | .2500 | 1/2 | 7/8 | 3/4 | 2-1/2 | 256 |

