

BALL SCREWS



HIGH LIFE EXPECTANCY
EXCELLENT COST PERFORMANCE RATIO

PHONE: 516.328.3300 • FAX: 516.326.8827 • WWW.SDP-SI.COM



> MATERIAL:

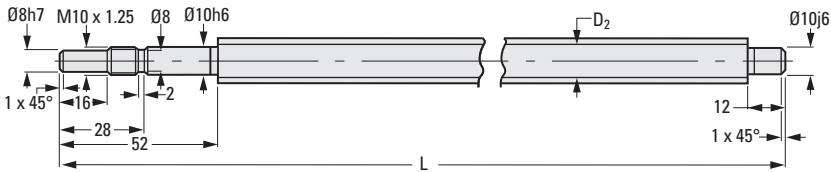
Cf 53 induction-hardened to HRC 62 ± 2

> SPECIFICATIONS:

Pitch accuracy ≤ 0.1 mm / 300 mm,
ISO class 7.
Screw pitches of 2.5, 4, 5, 10 and 20 mm.
Available with machined and unmachined
ends in lengths up to 3 m.
Ø16 mm, rolled and polished.

Produce greater than 90% efficiency in
converting rotary to linear motion.

Machined screws are designed to be held
by a double bearing on one side and on the
other side by either a floating bearing, or no
bearing and a guiding ball nut.



Root Diameter: $D_2 = 12.98$ for 5, 10, 20 mm Pitch
 $D_2 = 13.34$ for 2.5 mm Pitch

**METRIC COMPONENT
CATALOG NUMBER**

S 6 5 1 3 H M L 2

Machining				Length	L**
0 - Unmachined				Code	Length (mm)
2 - Machined	Pitch Code (mm)			045 - 452	
	025 - 2.5			* 055 - 552	
	040 - 4			065 - 652	
	050 - 5			* 075 - 752	
	100 - 10			085 - 852	
	200 - 20			* 095 - 952	
				105 - 1052	

* These lengths are available machined only.

** Longer ball screws available on special request.

- I
- R
- T
- 1
- 2
- 3
- 4
- 5
- 6
- 7
- 8
- 9
- 10
- 11
- 12
- 13
- 14
- 15
- A

SERIES 1 ANTI-BACKLASH BALL NUTS



THIS ISEL BALL NUT IS A PATENTED ANTI-BACKLASH DESIGN

PHONE: 516.328.3300 • FAX: 516.326.8827 • WWW.SDP-SI.COM



> MATERIAL:

- Balls** - Hardened Steel HRC 63 ± 2
- Ball Nut** - Steel, Cf 53, ground, polished and hardened to HRC 62 ± 2

> SPECIFICATIONS:

Repeatability of 0.01 mm and accuracy of 0.1 mm/300 mm when used with our ball screws. Blank shaft is used to retain balls during shipment. Can be used with 16 mm ball screws; see index. Available in 2 heights of 25.3 mm and 28.5 mm.

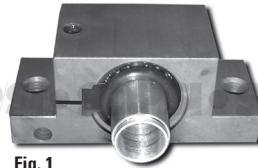


Fig. 1



Fig. 2

Photographed with blank shaft to retain balls.

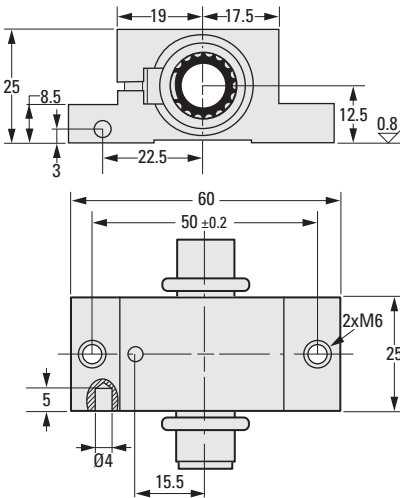


Fig. 1

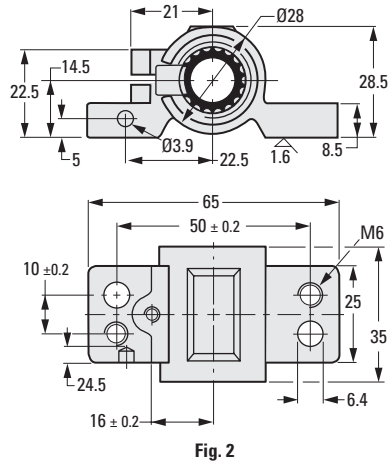


Fig. 2

METRIC COMPONENT

Catalog Number	Fig. No.	Pitch
S6653HM2130040	1	4
S6653HM2130050		5
S6653HM2130100	2	10
S6653HM2130200		20

