

METRIC TO METRIC REDUCTION

PHONE: 516.328.3300 • FAX: 516.326.8827 • WWW.SDP-SI.COM

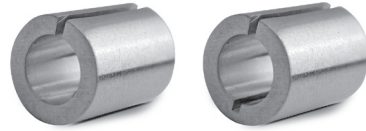
> MATERIAL:

Aluminum



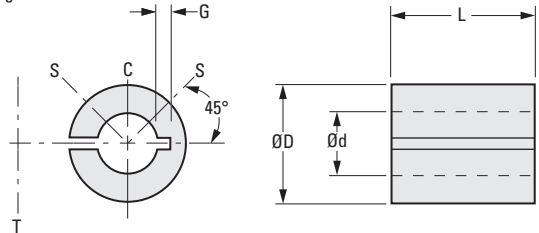
> INSTALLATION RECOMMENDATIONS:

- S = set screw positions in hub
- C = for single set screw fastening
- T = for tangential screw in clamp hub



> SPECIFICATIONS:

Bore reducers with thicker walls may have slot extending into opposite wall for additional flexibility. D and d tolerances are maintained before slitting.



The projections shown are per ISO convention.

METRIC COMPONENT

Catalog Number	D Dia. +0.013 -0.025	d Bore +0.025 0	G Groove Depth	L
A 7A30M060309	6	3	0.64	9 (.354)
A 7A30M060312	6	3	(.025)	12 (.472)
A 7A30M060409	6	4	-	9 (.354)
A 7A30M060412	6	4	-	12 (.472)
A 7A30M060509	6	5	-	9 (.354)
A 7A30M060512	6	5	-	12 (.472)
A 7A30M080412	8	4	-	12 (.472)
A 7A30M080416	8	4	-	16 (.625)
A 7A30M080512	8	5	-	12 (.472)
A 7A30M080516	8	5	-	16 (.625)
A 7A30M080612	8	6	-	12 (.472)
A 7A30M080616	8	6	-	16 (.625)
A 7A30M100512	10	5	-	12 (.472)
A 7A30M100516	10	5	-	16 (.625)
A 7A30M100522	10	5	-	22 (.865)
A 7A30M100612	10	6	-	12 (.472)
A 7A30M100616	10	6	-	16 (.625)
A 7A30M100622	10	6	-	22 (.865)

Catalog Number	D Dia. +0.013 -0.025	d Bore +0.025 0	G Groove Depth	L
A 7A30M100812	10	8	-	12 (.472)
A 7A30M100816	10	8	-	16 (.625)
A 7A30M100822	10	8	-	22 (.865)
A 7A30M120622	12	6	1.27	22 (.865)
A 7A30M120635	12	6	(.050)	35 (1.377)
A 7A30M120822	12	8	0.89	22 (.865)
A 7A30M120835	12	8	(.035)	35 (1.377)
A 7A30M121022	12	10	-	22 (.865)
A 7A30M121035	12	10	-	35 (1.377)
A 7A30M141022	14	10	0.89	22 (.865)
A 7A30M141035	14	10	(.035)	35 (1.377)
A 7A30M141222	14	12	-	22 (.865)
A 7A30M141235	14	12	-	35 (1.377)
A 7A30M161022	16	10	1.27	22 (.865)
A 7A30M161035	16	10	(.050)	35 (1.377)
A 7A30M161222	16	12	0.89	22 (.865)
A 7A30M161235	16	12	(.035)	35 (1.377)
A 7A30M161422	16	14	-	22 (.865)
A 7A30M161435	16	14	-	35 (1.377)

NOTE: Dimensions in () are inch sizes.

> MATERIAL:

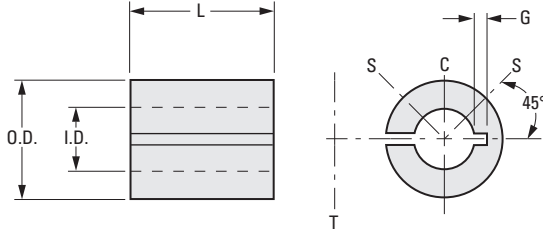
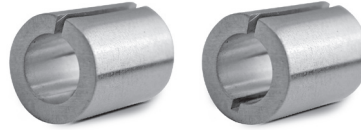
Aluminum or Brass where noted*

> INSTALLATION RECOMMENDATIONS:

- S = set screw positions in hub
- C = for single set screw fastening
- T = for tangential screw in clamp hub

> SPECIFICATIONS:

Bore reducers with thicker walls may have slot extending into opposite wall for additional flexibility. O.D. and I.D. tolerances are maintained before slitting.



INCH COMPONENT

Catalog Number	O.D. +.0005 -.0010 in.	I.D. +0.025 0 mm	G Groove Depth in.	L in. (mm)
A 7A30-250309	.2500	3	.025	.354 (9)
A 7A30-250312	.2500	3	.025	.472 (12)
A 7A30-250409	.2500	4	—	.354 (9)
A 7A30-250412	.2500	4	—	.472 (12)
A 7A30-250416	.2500	4	—	.625 (16)
A 7A30-250509	.2500	5	—	.354 (9)
A 7A30-250512	.2500	5	—	.472 (12)
A 7A30-250516	.2500	5	—	.625 (16)
A 7A30-250519	.2500	5	—	.750 (19)
* A 7B30-250609	.2500	6	—	.354 (9)
* A 7B30-250612	.2500	6	—	.472 (12)
* A 7B30-250616	.2500	6	—	.625 (16)
* A 7B30-250619	.2500	6	—	.750 (19)
* A 7B30-250622	.2500	6	—	.865 (22)
A 7A30-310609	.3125	6	—	.354 (9)
A 7A30-310612	.3125	6	—	.472 (12)
A 7A30-310616	.3125	6	—	.625 (16)
A 7A30-310619	.3125	6	—	.750 (19)
A 7A30-310622	.3125	6	—	.865 (22)
A 7A30-370512	.3750	5	.035	.472 (12)
A 7A30-370612	.3750	6	.035	.472 (12)
A 7A30-370616	.3750	6	.035	.625 (16)
A 7A30-370619	.3750	6	.035	.750 (19)
A 7A30-370622	.3750	6	.035	.865 (22)
A 7A30-370812	.3750	8	—	.472 (12)
A 7A30-370816	.3750	8	—	.625 (16)

Catalog Number	O.D. +.0005 -.0010 in.	I.D. +0.025 0 mm	G Groove Depth in.	L in. (mm)
A 7A30-370819	.3750	8	—	.750 (19)
A 7A30-370822	.3750	8	—	.865 (22)
A 7A30-500812	.5000	8	.035	.472 (12)
A 7A30-500816	.5000	8	.035	.625 (16)
A 7A30-500819	.5000	8	.035	.750 (19)
A 7A30-500822	.5000	8	.035	.865 (22)
A 7A30-501012	.5000	10	—	.472 (12)
A 7A30-501016	.5000	10	—	.625 (16)
A 7A30-501019	.5000	10	—	.750 (19)
A 7A30-501022	.5000	10	—	.865 (22)
A 7A30-501212	.5000	12	—	.472 (12)
A 7A30-501216	.5000	12	—	.625 (16)
A 7A30-501219	.5000	12	—	.750 (19)
A 7A30-501222	.5000	12	—	.865 (22)
A 7A30-621012	.6250	10	.035	.472 (12)
A 7A30-621016	.6250	10	.035	.625 (16)
A 7A30-621019	.6250	10	.035	.750 (19)
A 7A30-621022	.6250	10	.035	.865 (22)
A 7A30-621212	.6250	12	—	.472 (12)
A 7A30-621216	.6250	12	—	.625 (16)
A 7A30-621219	.6250	12	—	.750 (19)
A 7A30-621222	.6250	12	—	.865 (22)
A 7A30-621412	.6250	14	—	.472 (12)
A 7A30-621416	.6250	14	—	.625 (16)
A 7A30-621419	.6250	14	—	.750 (19)
A 7A30-621422	.6250	14	—	.865 (22)

NOTE: Dimensions in () are metric sizes.
* Brass

I
R
T
1
2
3
4
5
6
7
8
9
10
11
12
13
14
15
A