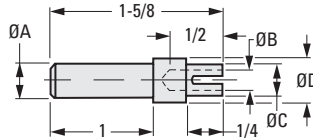
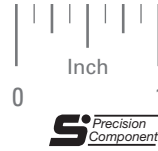
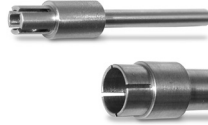


PRECISION SHAFT EXTENSIONS

PHONE: 516.328.3300 • FAX: 516.326.8827 • WWW.SDP-SI.COM

> MATERIAL:

303 Stainless Steel



INCH COMPONENT

Catalog Number	Shaft Size		A* Dia. +.0000 -.0002	B* Dia. +.0005 -.0000	C Dia.	D Dia.
	Male	Female				
S5200Y-125125	1/8	1/8	.1247	.1248	.188	.250
S5200Y-187187	3/16	3/16	.1872	.1873	.250	.312
S5200Y-250250	1/4	1/4	.2497	.2498	.312	.375
S5200Y-125187	1/8	3/16	.1247	.1873	.250	.312
S5200Y-125250		1/4		.2498	.312	.375
S5200Y-187250	3/16	1/8	.1872	.1248	.188	.250
S5200Y-187125		3/8		.3748	.437	.500
S5200Y-250125	1/4	1/4	.2497	.2498	.312	.375
S5200Y-250375		3/8		.3747	.437	.500
S5200Y-375250	3/8	1/4	.3747	.2498	.312	.375
S5200Y-375375		3/8		.3748	.437	.500

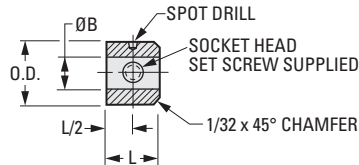
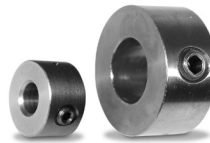
* Diameters concentric to within .005 T.I.R.

PRECISION SET SCREW COLLARS

> MATERIAL:

303 Stainless Steel

Other materials, sizes and passivation available on special order.



INCH COMPONENT

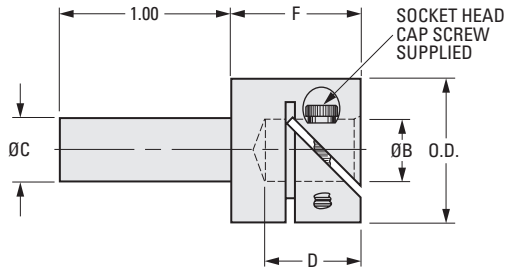
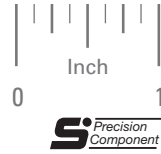
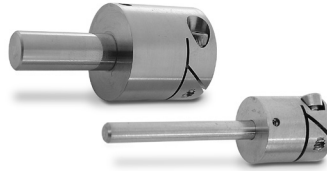
Catalog Number	Shaft Size	O.D.	B Bore +.0005 -.0000	L	Screw Size	Spot Drill
S5000Y-07807	5/64	7/32	.0779	.12	#0-80	#78
S5000Y-09408	3/32	1/4	.0935			
S5000Y-12010	.12	5/16	.1200	.18	#2-56	#69
S5000Y-12510	1/8		.1248			
S5000Y-15610	5/32	3/8	.1560	.22	#4-40	#60
S5000Y-18712	3/16		.1873			
S5000Y-24116	.24	1/2	.2405	.25	#6-32	#50
S5000Y-25016	1/4		.2498			
S5000Y-31218	5/16	9/16	.3123	.28	#10-32	#31
S5000Y-37524	3/8	3/4	.3748	.37		
S5000Y-50032	1/2	1	.4998	.50	1/4-20	#25

> MATERIAL:

303 Stainless Steel

PHONE: 516.328.3300 • FAX: 516.326.8827 • WWW.SDP-SI.COM

Fairloc® hubs require controlled shaft tolerances. Suggested clearance fit between the bore and shaft is .0001/.0008.



INCH COMPONENT

Catalog Number	Shaft Size		O.D.	B Bore +.0005 -.0000	C Dia. +.0000 -.0002	D	F	Screw Size	Cap Screw Clear. Radius			
	Female	Male										
S52FCY-120125	.120	1/8	.437	.1200	.1247	.375	1/2	#2-56	.273			
S52FCY-120187		3/16			.1872							
S52FCY-125125	1/8	.1247										
S52FCY-125187	3/16	.1872										
S52FCY-125250	1/4	.2497		.325								
S52FCY-187125	1/8	.1247		.375								
S52FCY-187187	3/16	.1872		.325								
S52FCY-187250	1/4	.2497		.375								
S52FCY-241187	3/16	.1872	.530	.2405	.1872	.375	1/2	#2-56	.315			
S52FCY-241250	1/4	.2497										
S52FCY-241375	3/8	.3747										
S52FCY-250125	1/8	.1247										
S52FCY-250187	3/16	.1872	.2498	.2498	.2497							
S52FCY-250250	1/4	.3747										
S52FCY-250375	3/8	.563	.870	.3748	.4997					3/4	#6-32	.495
S52FCY-375250	1/4	.2497										
S52FCY-375375	3/8	.563	1.000	.4998	.3747	1	#6-32	.552				
S52FCY-375500	1/2	.750			.4997							
S52FCY-500375	3/8	.563	1.000	.4998	.3747	1	#6-32	.552				
S52FCY-500500	1/2	.750			.4997							



SHAFT REDUCERS & EXTENDERS

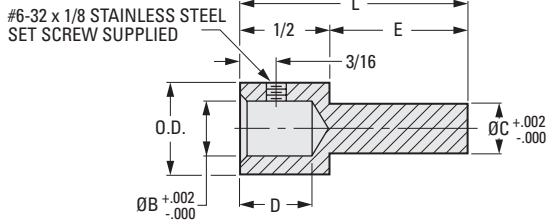


> MATERIAL:

303 Stainless Steel

PHONE: 516.328.3300 • FAX: 516.326.8827 • WWW.SDP-SI.COM

Other bore sizes and finishes available on special order.



INCH COMPONENT

Catalog Number	O.D.	B Bore	C Dia.	D	E	L								
A 7X 3-0808A	1/2	1/4	1/4	7/16	5/8	1-1/8								
A 7X 3-0808B					1-1/4	1-3/4								
A 7X 3-0808C				5/8	1-1/8									
A 7X 3-0808D				1-1/4	1-3/4									
A 7X 3-0810A			1/2	1/4	5/16	7/16	5/8	1-1/8						
A 7X 3-0810B							1-1/4	1-3/4						
A 7X 3-0810C						5/8	1-1/8							
A 7X 3-0810D						1-1/4	1-3/4							
A 7X 3-0812A					1/2	1/4	3/8	7/16	5/8	1-1/8				
A 7X 3-0812B									1-1/4	1-3/4				
A 7X 3-0812C								5/8	1-1/8					
A 7X 3-0812D								1-1/4	1-3/4					
A 7X 3-0814A							1/2	1/4	7/16	7/16	5/8	1-1/8		
A 7X 3-0814B											1-1/4	1-3/4		
A 7X 3-0814C										5/8	1-1/8			
A 7X 3-0814D										1-1/4	1-3/4			
A 7X 3-0816A									1/2	1/4	1/2	7/16	5/8	1-1/8
A 7X 3-0816B													1-1/4	1-3/4
A 7X 3-0816C												5/8	1-1/8	
A 7X 3-0816D												1-1/4	1-3/4	
A 7X 3-1208A	9/16	3/8									1/4	7/16	5/8	1-1/8
A 7X 3-1208B													1-1/4	1-3/4
A 7X 3-1208C												5/8	1-1/8	
A 7X 3-1208D												1-1/4	1-3/4	
A 7X 3-1210A			9/16	3/8							5/16	7/16	5/8	1-1/8
A 7X 3-1210B													1-1/4	1-3/4
A 7X 3-1210C												5/8	1-1/8	
A 7X 3-1210D												1-1/4	1-3/4	
A 7X 3-1212A					9/16	3/8					3/8	7/16	5/8	1-1/8
A 7X 3-1212B													1-1/4	1-3/4
A 7X 3-1212C												5/8	1-1/8	
A 7X 3-1212D												1-1/4	1-3/4	
A 7X 3-1214A							9/16	3/8			7/16	7/16	5/8	1-1/8
A 7X 3-1214B													1-1/4	1-3/4
A 7X 3-1214C												5/8	1-1/8	
A 7X 3-1214D												1-1/4	1-3/4	
A 7X 3-1216A									9/16	3/8	1/2	7/16	5/8	1-1/8
A 7X 3-1216B													1-1/4	1-3/4
A 7X 3-1216C												5/8	1-1/8	
A 7X 3-1216D												1-1/4	1-3/4	

