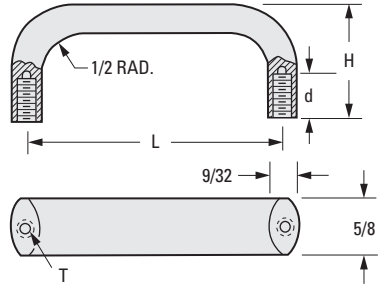
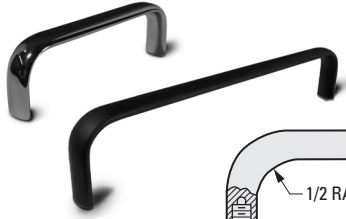


OVAL HANDLES

PHONE: 516.328.3300 • FAX: 516.326.8827 • WWW.SDP-SI.COM

MATERIAL:

Aluminum, Black Anodized or Brass, Nickel Plated



INCH COMPONENT

Catalog Number	H Height	L Length	T Thread	d Thread Depth
Aluminum, Black Anodized				
A 9A45-A30	1-9/32	3	#10-24	3/8
A 9A45-A46	1-1/2	4-9/16	#10-24	1/2
A 9A45-A64	1-3/4	6-7/16	#10-24	5/8
A 9A45-A90	1-3/4	9	#10-24	5/8
Brass, Nickel Plated				
A 9B45-A30	1-9/32	3	#10-32	3/8
A 9B45-A46	1-1/2	4-9/16	#10-32	1/2
A 9B45-A64	1-3/4	6-7/16	#10-32	1/2
A 9B45-A90	1-3/4	9	#10-32	1/2

CHASSIS HANDLES

FOLDING TYPE

MATERIAL:

Brass

FINISH:

Nickel Plated or Black Oxide

Nuts and washers are supplied, and come in various materials.

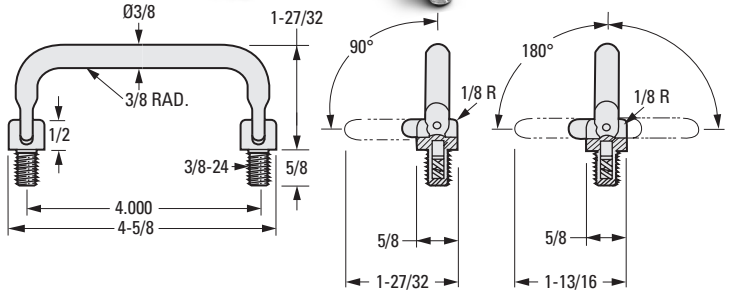


Fig. 1

Fig. 2

INCH COMPONENT

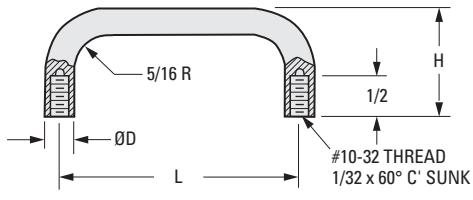
Catalog Number	Fig. No.	Finish
A 9B47-A15N	1	Nickel Plated
A 9B47-A15BL	1	Black Oxide
A 9B47-A15N18	2	Nickel Plated

ROUND HANDLES

PHONE: 516.328.3300 • FAX: 516.326.8827 • WWW.SDP-SI.COM

> MATERIAL:

Brass, Nickel Plated,
Stainless Steel or
Aluminum, Black Anodized



INCH COMPONENT

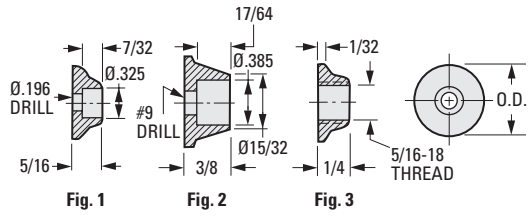
Catalog Number	H Height	L Length	D Dia.
Brass, Nickel Plated			
A 9B44-A3010	1-5/16	3	5/16
A 9B44-A4210	1-1/2	4-1/4	5/16
A 9B44-A4610	1-1/2	4-9/16	5/16
A 9B44-A6510	1-3/4	6-1/2	5/16
Stainless Steel			
A 9Y44-A30	1-5/16	3	5/16
A 9Y44-A30H	1-1/2	3	5/16
A 9Y44-A42	1-1/2	4-1/4	5/16
A 9Y44-A45	1-1/2	4-1/2	5/16
A 9Y44-A60	1-1/2	6	5/16
A 9Y44-A65	1-3/4	6-1/2	5/16
Aluminum, Black Anodized			
A 9A44-A30	1-1/2	3	5/16
*A 9A44-A40	1-7/8	4	3/8
A 9A44-A46	1-1/2	4-9/16	5/16

* Catalog number: A 9A44-A40 has an internal radius of 3/8".

END FERRULES

> MATERIAL:

Brass, Nickel Plated,
Aluminum, Black Anodized or
Stainless Steel



INCH COMPONENT

Catalog Number	Material	O.D.
Fig. 1		
A 9B44-A	Brass, Nickel Plated	3/4
A 9A44-A	Aluminum, Black Anodized	3/4
A 9Y44-A	Stainless Steel	3/4
Fig. 2		
A 9A44-AAA	Aluminum, Black Anodized	3/4
A 9B44-AAA	Brass, Nickel Plated	3/4
Fig. 3		
A 9B44-ATH	Brass, Nickel Plated	5/8