

SPLIT TYPE HUB
STAINLESS STEEL
ZERO BACKLASH

PHONE: 516.328.3300 • FAX: 516.326.8827 • WWW.SDP-SI.COM

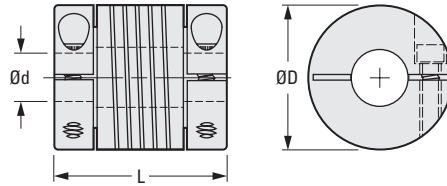
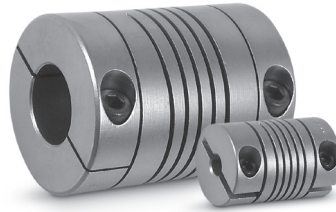


> MATERIAL:
17-4PH Stainless Steel

> MISALIGNMENT COMPENSATION:
Max. Angular Offset: 5°
Max. Lateral Offset: 0.25
Max. Axial Motion: ± 0.25

> FEATURES:
One-Piece Construction.
Integral Clamp.
Shaft Relief.
High Fatigue Resistance.
Constant Velocity.
Adapts to High- and Low-Speed Applications.

Bore diameter combinations are available on special order.



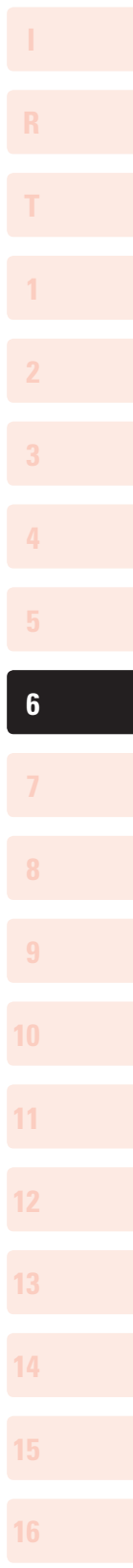
The projections shown are per ISO convention.

METRIC COMPONENT

Catalog Number	d Bore +0.05 0	D Dia.	L Length ± 0.25	Screw Size	Momentary* Dynamic Torque N • m	Torsional Flexibility Arc Min./ N • m	Inertia** x 10 ⁻⁴ kg cm sec. ²
S50HWWW15H0303	3	15	22	M2	1.4	114	0.078
S50HWWW15H0404	4				1.3	156	
S50HWWW15H0505	5	20	28	M3	1.2	222	0.32
S50HWWW20H0404	4				2.6	59.4	
S50HWWW20H0505	5				2.5	78	
S50HWWW20H0606	6				2.3	96	
S50HWWW25H0606	6	25	30	M3	5.7	32.4	0.84
S50HWWW25H0707	7				5.5	39.6	
S50HWWW25H0808	8				5.1	49.2	
S50HWWW25H0909	9				4.7	60	
S50HWWW25H1010	10				4.3	78	
S50HWWW30H0909	9	30	38	M4	9.5	24	2.2
S50HWWW30H1010	10				8.9	28.8	
S50HWWW30H1111	11				8.3	34.8	
S50HWWW30H1212	12				7.7	42	

* Torque listed is maximum momentary value:
For NONREVERSING applications, the torque rating is 1/2.
For REVERSING applications, the torque rating is 1/4.

** Inertia is based on the smallest standard bore diameter.



SPLIT TYPE HUB
ALUMINUM
ZERO BACKLASH

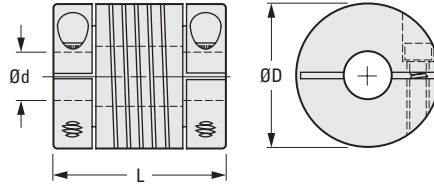
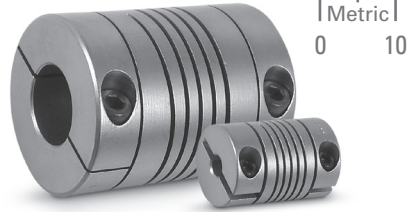
PHONE: 516.328.3300 • FAX: 516.326.8827 • WWW.SDP-SI.COM

› **MATERIAL:**
7075-T6 Aluminum

› **MISALIGNMENT COMPENSATION:**
Max. Angular Offset: 5°
Max. Lateral Offset: 0.25
Max. Axial Motion: ± 0.25

› **FEATURES:**
One-Piece Construction
Integral Clamp
Shaft Relief
High Fatigue Resistance
Constant Velocity
Adapts to High- and Low-Speed Applications

Bore diameter combinations are available on special order.



The projections shown are per ISO convention.

METRIC COMPONENT

Catalog Number	d Bore +0.05 0	D Dia.	L Length ± 0.25	Screw Size	Momentary* Dynamic Torque N • m	Torsional Flexibility Arc Min./ N • m	Inertia Δ x 10 ⁻⁴ kg cm sec. ²
S50HAWM15H0303	3	15	22	M2	0.71	306	0.028
S50HAWM15H0404	4				0.66	432	
S50HAWM15H0505	5				0.59	600	
S50HAWM20H0404	4	20	28	M3	1.3	162	0.11
S50HAWM20H0505	5				1.2	210	
S50HAWM20H0606	6				1.1	270	
S50HAWM25H0606	6	25	30	M3	2.9	90	0.3
S50HAWM25H0707	7				2.8	108	
S50HAWM25H0808	8				2.6	132	
S50HAWM25H0909	9				2.4	168	
S50HAWM25H1010	10				2.2	210	
S50HAWM30H0909	9				4.9	66	
S50HAWM30H1010	10	4.6	78				
S50HAWM30H1111	11	4.3	96				
S50HAWM30H1212	12	4	114				

* Torque listed is maximum momentary value.
For NONREVERSING applications, the torque rating is 1/2.
For REVERSING applications, the torque rating is 1/4.
Δ Inertia is based on the smallest standard bore diameter.

I
R
T
1
2
3
4
5
6
7
8
9
10
11
12
13
14
15
A

SET SCREW TYPE
STAINLESS STEEL
ZERO BACKLASH

PHONE: 516.328.3300 • FAX: 516.326.8827 • WWW.SDP-SI.COM



> MATERIAL:

17-4PH Stainless Steel

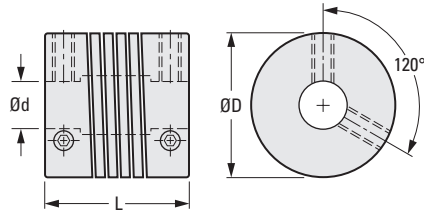
> MISALIGNMENT COMPENSATION:

Max. Angular Offset: 5°
Max. Lateral Offset: 0.25
Max. Axial Motion: ± 0.25

> FEATURES:

One-Piece Construction
Shaft Relief
High Fatigue Resistance
Constant Velocity
Adapts to High- and Low-Speed Applications

Bore diameter combinations are available on special order.



The projections shown are per ISO convention.

METRIC COMPONENT

Catalog Number	d Bore +0.05 0	D Dia.	L Length ± 0.25	Screw Size	Momentary* Dynamic Torque N • m	Torsional Flexibility Arc Min/ N • m	Inertia ** x 10 ⁻⁴ kg cm sec. ²
S50HWWW15P0303	3	15	20	M2.5	1.4	114	0.07
S50HWWW15P0404	4			M3	1.3	156	
S50HWWW15P0505	5				1.2	222	
S50HWWW20P0404	4	20	20	M3	2.6	59.4	0.22
S50HWWW20P0505	5				2.5	78	
S50HWWW20P0606	6				2.3	96	
S50HWWW25P0606	6	25	24	M4	5.7	32.4	0.66
S50HWWW25P0707	7				5.5	39.6	
S50HWWW25P0808	8				5.1	49.2	
S50HWWW25P0909	9	30	30	M5	4.7	60	1.7
S50HWWW25P1010	10				4.3	78	
S50HWWW30P0909	9				9.5	24	
S50HWWW30P1010	10	30	30	M5	8.9	28.8	1.7
S50HWWW30P1111	11				8.3	34.8	
S50HWWW30P1212	12				7.7	42	

* Torque listed is maximum momentary value:

For NONREVERSING applications, the torque rating is 1/2.

For REVERSING applications, the torque rating is 1/4.

** Inertia is based on the smallest standard bore diameter.

SET SCREW TYPE
ALUMINUM
ZERO BACKLASH

PHONE: 516.328.3300 • FAX: 516.326.8827 • WWW.SDP-SI.COM

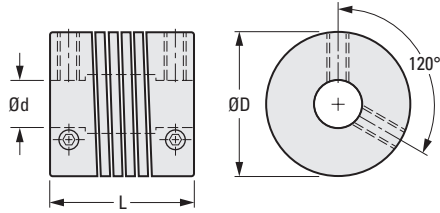


› **MATERIAL:**
7075-T6 Aluminum

› **MISALIGNMENT COMPENSATION:**
Max. Angular Offset: 5°
Max. Lateral Offset: 0.25
Max. Axial Motion: ± 0.25

› **FEATURES:**
One-Piece Construction
Shaft Relief
High Fatigue Resistance
Constant Velocity
Adapts to High- and Low-Speed Applications

Bore diameter combinations are available on special order.



The projections shown are per ISO convention.

METRIC COMPONENT

Catalog Number	d Bore +0.05 0	D Dia.	L Length ± 0.25	Screw Size	Momentary* Dynamic Torque N • m	Torsional Flexibility Arc Min./ N • m	Inertia Δ $\times 10^{-4}$ kg cm sec. ²
S50HAWM15P0303	3	15	20	M2.5	0.71	306	0.025
S50HAWM15P0404	4				0.66	432	
S50HAWM15P0505	5				0.59	600	
S50HAWM20P0404	4	20	20	M3	1.3	162	0.079
S50HAWM20P0505	5				1.2	210	
S50HAWM20P0606	6				1.1	270	
S50HAWM25P0606	6	25	24	M4	2.9	90	0.24
S50HAWM25P0707	7				2.8	108	
S50HAWM25P0808	8				2.6	132	
S50HAWM25P0909	9	30	30	M5	2.4	168	0.6
S50HAWM25P1010	10				2.2	210	
S50HAWM30P0909	9				4.9	66	
S50HAWM30P1010	10	30	30	M5	4.6	78	0.6
S50HAWM30P1111	11				4.3	96	
S50HAWM30P1212	12				4	114	

* Torque listed is maximum momentary value.

For NONREVERSING applications, the torque rating is 1/2.

For REVERSING applications, the torque rating is 1/4.

Δ Inertia is based on the smallest standard bore diameter.

MINIATURE HELICAL COUPLINGS

SDP/SI

ZERO BACKLASH
LIGHTWEIGHT

PHONE: 516.328.3300 • FAX: 516.326.8827 • WWW.SDP-SI.COM



> MATERIAL:

7075-T651 Aluminum

> MISALIGNMENT COMPENSATION:

Max. Angular Offset: 3°

Max. Lateral Offset: See table below

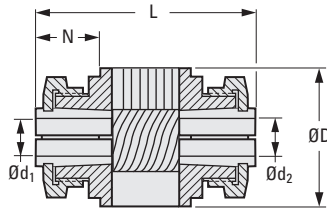
> MAX. OPERATING SPEED:

5000 rpm



Service Factor	
Shock & Reversing	2
Nonreversing	1.5
Steady Load	1

*Select the size so that
(Application Torque) x (Service Factor)
is less than the allowable maximum torque



> SPECIFICATION:

d₁, d₂ Tolerance:

4 to 6 mm +0.012/0

8 & 10 mm +0.015/0

12 mm +0.018/0

METRIC COMPONENT

Catalog Number	D Dia.	d ₁ Bore H7	d ₂ Bore H7	N	L	Max. Lateral Offset	Max.* Torque N • m	Torsional Stiffness N • m/rad	Approx. Weight grams
S54MHCM190404	19.1	4	4	8	28	0.08	4	90	22
S54MHCM190405		4	5						
S54MHCM190406		4	6						
S54MHCM190408		4	8						
S54MHCM190505		5	5						
S54MHCM190506		5	6						
S54MHCM190508		5	8						
S54MHCM190606		6	6						
S54MHCM190608		6	8						
S54MHCM190808		8	8						
S54MHCM250505	25.4	5	5	11	40	0.10	8	130	30
S54MHCM250506		5	6						
S54MHCM250508		5	8						
S54MHCM250510		5	10						
S54MHCM250606		6	6						
S54MHCM250608		6	8						
S54MHCM250610		6	10						
S54MHCM250808		8	8						
S54MHCM250810		8	10						
S54MHCM251010		10	10						
S54MHCM310606	31.8	6	6	16	58	0.15	14	200	60
S54MHCM310608		6	8						
S54MHCM310610		6	10						
S54MHCM310612		6	12						
S54MHCM310808		8	8						
S54MHCM310810		8	10						
S54MHCM310812		8	12						
S54MHCM311010		10	10						
S54MHCM311012		10	12						
S54MHCM311212		12	12						

PATENT NO. 3,068,666

PHONE: 516.328.3300 • FAX: 516.326.8827 • WWW.SDP-SI.COM

> MATERIAL:

303 Stainless Steel

> MISALIGNMENT COMPENSATION:

Max. Angular Offset: 5°
Max. Lateral Offset: 0.075
Max. Axial Motion: 0

> FEATURES:

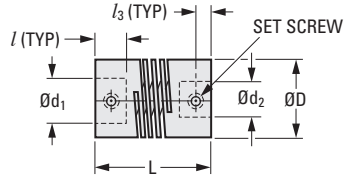
One-Piece Construction
 Constant Velocity
 Adapts to High- and Low-Speed Applications

> SPECIFICATIONS:

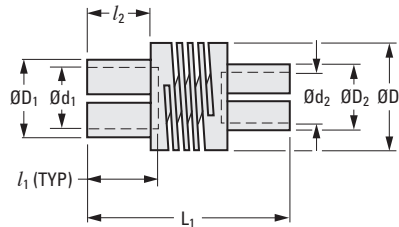
d₁, d₂ Tolerance:
 2 & 3 mm +0.010/0
 4, 5 & 6 mm +0.012/0

D₁, D₂ Dia. Tolerance:
 3.6, 4.6 & 5.6 mm 0/-0.018
 6.6 & 7.6 mm 0/-0.022

Other sizes and bores available on special order.



Set Screw Type



Clamp Type

METRIC COMPONENT

Catalog Number		d ₁ Bore H7	d ₂ Bore H7	D ₁ Dia. h8	D ₂ Dia. h8	D Dia.	Working Torque N • m	Torsional Flexibility Arc Sec./ N • m
Set Screw Type	Clamp Type							
S50HS9M1P02P02	S50HS9M1C02C02	2	2	3.6	3.6	6.35	0.14	18.9
S50HS9M1P02P03	S50HS9M1C02C03		3		4.6			
S50HS9M1P03P03	S50HS9M1C03C03	3	3	4.6	4.6	12.7	0.56	3.5
S50HS9M2P03P03	S50HS9M2C03C03		3		4.6			
S50HS9M2P03P04	S50HS9M2C03C04	3	4	4.6	5.6	12.7	0.56	3.5
S50HS9M2P03P05	S50HS9M2C03C05		5		6.6			
S50HS9M2P03P06	S50HS9M2C03C06	3	6	4.6	7.6	12.7	0.56	3.5
S50HS9M2P04P04	S50HS9M2C04C04		4		5.6			
S50HS9M2P04P05	S50HS9M2C04C05	4	5	5.6	6.6	12.7	0.56	3.5
S50HS9M2P04P06	S50HS9M2C04C06		6		7.6			
S50HS9M2P05P05	S50HS9M2C05C05	5	5	6.6	6.6	12.7	0.56	3.5
S50HS9M2P05P06	S50HS9M2C05C06		6		7.6			
S50HS9M2P06P06	S50HS9M2C06C06	6	6	7.6	7.6	12.7	0.56	3.5

Coupling Series (Ref. Only)

Set Screw Type	Clamp Type	l	L	l ₁	l ₂	l ₃	L ₁	Set Screw
S50HS9M1P...	S50HS9M1C...	3	10	3	3	1.6	10	M2
S50HS9M2P...	S50HS9M2C...	6	20	8	7	2.4	24	M3