

> CAUTION:

Be prepared for strong magnetic attraction between the magnet hubs.

PHONE: 516.328.3300 • FAX: 516.326.8827 • WWW.SDP-SI.COM

> MATERIAL:

- Hub - 416 Stainless Steel
- Set Screw - Stainless Steel
- Magnet - NdFeB, Nickel Plated

> MISALIGNMENT COMPENSATION:

- Max. Angular Offset: 3°
- Max. Parallel Offset: .25

> SPECIFICATIONS:

- Air Gap*
- Catalog Numbers
- S50DCM-10: .125
- S50DCM-17: .188
- S50DCM-20: .188

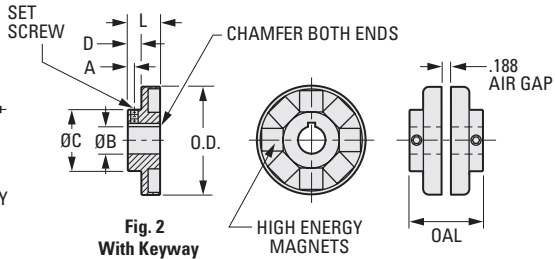
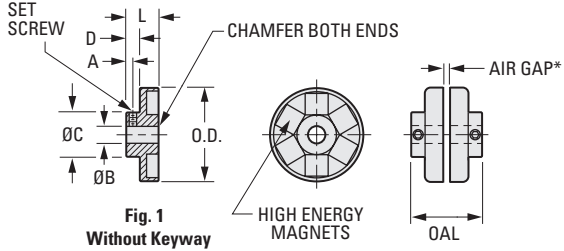
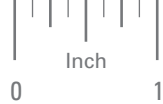
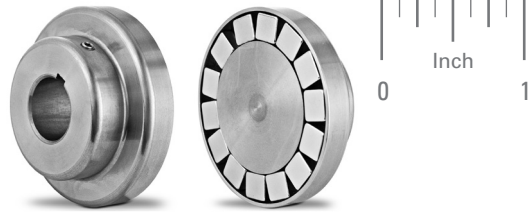
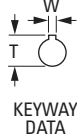
> MAX. OPERATING TEMPERATURE:

+284°F

> TO MAKE COUPLING:

Select two hub halves with the same O.D. from the table below.

Priced Per Hub Half

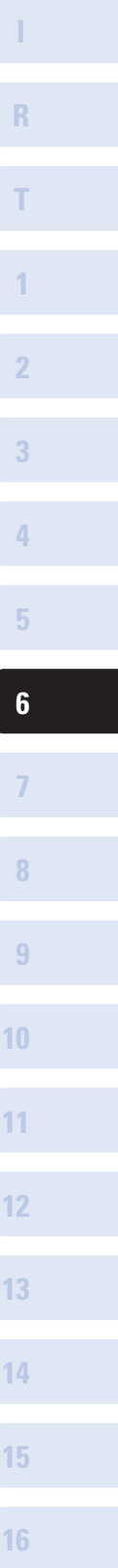


Bore	.500
W Width (+.002/-0.000)	.1250
T Height (+.010/-0.000)	.560

INCH COMPONENT

Catalog Number	Fig. No.	O.D.	B Bore +.001 -0.000	L	C Hub Dia.	D Hub Length	A	Set Screw	No. of Magnets
S50DCM-10	1	1.06	Solid	.63	.81	.25	.12	—	6
S50DCM-10H02	1	1.06	.125	.63	.81	.25	.12	#4-40	6
S50DCM-10H03	1	1.06	.1875	.63	.81	.25	.12	#8-32	6
S50DCM-10H04	1	1.06	.250	.63	.81	.25	.12	#8-32	6
S50DCM-10H05	1	1.06	.3125	.63	.81	.25	.12	#8-32	6
S50DCM-17	1	1.72	Solid	.59	.81	.25	.12	—	6
S50DCM-17H03	1	1.72	.1875	.59	.81	.25	.12	#8-32	6
S50DCM-17H04	1	1.72	.250	.59	.81	.25	.12	#8-32	6
S50DCM-17H05	1	1.72	.3125	.59	.81	.25	.12	#8-32	6
S50DCM-20	1	1.97	Solid	.59	1.12	.25	.12	—	8
S50DCM-20H04	1	1.97	.250	.59	1.12	.25	.12	#10-32	8
S50DCM-20H05	1	1.97	.3125	.59	1.12	.25	.12	#10-32	8
S50DCM-20H06	1	1.97	.375	.59	1.12	.25	.12	#10-32	8
S50DCM-20H08	2	1.97	.500	.59	1.12	.25	.12	#10-32	8

Coupling Series (Ref. Only)	OAL	Torque lbf in.	Breakaway Torque lbf in.	Max. rpm	hp @ 1750 rpm	Max. Weight lb.
S50DCM-10...	1.37	1	1.4	42500	.03	.22
S50DCM-17...	1.37	4	5	26000	.08	.50
S50DCM-20...	1.37	6	8	23000	.17	.60



> CAUTION:

Be prepared for strong magnetic attraction between the magnet hubs.

PHONE: 516.328.3300 • FAX: 516.326.8827 • WWW.SDP-SI.COM

> MATERIAL:

- Hub - 416 Stainless Steel
- Set Screw - Stainless Steel
- Magnet - NdFeB, Nickel Plated

> MISALIGNMENT COMPENSATION:

- Max. Angular Offset: 3°
- Max. Parallel Offset: .25

> MAX. OPERATING TEMPERATURE:

+284°F

> TO MAKE COUPLING:

Select two hub halves with the same O.D. from the table below.

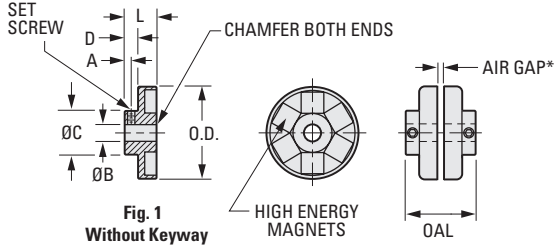
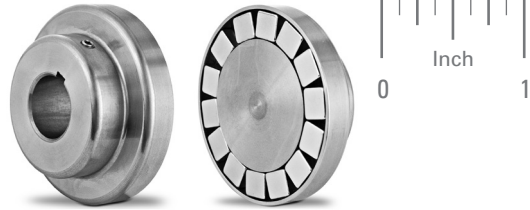


Fig. 1 Without Keyway

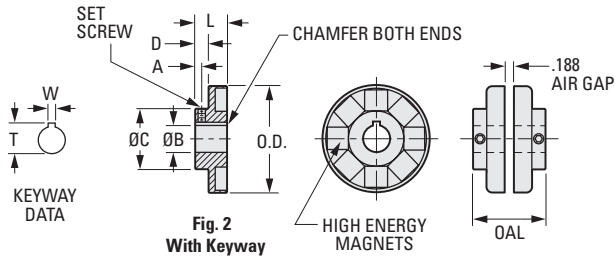


Fig. 2 With Keyway

Fig. 2 Keyway Dimensions

	.500	.625	.750	.875	1.000
Bore	.500	.625	.750	.875	1.000
W Width (+.002/- .000)	.1250	.1875	.1875	.1875	.2500
T Height (+.010/- .000)	.560	.709	.837	.964	1.114

INCH COMPONENT

Catalog Number	Fig. No.	O.D.	B Bore +.001 -.000	L	C Hub Dia.	D Hub Length	A	Set Screw	No. of Magnets
S50DCM-24	1	2.36	Solid	.75	1.50	.35	.16	—	10
S50DCM-24H06	1	2.36	.375	.75	1.50	.35	.16	#10-32	10
S50DCM-24H08	2	2.36	.500	.75	1.50	.35	.16	#10-32	10
S50DCM-24H10	2	2.36	.625	.75	1.50	.35	.16	#10-32	10
S50DCM-24H12	2	2.36	.750	.75	1.50	.35	.16	#10-32	10
S50DCM-29	1	2.86	Solid	1.00	2.00	.53	.28	—	14
S50DCM-29H08	2	2.86	.500	1.00	2.00	.53	.28	#10-32	14
S50DCM-29H10	2	2.86	.625	1.00	2.00	.53	.28	#10-32	14
S50DCM-29H12	2	2.86	.750	1.00	2.00	.53	.28	#10-32	14
S50DCM-29H14	2	2.86	.875	1.00	2.00	.53	.28	#10-32	14
S50DCM-29H16	2	2.86	1.000	1.00	2.00	.53	.28	1/4-20	14

Specifications for Two Hub Halves

Coupling Series (Ref. Only)	OAL	Torque lbf in.	Breakaway Torque lbf in.	Max. rpm	hp @ 1750 rpm	Max. Weight lb.
S50DCM-24...	1.69	9	12	19000	.25	1.2
S50DCM-29...	2.19	15	20	16000	.43	2.5

Continued from previous page