

CLAMP TYPE  
PIN TYPE  
PAT. NO. 3,404,545

PHONE: 516.328.3300 • FAX: 516.326.8827 • WWW.SDP-SI.COM

› **MATERIAL:**  
303 Stainless Steel

› **MISALIGNMENT COMPENSATION:**  
Max. Angular Offset: 1-1/2°  
Max. Lateral Offset: .015 in.

› **SPECIFICATIONS:**  
Max. Backlash: 5 min.  
Max. Operating Speed: 3000 rpm  
Max. Torque: Standard Series: 600 ozf in.  
Miniature Series: 400 ozf in.  
Center block spring-loaded.  
Stainless Steel socket head set screws  
supplied with Pin Type.

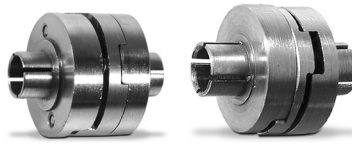


Fig. 1 Clamp Type



Fig. 2 Pin Type

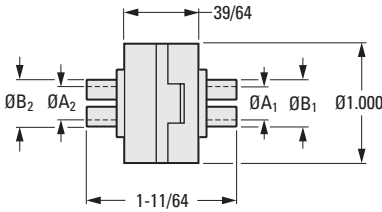


Fig. 1 Clamp Type  
Standard Series

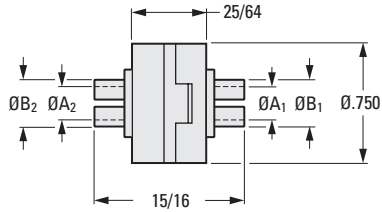


Fig. 1 Clamp Type  
Miniature Series

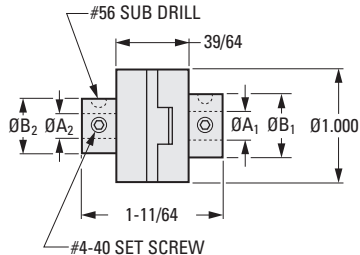


Fig. 2 Pin Type  
Standard Series

INCH COMPONENT		A <sub>1</sub> Bore +.0005 -.0000	B <sub>1</sub> Dia. +.000 -.003	A <sub>2</sub> Bore +.0005 -.0000	B <sub>2</sub> Dia. +.000 -.003
Catalog Number *					
Standard	Miniature				
<b>Fig. 1 Clamp Type</b>					
—	S9911A-G407-03	.1873	.250	.1873	.250
S9911A-G400-4	S9911A-G407-04	.2498	.313	.2498	.313
<b>Fig. 2 Pin Type</b>					
S9911A-G401-5	—	.3123	9/16	.3123	9/16

\* To be discontinued when present stock is depleted.

I  
R  
T  
1  
2  
3  
4  
5  
6  
7  
8  
9  
10  
11  
12  
13  
14  
15  
16