

SPLIT TYPE HUB

PHONE: 516.328.3300 • FAX: 516.326.8827 • WWW.SDP-SI.COM



> MATERIAL:

Hubs - Aluminum, Clear Anodized
Torque Disc - Acetal

> OPERATING TEMPERATURE:

-40°C to +85°C

> FEATURES:

Easy Assembly.
 Lubrication-Free.
 Low Inertia.
 Corrosion-Resistant.
 Electrical Isolation.

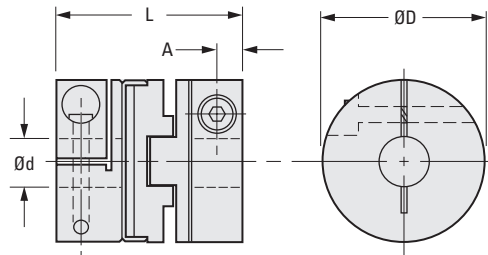
> MAX. SERVICE TORQUE:

0.75 N•m for 15 series
 1.69 N•m for 19 series
 3.95 N•m for 25 series
 9.04 N•m for 33 series

> BUILD YOUR OWN COUPLING:

For Different Bore Combinations: Select hubs and corresponding disc within the same series.
For Hubs with the Same Bore: Select the "Complete Coupling"

Set Screw & Split Hubs can be interchanged if discs from the same size O.D. are selected.



The projections shown are per ISO convention.

METRIC COMPONENT

Catalog Number			D Dia.	d Bore +0.030 0	L Length	Max. Shaft Depth	Cap Screw	Max. Angular Offset	Max. Lateral Offset	A
Complete Coupling	Hub Only	Disc Only								
A 5Z15M331503	A 5A15M331503	A 5P15M3315	15	3	25.9	8.1	M2	1/2°	0.1	2.4
A 5Z15M331504	A 5A15M331504			4						
A 5Z15M331506	A 5A15M331506			6						
A 5Z15M331903	A 5A15M331903	A 5P15M3319	19.1	3	22	6.3	M2.5	1/2°	0.2	2.4
A 5Z15M331904	A 5A15M331904			4						
A 5Z15M331906	A 5A15M331906			6						
A 5Z15M332506	A 5A15M332506	A 5P15M3325	25.4	6	28.4	8.6	M3	1/2°	0.2	3.2
A 5Z15M332508	A 5A15M332508			8						
A 5Z15M332510	A 5A15M332510			10						
A 5Z15M333308	A 5A15M333308	A 5P15M3333	33.3	8	48	13	M3	1/2°	0.2	3.2
A 5Z15M333310	A 5A15M333310			10						
A 5Z15M333312	A 5A15M333312			12						

SET SCREW HUB

PHONE: 516.328.3300 • FAX: 516.326.8827 • WWW.SDP-SI.COM

> MATERIAL:

Hubs - 06, 09 & 13 Series - Brass, Bright Dip
 15 Thru 41 Series - Aluminum, Clear Anodized
 Torque Disc - Acetal

> OPERATING TEMPERATURE:

-40°C to +85°C

> FEATURES:

Easy Assembly.
 Lubrication-Free.
 Low Inertia.
 Corrosion-Resistant.
 Electrical Isolation.

> MAX. SERVICE TORQUE:

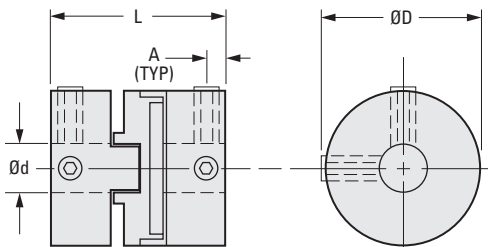
0.06 N • m for 06 series
 0.2 N • m for 09 series
 0.49 N • m for 13 series
 0.75 N • m for 15 series
 1.69 N • m for 19 series
 3.95 N • m for 25 series
 9.04 N • m for 33 series
 16.94 N • m for 41 series

> BUILD YOUR OWN COUPLING:

For Different Bore Combinations: Select hubs and corresponding disc within the same series.

For Hubs with the Same Bore: Select the "Complete Coupling"

Set Screw & Split Hubs can be interchanged if discs from the same size O.D. are selected.



METRIC COMPONENT			ØD	d Bore +0.030 0	L Length	Max. Shaft Depth	Set Screw	Max. Angular Offset	Max. Lateral Offset	A	
Catalog Number											
Complete Coupling	Hub Only	Disc Only									
A 5Z15M000602 A 5Z15M000603	A 5B15M000602 A 5B15M000603	A 5P15M0006	6.4	$\frac{2}{3}$	12.7	3.8	M3*	1/2°	0.1	1.9	
A 5Z15M000903 A 5Z15M000904	A 5B15M000903 A 5B15M000904	A 5P15M0009	9.5	$\frac{3}{4}$	12.7	3.8	M3*	1/2°	0.1	1.9	
A 5Z15M001304 A 5Z15M001306	A 5B15M001304 A 5B15M001306	A 5P15M0013	12.7	$\frac{4}{6}$	15.9	4.3	M3	1/2°	0.1	2.4	
A 5Z15M001504 A 5Z15M001506	A 5A15M001504 A 5A15M001506	A 5P15M0015	15	$\frac{4}{6}$	25.9	8.1	M3	1/2°	0.1	2.4	
A 5Z15M001906 A 5Z15M001908	A 5A15M001906 A 5A15M001908	A 5P15M0019	19.1	$\frac{6}{8}$	22	6.3	M3	1/2°	0.2	2.4	
A 5Z15M002508 A 5Z15M002510	A 5A15M002508 A 5A15M002510	A 5P15M0025	25.4	$\frac{8}{10}$	28.4	8.6	M4	1/2°	0.2	3.2	
A 5Z15M003310 A 5Z15M003312	A 5A15M003310 A 5A15M003312	A 5P15M0033	33.3	$\frac{10}{12}$	48	13	M4	1/2°	0.2	3.2	
A 5Z15M004110 A 5Z15M004112	A 5A15M004110 A 5A15M004112	A 5P15M0041	41.1	$\frac{10}{12}$	50.8	16.7	M5	1/2°	0.25	4.4	

*06 & 09 series have only one set screw at each end.