

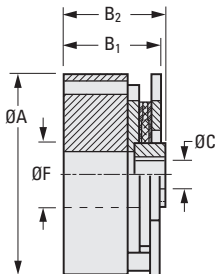
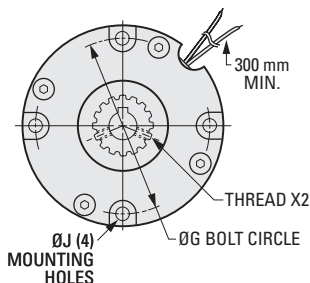
SIMPLE INSTALLATION
ECONOMICAL COST
ENERGY EFFICIENT

PHONE: 516.328.3300 • FAX: 516.326.8827 • WWW.SDP-SI.COM



> COIL DATA:

Voltage: 24V DC



The projections shown are per ISO convention.

Keyway Dimensions

| Bore | 6 | 8 | 10 | 12 | 16 |
|--------|---|-----|------|------|------|
| Width | 2 | 3 | 3 | 4 | 5 |
| Height | 7 | 9.4 | 11.4 | 13.8 | 18.3 |

METRIC COMPONENT

| Catalog Number | Static Torque N•m | Max. Watts | C Bore | F Case Inside Dia. | A Dia. | G | J | B ₁ OAL Short Hub | B ₂ OAL Long Hub |
|----------------|-------------------|------------|--------|--------------------|--------|------|-----|------------------------------|-----------------------------|
| S90SB9M15A06S | 0.56 | 7 | 6 | 13.5 | 38.1 | 33.3 | 3.2 | 26.9 | — |
| S90SB9M15A06L | | | — | | | | | 30 | |
| S90SB9M15A08S | | | 8 | | | | | 26.9 | — |
| S90SB9M15A08L | | | — | | | | | 30 | |
| S90SB9M15A10S | | | 10 | | | | | 26.9 | — |
| S90SB9M15A10L | — | 30 | | | | | | | |
| S90SB9M17A06S | 1.13 | 10 | 6 | 14.7 | 45.5 | 41.7 | 2.4 | 30.2 | — |
| S90SB9M17A06L | | | — | | | | | 33.5 | |
| S90SB9M17A10S | | | 10 | | | | | 30.2 | — |
| S90SB9M17A10L | | | — | | | | | 33.5 | |
| S90SB9M17A12S | | | 12 | | | | | 30.2 | — |
| S90SB9M17A12L | — | 33.5 | | | | | | | |
| S90SB9M19A06S | 2.03 | 12 | 6 | 10.9 | 50.8 | 45 | 3.7 | 30.2 | — |
| S90SB9M19A06L | | | — | | | | | 35 | |
| S90SB9M19A10S | | | 10 | | | | | 30.2 | — |
| S90SB9M19A10L | | | — | | | | | 35 | |
| S90SB9M23A08S | | | 8 | | | | | 35.6 | — |
| S90SB9M23A08L | — | 41.9 | | | | | | | |
| S90SB9M23A10S | 3.95 | 13 | 10 | 20 | 60 | 52.1 | 4.5 | 35.6 | — |
| S90SB9M23A10L | | | — | | | | | 41.9 | |
| S90SB9M23A12S | | | 12 | | | | | 35.6 | — |
| S90SB9M23A12L | | | — | | | | | 41.9 | |
| S90SB9M23A16S | | | 16 | | | | | 35.6 | — |
| S90SB9M23A16L | — | 41.9 | | | | | | | |

| Catalog Number (Series Ref.) | Thread | Nom. Resistance Ohms | Armature | | Rotor Inertia kgf • m • sec ² | Energy Dissipation N • m/min | Weight kg |
|------------------------------|--------|----------------------|-----------------|--------------------|--|------------------------------|-----------|
| | | | Engagement msec | Disengagement msec | | | |
| S90SB9M15A... | M2 | 96 | 20 | 10 | 0.5 x 10 ⁻⁷ | 678 | 0.1 |
| S90SB9M17A... | M3 | 64 | 20 | 10 | 0.21 x 10 ⁻⁶ | 949 | 0.3 |
| S90SB9M19A... | | 54 | 35 | | 0.27 x 10 ⁻⁶ | 1220 | |
| S90SB9M23A... | M3 | 46.5 | 70 | 20 | 0.20 x 10 ⁻⁶ | 1627 | 0.5 |

Continued on the next page

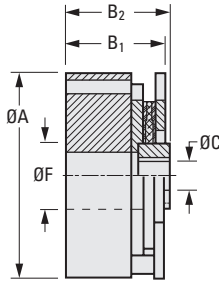
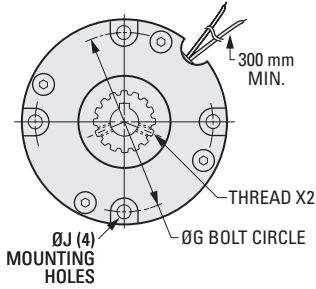
SIMPLE INSTALLATION
ECONOMICAL COST
ENERGY EFFICIENT

PHONE: 516.328.3300 • FAX: 516.326.8827 • WWW.SDP-SI.COM



> COIL DATA:

Voltage: 24V DC



The projections shown are per ISO convention.

| Keyway Dimensions | | | |
|-------------------|-----------|-----------|-----------|
| Bore | 10 | 12 | 16 |
| Width | 3 | 4 | 5 |
| Height | 11.4 | 13.8 | 18.3 |

METRIC COMPONENT

| Catalog Number | Static Torque N•m | Max. Watts | C Bore | F Case Inside Dia. | A Dia. | G | J | B ₁ OAL Short Hub | B ₂ OAL Long Hub |
|----------------|-------------------|------------|--------|--------------------|--------|------|-----|------------------------------|-----------------------------|
| S90SB9M26A10S | 4.52 | 19 | 10 | 16 | 72.9 | 63.5 | 4.5 | 31 | — |
| S90SB9M26A10L | | | — | | | | | 36.8 | |
| S90SB9M26A12S | | | 12 | | | | | 31 | — |
| S90SB9M26A12L | | | — | | | | | 36.8 | |
| S90SB9M28A10S | 9.04 | 20 | 10 | 30 | 77 | 70 | 4.5 | 31 | — |
| S90SB9M28A10L | | | — | | | | | 36.8 | |
| S90SB9M28A12S | | | 12 | | | | | 31 | — |
| S90SB9M28A12L | | | — | | | | | 36.8 | |
| S90SB9M28A16S | | | 16 | | | | | 31 | — |
| S90SB9M28A16L | | | — | | | | | 36.8 | |

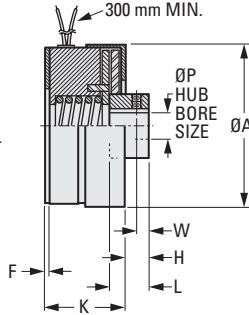
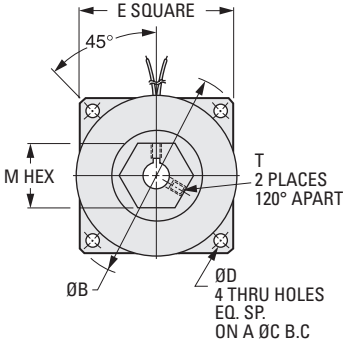
| Catalog Number (Series Ref.) | Thread | Nom. Resistance Ohms | Armature | | Rotor Inertia kgf • m • sec ² | Energy Dissipation N • m/min | Weight kg |
|------------------------------|--------|----------------------|-----------------|--------------------|--|------------------------------|-----------|
| | | | Engagement msec | Disengagement msec | | | |
| S90SB9M26A... | M4 | 33 | 80 | 20 | 0.13 x 10 ⁻⁵ | 1898 | 0.5 |
| S90SB9M28A... | M4 | 36 | 50 | 40 | 0.12 x 10 ⁻⁶ | 2440 | 0.8 |

Continued from the previous page

> COIL DATA:

Voltage: 24V DC

Other voltages available on special order.



The projections shown are per ISO convention.

Keyway Dimensions

| | | |
|---------------|----------|-----------|
| Bore | 6 | 12 |
| Width | 2 | 4 |
| Height | 7 | 13.8 |

METRIC COMPONENT

| Catalog Number * | Min. Static Torque N • m | Max. Wattage | P Hub Bore | A | B | C | D | E |
|------------------|--------------------------|--------------|------------|------|-------|------|-----|------|
| S90BRCM11A05 | 0.565 | 7 | 5 Δ | 32.1 | 38.05 | 33.3 | 3.2 | 29 |
| S90BRCM11A06 | 0.565 | 7 | 6 | 32.1 | 38.05 | 33.3 | 3.2 | 29 |
| S90BRCM26A12 | 5.65 | 14 | 12 | 67.1 | 88.87 | 79.4 | 5.1 | 66.8 |

| Catalog Number * (Ref.) | F | H | K | L | M | T Set Screws | W | Weight kg |
|-------------------------|-----|------|------|------|------|--------------|-----|-----------|
| S90BRCM11A05 | 1.6 | 8.5 | 27.7 | 12.2 | 12.7 | M3 | 4.3 | 0.1 |
| S90BRCM11A06 | 1.6 | 8.5 | 27.7 | 12.2 | 12.7 | M3 | 4.3 | 0.1 |
| S90BRCM26A12 | 1.6 | 13.2 | 34.8 | 19.6 | 22.2 | M5 | 7.9 | 0.7 |

* To be discontinued when present stock is depleted.

Δ No keyway supplied with 5 mm bore.

- I
- R
- T
- 1
- 2
- 3
- 4
- 5
- 6
- 7
- 8
- 9
- 10
- 11
- 12
- 13
- 14
- 15
- A

POWER-OFF PARALLEL PLATE BRAKES

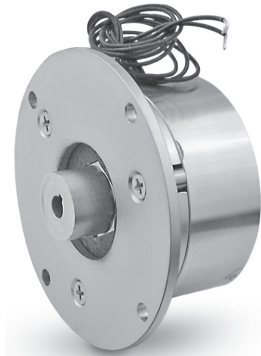
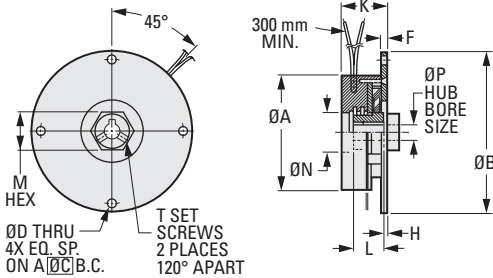
SDP/SI

STOPS CRITICAL LOADS UPON POWER FAILURE PHONE: 516.328.3300 • FAX: 516.326.8827 • WWW.SDP-SI.COM

> COIL DATA:

Voltage: 24V DC

Other voltages available on special order.



The projections shown are per ISO convention.

Keyway Dimensions

| | | |
|--------|---|-----|
| Bores | 6 | 8 |
| Width | 2 | 3 |
| Height | 7 | 9.4 |

METRIC COMPONENT

| Catalog Number * | Min. Static Torque N • m | Max. Wattage | P Hub Bore | A | B | C | D |
|------------------|--------------------------|--------------|------------|------|-------|------|-----|
| S90BRPM22A06 | 0.904 | 8 | 6 | 57.2 | 81.28 | 72.1 | 4.5 |
| S90BRPM22A08 | 0.904 | 8 | 8 | 57.2 | 81.28 | 72.1 | 4.5 |
| S90BRPM23A06 | 1.694 | 8 | 6 | 60.4 | 82.55 | 72.1 | 4.7 |
| S90BRPM23A08 | 1.694 | 8 | 8 | 60.4 | 82.55 | 72.1 | 4.7 |

| Catalog Number * (Ref.) | F | H | K | L | M | T Set Screws | N | Weight kg |
|-------------------------|-----|-----|------|------|------|--------------|------|-----------|
| S90BRPM22A06 | 2.5 | 0.5 | 22.9 | 15.8 | 19.1 | M3 | 19.8 | 0.3 |
| S90BRPM22A08 | 2.5 | 0.5 | 22.9 | 15.8 | 19.1 | M3 | 19.8 | 0.3 |
| S90BRPM23A06 | 3.1 | 2.9 | 36.9 | 19.1 | 19.1 | M3 | 19.8 | 0.4 |
| S90BRPM23A08 | 3.1 | 2.9 | 36.9 | 19.1 | 19.1 | M3 | 19.8 | 0.4 |

* To be discontinued when present stock is depleted.