

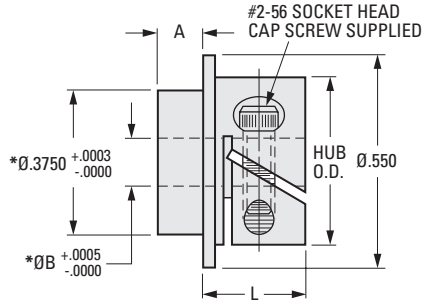
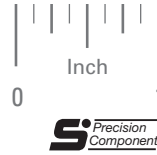
> MATERIAL:

303 Stainless Steel

PHONE: 516.328.3300 • FAX: 516.326.8827 • WWW.SDP-SI.COM

Available on special order:
Hubs assembled to gears or
dials, and passivation.

Fairloc® hubs require controlled
shaft tolerances. Suggested clearance
fit between the bore and the shaft is .0001/.0008.



*Diameters Concentric within .0003 T.I.R

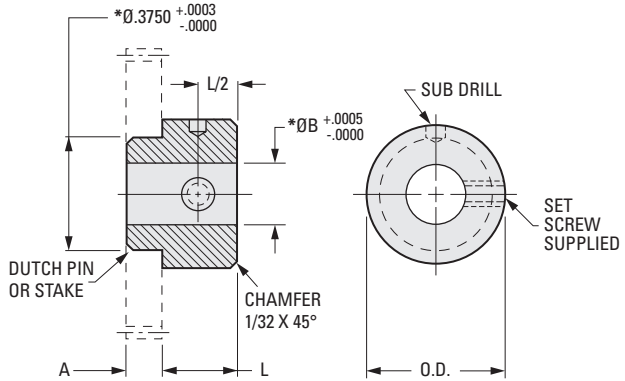
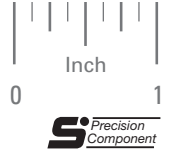
INCH COMPONENT

Catalog Number	A	B Bore	L	Hub O.D.	Cap Screw Clearance Radius
S2F06Y-062090	.062	.0900	.265	.437	.273
S2F06Y-125090	.125	.0900	.265	.437	.273
S2F06Y-062094	.062	.0937	.265	.437	.273
S2F06Y-125094	.125	.0937	.265	.437	.273
S2F06Y-062120	.062	.1200	.265	.437	.273
S2F06Y-125120	.125	.1200	.265	.437	.273
S2F06Y-062125	.062	.1248	.265	.437	.273
S2F06Y-125125	.125	.1248	.265	.437	.273
S2F06Y-062187	.062	.1873	.265	.437	.273
S2F06Y-125187	.125	.1873	.265	.437	.273
S2F06Y-187187	.187	.1873	.265	.437	.273
S2F06Y-062241	.062	.2405	.295	.530	.304
S2F06Y-125241	.125	.2405	.295	.530	.304
S2F06Y-187241	.187	.2405	.295	.530	.304
S2F06Y-062250	.062	.2498	.295	.530	.304
S2F06Y-125250	.125	.2498	.295	.530	.304
S2F06Y-187250	.187	.2498	.295	.530	.304

MATERIAL:
303 Stainless Steel

PHONE: 516.328.3300 • FAX: 516.326.8827 • WWW.SDP-SI.COM

Available on special order:
Hubs assembled to gears or
dials, and passivation.



*Diameters Concentric within .0003 T.I.R.

INCH COMPONENT

Catalog Number	A	B Bore	L	O.D.	Set Screw
S2006Y-125078	.125	.0781	.22	7/16	#2-56
S2006Y-125090	.125	.0900	.22	7/16	#2-56
S2006Y-062094	.062	.0937	.22	7/16	#2-56
S2006Y-125094	.125	.0937	.22	7/16	#2-56
S2006Y-062120	.062	.1200	.22	7/16	#2-56
S2006Y-125120	.125	.1200	.22	7/16	#2-56
S2006Y-062125	.062	.1248	.22	7/16	#2-56
S2006Y-125125	.125	.1248	.22	7/16	#2-56
S2006Y-062156	.062	.1562	.22	7/16	#2-56
S2006Y-125156	.125	.1562	.22	7/16	#2-56
S2006Y-062187	.062	.1873	.22	7/16	#4-40
S2006Y-125187	.125	.1873	.22	7/16	#4-40
S2006Y-062241	.062	.2405	.25	1/2	#6-32
S2006Y-125241	.125	.2405	.25	1/2	#6-32
S2006Y-062250	.062	.2498	.25	1/2	#6-32
S2006Y-125250	.125	.2498	.25	1/2	#6-32

> MATERIAL:

303 Stainless Steel

PHONE: 516.328.3300 • FAX: 516.326.8827 • WWW.SDP-SI.COM

Use with S1268Z...series of hubless gears.

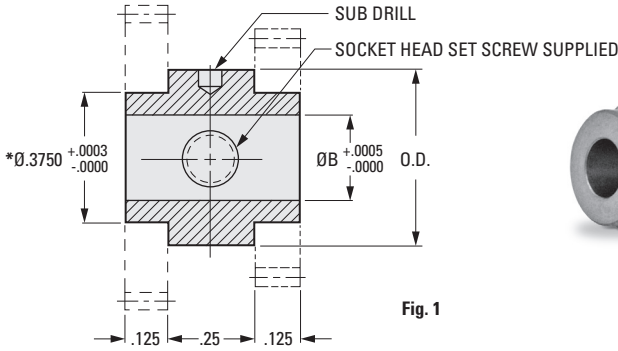
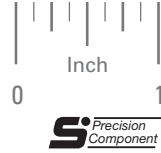


Fig. 1

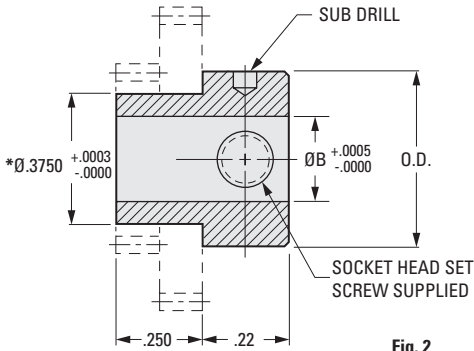
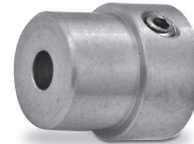


Fig. 2



*.3750 Diameters Concentric to bore within .0003 T.I.R.

INCH COMPONENT

Catalog Number	B Bore	O.D.	Set Screw
Fig. 1			
S2706Y-125078CL	.0781	7/16	#2-56
S2706Y-125120CL	.1200	7/16	#2-56
S2706Y-125125CL	.1248	7/16	#2-56
S2706Y-125156CL	.1562	7/16	#2-56
S2706Y-125187CL	.1873	7/16	#4-40
S2706Y-125250CL	.2498	1/2	#6-32
Fig. 2			
S2706Y-250078CL	.0781	7/16	#2-56
S2706Y-250120CL	.1200	7/16	#2-56
S2706Y-250125CL	.1248	7/16	#2-56
S2706Y-250156CL	.1562	7/16	#2-56
S2706Y-250187CL	.1873	7/16	#4-40
S2706Y-250250CL	.2498	1/2	#6-32



PIN TYPE GEAR HUB



PHONE: 516.328.3300 • FAX: 516.326.8827 • WWW.SDP-SI.COM

> MATERIAL:

2024-T4 Aluminum Alloy

> FINISH:

Clear Anodized

> SPECIFICATIONS:

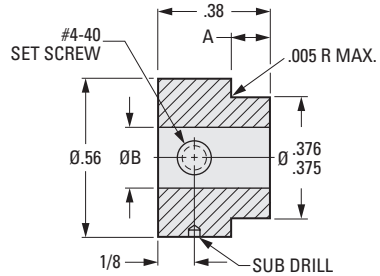
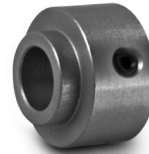
For Gears with 1/32 face width, use hub with .062 "A" dim.

For Gears with 1/16 face width, use hub with .093 "A" dim.

For Gears with 3/32 face width, use hub with .125 "A" dim.



These hubs can be used with stamped or molded hubless gears or disc and drum dials.



INCH COMPONENT

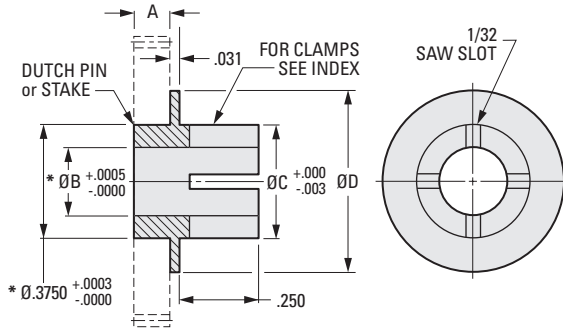
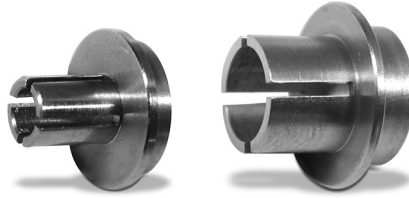
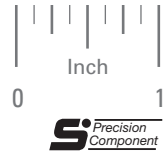
Catalog Number	A ± .010	B Bore Dia. +.001 -.000
A 1A16-25612	.062	.125
A 1A16-35612	.093	.125
A 1A16-45612	.125	.125
A 1A16-35615	.093	.156
A 1A16-45615	.125	.156
A 1A16-25618	.062	.187
A 1A16-35618	.093	.187
A 1A16-45618	.125	.187
A 1A16-25621	.062	.218
A 1A16-45621	.125	.218
A 1A16-25625	.062	.250
A 1A16-35625	.093	.250
A 1A16-45625	.125	.250
A 1A16-25628	.062	.281
A 1A16-35628	.093	.281
A 1A16-45628	.125	.281

> MATERIAL:

303 Stainless Steel

PHONE: 516.328.3300 • FAX: 516.326.8827 • WWW.SDP-SI.COM

Available on special order:
Hubs assembled to gears or
dials, passivation.



* Diameters concentric within .0003 T.I.R.

INCH COMPONENT

Catalog Number	A $\begin{smallmatrix} +.005 \\ -.000 \end{smallmatrix}$	B Bore	C Dia.	D Dia.
S2106Y-062120	.062	.1200	.188	7/16
S2106Y-125120	.125			
S2106Y-062125	.062	.1248	.250	
S2106Y-125125	.125			
S2106Y-062156	.062	.1562	.250	
S2106Y-125156	.125			
S2106Y-062187	.062	.1873	.312	1/2
S2106Y-125187	.125			
S2106Y-062241	.062	.2405	.312	
S2106Y-125241	.125			
S2106Y-062250	.062	.2498		