

WORM GEAR SPEED REDUCERS



COMMERCIAL QUALITY
SINTERED BEARINGS
MULTIPLE RATIOS
RATED SPEEDS UP TO 1800 rpm
BRONZE DRIVEN GEAR

PHONE: 516.328.3300 • FAX: 516.326.8827 • WWW.SDP-SI.COM



MATERIAL:

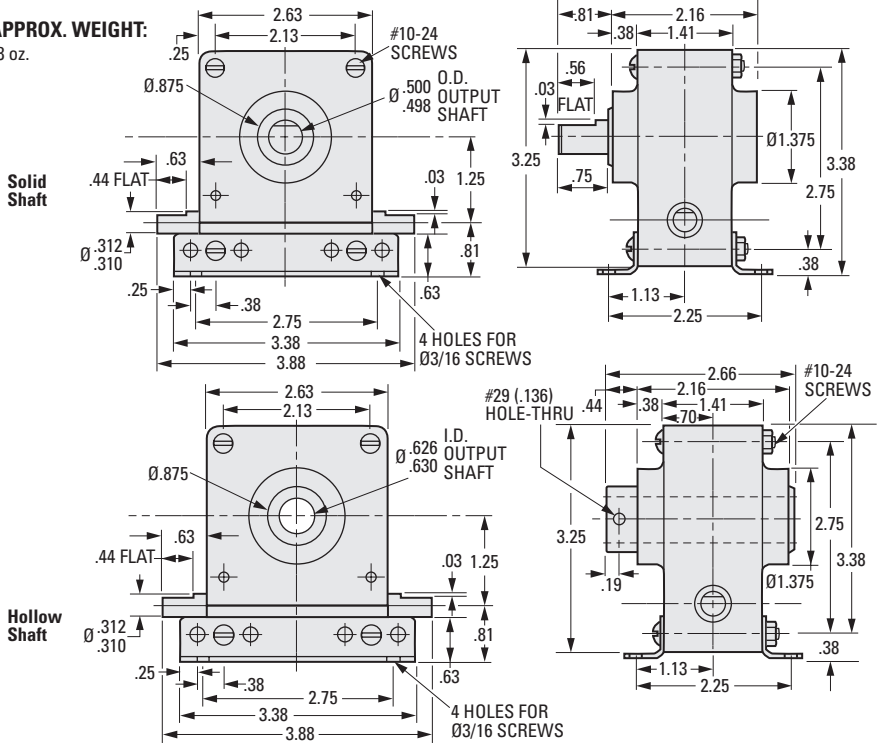
- Case** - Compression-Molded Glass-fill Polyester
- Gears** - Precision-Hobbed Bronze Driven Gear
Ground Steel Worm - Right-Hand
- Bearings** - Input and Output Shafts - Sintered Bronze
- Shafts** - Ground & Polished Steel
- Lubrication** - Gears are Prelubricated with Grease
- Seals** - Input Shafts are sealed to retain lubrication and keep out dirt.

DIMENSIONS:

3-3/8 High x 3-7/8 Wide x 3 Deep

APPROX. WEIGHT:

28 oz.



INCH COMPONENT

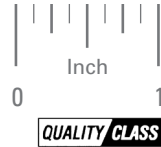
Catalog Number		1800 rpm Input				
Solid Shaft	Hollow Shaft	Ratio	Input hp	Output hp	Output rpm	Output Torque lbf in.
A 2B 7-S035	A 2B 7-H035	3.5:1	.84	.82	514	102
A 2B 7-S100	A 2B 7-H100	10:1	.33	.30	180	102
A 2B 7-S150	A 2B 7-H150	15:1	.27	.24	120	102
A 2B 7-S200	A 2B 7-H200	20:1	.225	.18	90	105
A 2B 7-S300	A 2B 7-H300	30:1	.15	.12	60	120
A 2B 7-S400	A 2B 7-H400	40:1	.10	.08	45	112
A 2B 7-S480	A 2B 7-H480	48:1	.09	.06	38	96
A 2B 7-S600	A 2B 7-H600	60:1	.075	.035	30	75

WORM GEAR SPEED REDUCERS



PRECISION QUALITY
 STYLE "E"
 MULTIPLE RATIOS
 INPUT SPEEDS UP TO 6000 rpm

PHONE: 516.328.3300 • FAX: 516.326.8827 • WWW.SDP-SI.COM



➤ **MATERIAL:**

- Housing** - Aluminum Alloy, Black Anodized
- Shafts - Input (one piece with worm)** - Carbon Steel
- Output** - Mild Steel
- Gears - Right-Hand Worm** - Hardened Carbon Steel with Polished Threads
- Worm Wheel** - Phosphor Bronze
- Bearings - Input** - Ball Bearings
- Output** - Sintered Bronze Bearings

➤ **LUBRICATION:**

Packed with grease at assembly having temperature range of -25°F to +295°F.

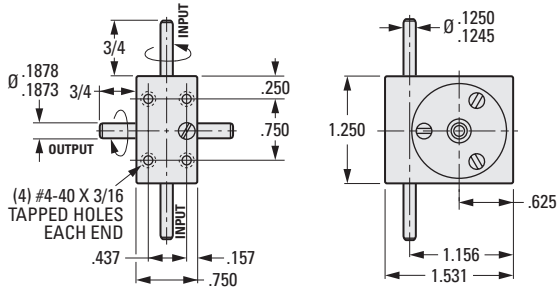
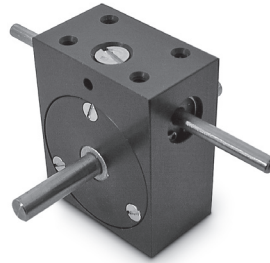
➤ **SPECIFICATIONS:**

- Max. Input Speed:** 6000 rpm
- Backlash at Output:** 0° 30'
- Torque:**
- Max. starting torque at input shaft:** .07 ozf in.
- Max. cont. output torque @ 1800 rpm:** 4.5 lbf in.

➤ **WEIGHT:**

2.75 oz.

Other ratios available on special order.



Style "E"

INCH COMPONENT

Catalog Number	Ratio to 1
A 2Z17-E0080	8
A 2Z17-E0166	16.67
A 2Z17-E0200	20
A 2Z17-E0500	50
A 2Z17-E0600	60

NOTE:

Also available in other styles where special shaft diameters or extensions are required. These speed reducers are available with anti-backlash gears. Input speed, however, is limited to 3000 rpm with a maximum continuous output torque of 1.3 ozf in. Maximum starting torque at input shaft is .85 ozf in.

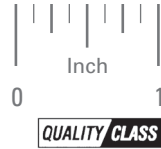
- I
- R
- T
- 1
- 2
- 3
- 4
- 5
- 6
- 7
- 8
- 9
- 10
- 11
- 12
- 13
- 14
- 15
- A

WORM GEAR SPEED REDUCERS



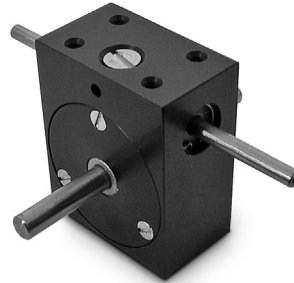
PRECISION QUALITY
 STYLE "E"
 MULTIPLE RATIOS
 INPUT SPEEDS UP TO 6000 rpm

PHONE: 516.328.3300 • FAX: 516.326.8827 • WWW.SDP-SI.COM



➤ **MATERIAL:**

- Housing** - Aluminum Alloy, Black Anodized
- Shafts - Input** - Carbon Steel
- Output** - Mild Steel
- Gears - Worm** - Hardened Carbon Steel with Polished Right-Hand Threads
- Worm Wheel** - Phosphor Bronze
- Bearings - Input** - Ball Bearings
- Output** - Sintered Bronze Bearings



➤ **LUBRICATION:**

Packed with grease at assembly having a temperature range of -25°F to +295°F.

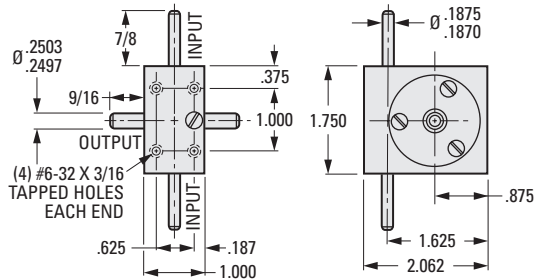
➤ **SPECIFICATIONS:**

- Max. Input Speed:** 6000 rpm
- Backlash at Output:** 0° 30'
- Torque:**
- Max. starting torque at input shaft:** .14 ozf in.
- Max. cont. output torque @ 1800 rpm:** 13 lbf in.

➤ **WEIGHT:**

7.0 oz.

Other ratios available on special order.



Style "E"

NOTE:

Also available in other styles where special shaft diameters or extensions are required. These speed reducers are available with anti-backlash gears. Input speed however is limited to 3000 rpm with a maximum continuous output torque of 1.5 lbf in. Maximum starting torque at input shaft is 3.19 ozf in.

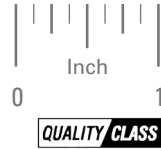
INCH COMPONENT

Catalog Number	Ratio to 1
A 2Z18-E0100	10
A 2Z18-E0166	16.67
A 2Z18-E0170	17
A 2Z18-E0200	20
A 2Z18-E0250	25
A 2Z18-E0300	30
A 2Z18-E0360	36
A 2Z18-E0400	40
A 2Z18-E0420	42
A 2Z18-E0900	90
A 2Z18-E1000	100



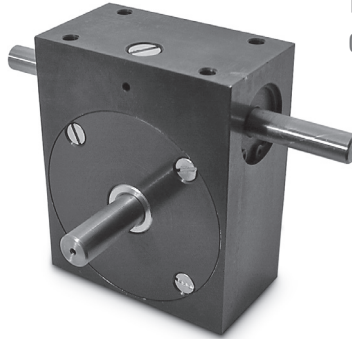
PRECISION QUALITY
 STYLE "E"
 MULTIPLE RATIOS
 INPUT SPEEDS UP TO 6000 rpm

PHONE: 516.328.3300 • FAX: 516.326.8827 • WWW.SDP-SI.COM



MATERIAL:

- Housing** - Aluminum Alloy, Black Anodized
- Shafts - Input** - Carbon Steel
- Output** - Mild Steel
- Gears - Worm** - Hardened Carbon Steel with Polished Right-Hand Threads
- Worm Wheel** - Phosphor Bronze
- Bearings - Input** - Ball Bearings
- Output** - Sintered Bronze Bearings



LUBRICATION:

Packed with grease at assembly having a temperature range of -25°F to +295°F.

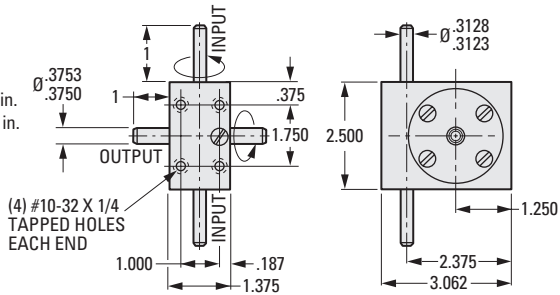
SPECIFICATIONS:

- Max. Input Speed:** 6000 rpm
- Backlash at Output:** 0° 30'
- Torque:**
- Max. starting torque at input shaft:** 1.12 ozf in.
- Max. cont. output torque @ 1800 rpm:** 39 lbf in.

WEIGHT:

21 oz.

Other ratios available on special order.



Style "E"

INCH COMPONENT

Catalog Number	Ratio to 1
A 2Z19-E0060	6
A 2Z19-E0075	7.5
A 2Z19-E0100	10
A 2Z19-E0150	15
A 2Z19-E0200	20
A 2Z19-E0300	30
A 2Z19-E0360	36
A 2Z19-E0400	40
*A 2Z19-E0480	48
A 2Z19-E0500	50
A 2Z19-E0600	60
*A 2Z19-E0700	70
A 2Z19-E0900	90

NOTE:

Also available in other styles where special shaft diameters or extensions are required. These speed reducers are available with anti-backlash gears. Input speed, however, is limited to 3000 rpm with a maximum continuous output torque of 2.6 lbf in. Maximum starting torque at input shaft is 15.8 ozf in.

* To be discontinued when present stock is depleted.

