

RING MOUNTINGS • TO 20 lbf

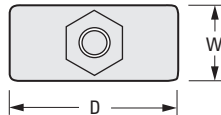
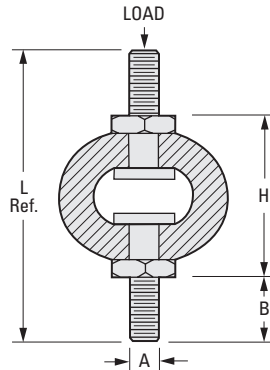
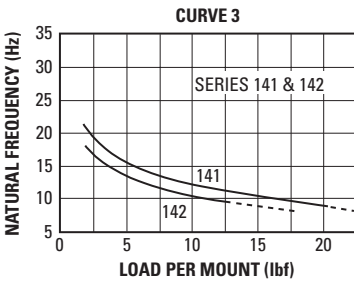
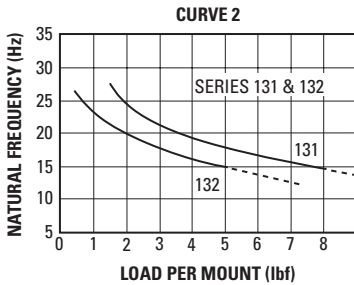
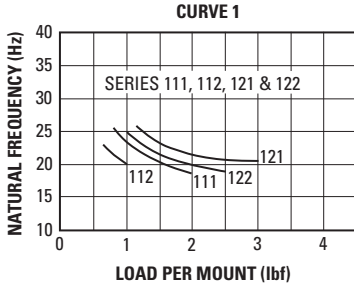


FOR LOADS OF 1 TO 20 lbf

PHONE: 516.328.3300 • FAX: 516.326.8827 • WWW.SDP-SI.COM

> MATERIAL:

- Fasteners - Steel, Zinc Plated
- Isolator - Natural Rubber



INCH COMPONENT

Catalog Number	Rated Load lbf	A	B	H (Load)	H (No Load)	D	L Ref.	W	K Dynamic Spring Rate lbf / in.	C Damping Constant
A10Z 8-112	1.0	#6-32	.50	.51	.56	.53	1.56	.31	90	.193
A10Z 8-111	2.0	#6-32	.50	.51	.56	.53	1.56	.31	155	.376
A10Z 8-122	2.5	#10-32	.62	.58	.68	.68	1.93	.34	63	.025
A10Z 8-121	3.0	#10-32	.62	.58	.68	.68	1.93	.34	77	.058
A10Z 8-132	5.0	1/4-20	.75	.81	.93	1.00	2.54	.53	137	.027
A10Z 8-131	8.0	1/4-20	.75	.81	.93	1.00	2.54	.53	210	.174
A10Z 8-142	13.0	5/16-18	.62	1.45	1.75	1.62	3.00	.75	122	.136
A10Z 8-141	20.0	5/16-18	.62	1.45	1.75	1.62	3.00	.75	172	.262

NOTE: Static K is approximately 1/2 to 1/3 Dynamic Rate.