

NONSLIP
3/16, 1/4 & 5/16 DIAMETER

PHONE: 516.328.3300 • FAX: 516.326.8827 • WWW.SDP-SI.COM

> MATERIAL:

Belting - Polyurethane
Connectors - Aluminum



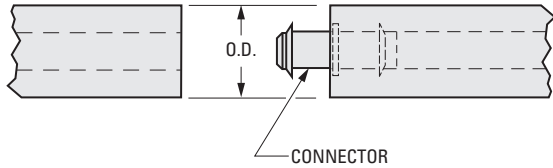
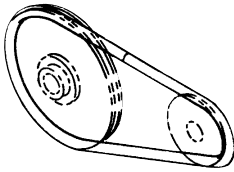
> OPERATING TEMPERATURE:

-40° F to +150° F

> INSTALLATIONS:

For Open Drives - Make belt endless and roll onto pulleys.

For Closed Drives - String belt around pulleys, insert connector and roll onto pulleys.



INCH COMPONENT

Catalog Number Belting	O.D.	Recommended Minimum Pulley Dia.	Coefficient of Friction	Catalog Number Connectors
Priced Per Foot				Priced Per 10 Pieces
A 6R 1-A06	3/16	1-1/2	.5 to .7	A 6A 1-C06
A 6R 1-A08	1/4	2	.5 to .7	A 6A 1-C08
A 6R 1-A10	5/16	2-1/2	.5 to .7	A 6A 1-C10

These belts can be used with Companion Pulleys and Grooved Idlers, having diameters at least 8 times belt diameters. See index.

Table No. 1 Installed Belt Tension

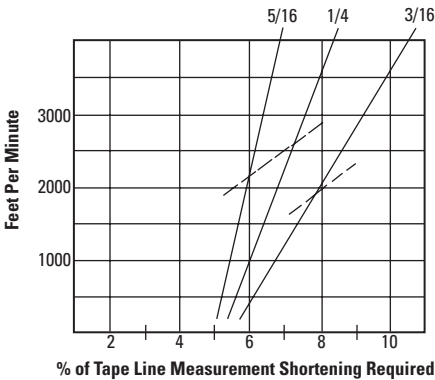
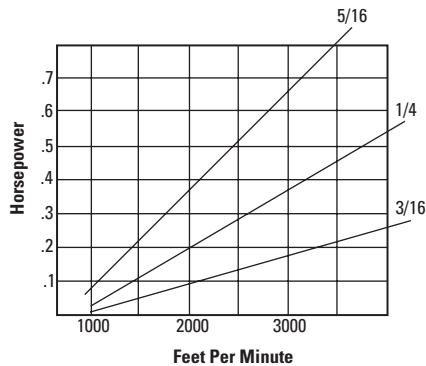


Table No. 2 Maximum hp Capacity



--- Maximum Feet Per Minute for Minimum Pulley Diameter