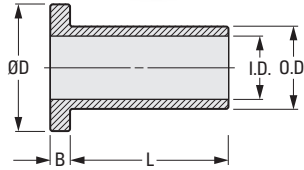


# MOLDED SCREW INSULATORS



PHONE: 516.328.3300 • FAX: 516.326.8827 • WWW.SDP-SI.COM

NONCONDUCTIVE  
NONCORROSIVE  
LIGHTWEIGHT  
SELF-SEALING  
SELF-LOCKING



► **MATERIAL:**  
Nylon (Zytel 101)

► **SPECIFICATION:**  
Priced Per 100 Pieces

## INCH COMPONENT

Catalog Number	Screw Size	O.D.	I.D.	L Length	D Dia.	B
A 9M70-0612	#2	.120	.090	1/8	.181	3/64
A 9M70-0618	#2	.120	.090	3/16	.181	3/64
A 9M70-0625	#2	.120	.090	1/4	.181	3/64
A 9M70-0637	#2	.120	.090	3/8	.181	3/64
A 9M70-0803	#4	.145	.115	1/32	.235	3/64
A 9M70-0809	#4	.145	.115	3/32	.235	3/64
A 9M70-0812	#4	.145	.115	1/8	.235	3/64
A 9M70-0818	#4	.145	.115	3/16	.235	3/64
A 9M70-0837	#4	.145	.115	3/8	.235	3/64
A 9M70-0850	#4	.145	.115	1/2	.235	3/64
A 9M70-0912	#6	.170	.140	1/8	.290	3/64
A 9M70-0918	#6	.170	.140	3/16	.290	3/64
A 9M70-0925	#6	.170	.140	1/4	.290	3/64
A 9M70-0937	#6	.170	.140	3/8	.290	3/64
A 9M70-0950	#6	.170	.140	1/2	.290	3/64
A 9M70-1114	#8	.205	.173	9/64	.344	1/16
A 9M70-1125	#8	.205	.173	1/4	.344	1/16
A 9M70-1137	#8	.205	.173	3/8	.344	1/16
A 9M70-1150	#8	.205	.173	1/2	.344	1/16
A 9M70-1162	#8	.205	.173	5/8	.344	1/16
A 9M70-1175	#8	.205	.173	3/4	.344	1/16
A 9M70-1325	#10	.260	.200	1/4	.399	1/16
A 9M70-1337	#10	.260	.200	3/8	.399	1/16
A 9M70-1350	#10	.260	.200	1/2	.399	1/16
A 9M70-1362	#10	.260	.200	5/8	.399	1/16
A 9M70-1375	#10	.260	.200	3/4	.399	1/16
A 9M70-1618	1/4	.312	.260	3/16	.513	1/16
A 9M70-1625	1/4	.312	.260	1/4	.513	1/16
A 9M70-1637	1/4	.312	.260	3/8	.513	1/16
A 9M70-1650	1/4	.312	.260	1/2	.513	1/16
A 9M70-1662	1/4	.312	.260	5/8	.513	1/16
A 9M70-1675	1/4	.312	.260	3/4	.513	1/16