

PRECISION SET SCREW SHAFT COLLARS

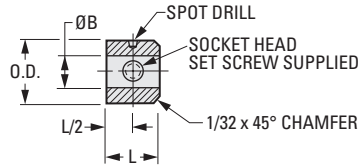
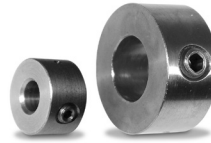
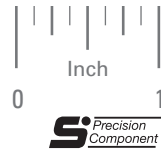


> MATERIAL:

303 Stainless Steel

PHONE: 516.328.3300 • FAX: 516.326.8827 • WWW.SDP-SI.COM

Other materials, sizes and passivation available on special order.



INCH COMPONENT

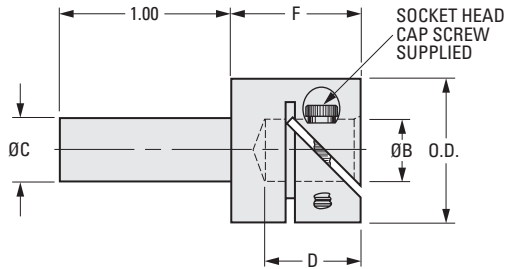
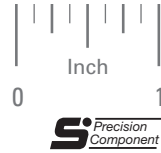
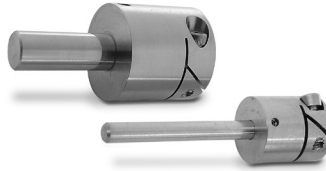
Catalog Number	Shaft Size	O.D.	Bore +0.0005 -0.0000	L	Screw Size
S5000Y-07807	5/64	7/32	.0779	.12	#0-80
S5000Y-09408	3/32	1/4	.0935		
S5000Y-12510	1/8	5/16	.1248	.18	#2-56
S5000Y-18712	3/16	3/8	.1873	.22	#4-40
S5000Y-24116	.24	1/2	.2405	.25	#6-32
S5000Y-25016	1/4		.2498		
S5000Y-31218	5/16	9/16	.3123	.28	#6-32
S5000Y-37524	3/8	3/4	.3748	.37	#10-32
S5000Y-50032	1/2	1	.4998	.50	1/4-20

> MATERIAL:

303 Stainless Steel

PHONE: 516.328.3300 • FAX: 516.326.8827 • WWW.SDP-SI.COM

Fairloc® hubs require controlled shaft tolerances. Suggested clearance fit between the bore and shaft is .0001/.0008.



INCH COMPONENT

Catalog Number	Shaft Size		O.D.	B Bore +.0005 -.0000	C Dia. +.0000 -.0002	D	F	Screw Size	Cap Screw Clear. Radius
	Female	Male							
S52FCY-120125	.120	1/8	.437	.1200	.1247	.375	1/2	#2-56	.273
S52FCY-120187		3/16			.1872				
S52FCY-125125	1/8	.1247							
S52FCY-125187	3/16	.1872							
S52FCY-125250	1/4	.2497		.325					
S52FCY-187125	1/8	.1247		.375					
S52FCY-187187	3/16	.1872		.325					
S52FCY-187250	1/4	.2497		.325					
S52FCY-241187	3/16	.1872	.530	.2405	.1872	.375	1/2	#2-56	.315
S52FCY-241250	1/4	.2497							
S52FCY-241375	3/8	.3747							
S52FCY-250125	1/8	.1247							
S52FCY-250187	3/16	.1872							
S52FCY-250250	1/4	.2497							
S52FCY-250375	3/8	.3747	.870	.3748	.2497	.563	3/4	#6-32	.495
S52FCY-375250	1/4	.2497							
S52FCY-375375	3/8	3/8	1.000	.4998	.3747	.750	1	#6-32	.552
S52FCY-375500	1/2	1/2			.4997				
S52FCY-500375	3/8	3/8	1.000	.4998	.3747	.750	1	#6-32	.552
S52FCY-500500	1/2	1/2			.4997				