

SOLO UNITIZED CENTER BOLT MOUNTS



FOR LOADS OF 60 TO 1300 lbf
SOLO TYPE

PHONE: 516.328.3300 • FAX: 516.326.8827 • WWW.SDP-SI.COM



MATERIAL:

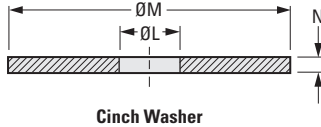
- Outer Body** - Natural Rubber Load-Carrying Member
- Spacer** - Steel, Tubular Rolled

INSTALLATION:

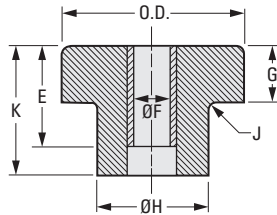
- Lubricate mount and socket with water or rubber lubricant.
- Insert into socket, hand rotate with axial force.
- If necessary, use driving bolt. Care must be taken that the driving bolt does not overhang the steel sleeve O.D.

SELECTION CRITERIA:

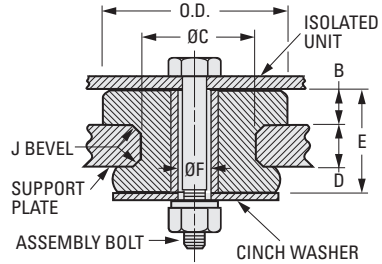
Calculate static load. Select a mount of equal or greater capacity. For dynamic loads greater than 3X static load, select next larger size.



Preassembly Dimensions



Catalog Number (Ref.)	Recommended Cinch Washer	L Dia.	M Dia.	N
A10Z42-1010	A 9C20-040	.40	1.56	.09
A10Z42-2000	A 9C20-040	.40	1.56	.09
A10Z42-4000	A 9C20-051	.51	2.00	.13
A10Z42-4040	A 9C20-040	.40	1.56	.09
A10Z42-4050	A 9C20-066	.66	2.81	.19
A10Z42-5000	A 9C20-066	.66	2.81	.19
A10Z42-6000	A 9C20-066	.66	2.81	.19
A10Z42-6020	A 9C20-066	.66	2.81	.19
A10Z42-7000	A 9C20-094	.94	3.88	.25
A10Z42-8020	A 9C20-106	1.06	5.25	.38



Solo Mounting

INCH COMPONENT

Catalog Number	Nominal Load Rating Axial lbf	Nominal Deflection Rating Axial in.	O.D.	B	C Dia.	D	E	F Dia.	G	H Dia.	J	K
A10Z42-1010	60	.010	1.00	.17	.75	.13	.44	.38	.18	.77	.03	.55
A10Z42-2000	125	.018	1.09	.19	.75	.31	.69	.38	.21	.78	.03	.96
A10Z42-4000	200	.015	2.00	.48	1.25	.62	1.38	.52	.52	1.31	.06	2.18
A10Z42-4040	200	.035	2.00	.46	1.25	.25	1.00	.39	.52	1.32	.06	1.30
A10Z42-4050	200	.030	2.00	.46	1.25	.25	1.00	.64	.52	1.25	.06	1.30
A10Z42-5000	425	.020	2.50	.56	1.50	.75	1.71	.64	.62	1.50	.06	2.20
A10Z42-6000	500	.030	3.00	.71	1.81	.93	2.00	.64	.81	1.81	.12	2.42
A10Z42-6020	500	.030	3.00	.76	1.81	.50	1.56	.64	.81	1.81	.12	1.97
A10Z42-7000	900	.075	3.75	.94	2.00	.75	2.12	.77	1.16	2.06	.09	2.66
A10Z42-8020	1300	.030	4.53	1.12	2.75	1.75	3.37	1.06	1.22	2.75	.12	4.34