

# SPRING POSTS

# SDP/SI

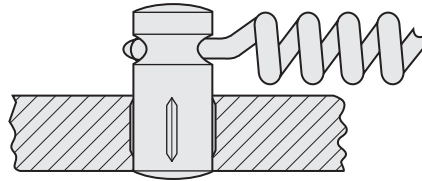
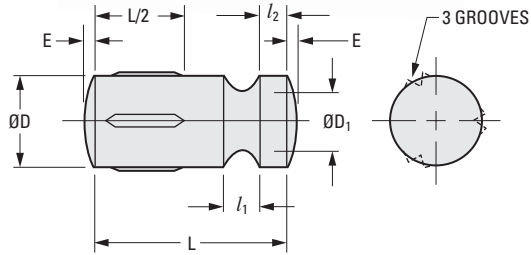
DIN 1469 TYPE C

PHONE: 516.328.3300 • FAX: 516.326.8827 • WWW.SDP-SI.COM

**> MATERIAL:**

Carbon Steel

Priced Per 100 Pieces



The projections shown are per ISO convention.

## METRIC COMPONENT

Catalog Number	D Dia.	Hole Tolerance	L	l <sub>1</sub>	D <sub>1</sub> Dia.	l <sub>2</sub>	E Crown Height
S7270YM3012	3	H9 +0.025/0	12	1	1.5	1	0.4
S7270YM3016			16				
S7270YM3020			20				
S7270YM3025			25				
S7270YM4012	4	H11 +0.075/0	12	1.4	2.4	1.4	0.5
S7270YM4016			16				
S7270YM4020			20				
S7270YM4025			25				
S7270YM4030			30				
S7270YM5012	5	H11 +0.075/0	12	1.6	2.8	1.6	0.6
S7270YM5016			16				
S7270YM5020			20				
S7270YM5025			25				
S7270YM5030	6	H11 +0.075/0	30	1.6	3.8	1.6	0.8
S7270YM6016			16				
S7270YM6020			20				
S7270YM6025			25				
S7270YM6030			30				

- I
- R
- T
- 1
- 2
- 3
- 4
- 5
- 6
- 7
- 8
- 9
- 10**
- 11
- 12
- 13
- 14
- 15
- A