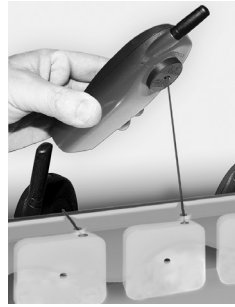


# SPRING-POWERED REELS



FOR POINT-OF-PURCHASE DISPLAYS  
 COMPACT SIZE  
 RETRACTABLE CABLE

PHONE: 516.328.3300 • FAX: 516.326.8827 • WWW.SDP-SI.COM



► **MATERIAL:**

- Case** - Nylon, Black or White
- Cable** - Stainless Steel, Nylon Coated
- Cable End Terminal** - Eyelet for #8 screw (.175 in.)
- Spring** - Stainless Steel

► **SPECIFICATION:**

**Endurance: Min. Number of Cycles:** 10,000

► **MODIFICATIONS:**

Other attachment plates, cable or end attachments are available on special request.

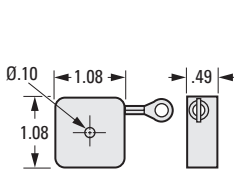


Fig. 1

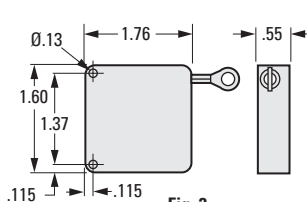


Fig. 2

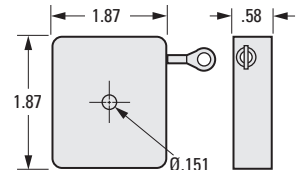


Fig. 3

## INCH COMPONENT

Catalog Number	Case Color	Nominal Max. Deflection in.	Nominal Retracting Load ozf at Max. Extension	Cable Min. Breaking Strength lbf
<b>Fig. 1 Cable - .018 in. Stainless Steel, Clear Nylon Coated to .024 in.</b>				
A 3Z55-A04	Black	26	4	40
<b>Fig. 2 Cable - .027 in. Stainless Steel, Black Nylon Coated to .034 in.</b>				
A 3Z55-B03	Black	42	3	90
<b>Fig. 3 Cable - .018 in. Stainless Steel, Clear Nylon Coated to .024 in.</b>				
A 3Z55-C03	White	60	3	40
A 3Z55-C07	White	50	7	40
A 3Z55-C12	White	40	12	40

NEW

**CABLE END FITTING  
SECURES PRODUCT  
UNOBTRUSIVELY TO DISPLAY  
SAVES ON ASSEMBLY COST  
ONE-PIECE CONSTRUCTION**

PHONE: 516.328.3300 • FAX: 516.326.8827 • WWW.SDP-SI.COM



**> MATERIAL:**

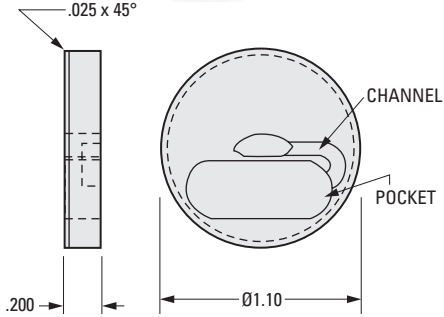
ABS Plastic, Black

**> MODIFICATIONS:**

Other cable attachment methods available on special request include:

1. Plastic attachment plate with or without white adhesive tape.
2. Stainless Steel attachment plate with adhesive tape.
3. Two plastic attachment plates one stationary & one sliding.

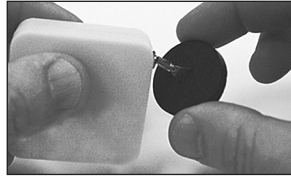
<b>INCH COMPONENT</b>
<b>Catalog Number</b>
<b>A 3Z55-CBLATT</b>



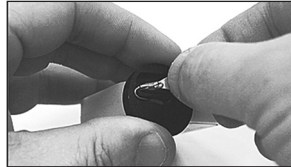
**NOTE:** Includes double-sided tape.

**To Assemble:**

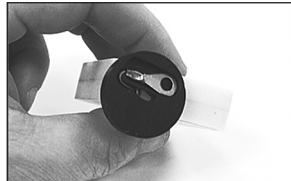
1. Place ring terminal into slot.



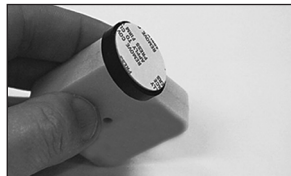
2. Holding the end of the terminal, guide cable through channel.



3. Depress terminal into "pocket".



4. Attach double-sided tape.



I

R

T

1

2

3

4

5

6

7

8

9

10

11

12

13

14

**NEW**

16

ARBOR-MOUNTED  
STEEL OR PLASTIC CASE

PHONE: 516.328.3300 • FAX: 516.326.8827 • WWW.SDP-SI.COM

► **MATERIAL: Spring-Powered Reel**

**Cable** - 7x7 Construction, Preformed Galvanized Steel, Nylon Coated

**Case** - ABS Plastic or Galvanized Steel

**Arbor** - Delrin

**Spring** - High Carbon Steel

► **MATERIAL: Square Stud**

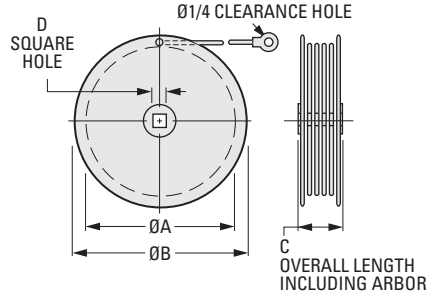
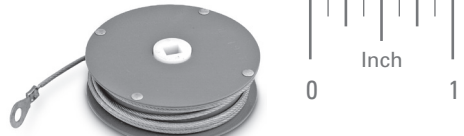
Steel, Plated

► **SPECIFICATION:**

Square clearance hole thru for mounting on square stud.

► **MODIFICATION:**

Different cable size, length or end connections are available on special order.

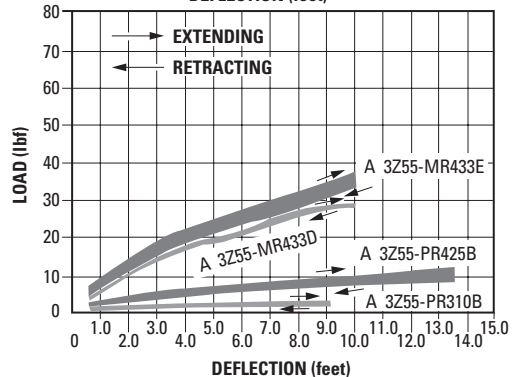
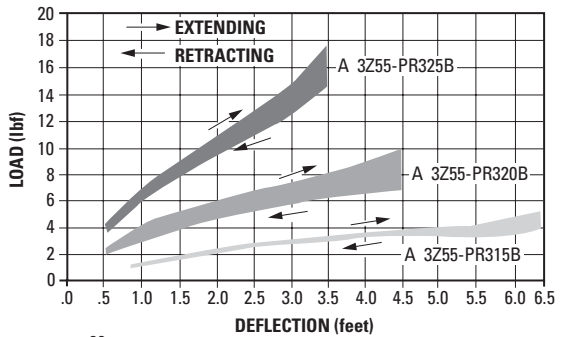
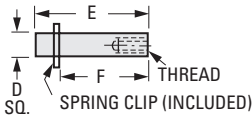


**INCH COMPONENT**

Catalog Number		A Dia.	B Dia.	C Arbor Length	D Square	Cable	
ABS Plastic Case	Galvanized Steel Case					Diameter Nylon Coated	Length in.
A 3Z55-PR310B	—	2-7/8	3-3/8	1-1/8	5/16	1/16	120
A 3Z55-PR315B	A 3Z55-MR315B	2-7/8	3-3/8	1-1/8	5/16	1/16	78
A 3Z55-PR320B	A 3Z55-MR320B	2-7/8	3-3/8	1-1/8	5/16	1/16	54
*A 3Z55-PR325B	A 3Z55-MR325B	2-7/8	3-3/8	1-1/8	5/16	1/16	42
A 3Z55-PR425B	A 3Z55-MR425B	4-1/8	5	1-1/8	5/16	3/32	162
—	A 3Z55-MR433D	4-1/8	5	1-3/8	7/16	3/32	120
—	A 3Z55-MR433E	4-1/8	5	1-5/8	7/16	3/32	120

\* To be discontinued when present stock is depleted.

Square Stud Catalog Number		
	A 3C55-0546	A 3C55-0771
D	5/16	7/16
E	1-7/16	2-15/64
F	1-3/16	1-31/32
Thread	1/4-20	3/8-16



**NOTE:** These are typical curves, not maximum and minimum values.

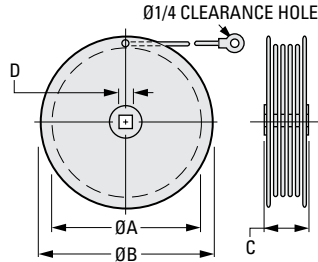
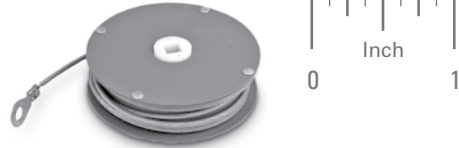
**NEW**

ARBOR-MOUNTED  
STEEL CASE

PHONE: 516.328.3300 • FAX: 516.326.8827 • WWW.SDP-SI.COM

**> MATERIAL:**

- Spring-Powered Reel:**
- Cable** - Ø3/32 Galvanized Steel, Nylon Coated to Ø1/8
- Case** - Steel, Epoxy Powder Coated
- Arbor** - Acetal (POM)
- Spring** - High-Carbon Steel
- Square Stud** - Steel, Plated



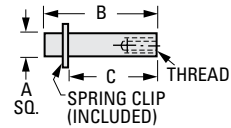
**INCH COMPONENT**

Catalog Number	A Dia.	B Dia.	C	D* Square	Cable Length in.	Retracting Force lbf
A 3Z53-ML1710	2-7/8	3-3/8	1	5/16	90	3.5
A 3Z53-ML1851					60	10.0
A 3Z53-ML1881					123	2.0
A 3Z53-ML1912					60	14.0
A 3Z53-ML2800	4-1/8	5	1-5/8	7/16	120	24.0
Δ A 3Z53-ML2801	5	6			108	35.0
A 3Z53-ML3976	2-7/8	3-3/8	1	5/16	60	6.0

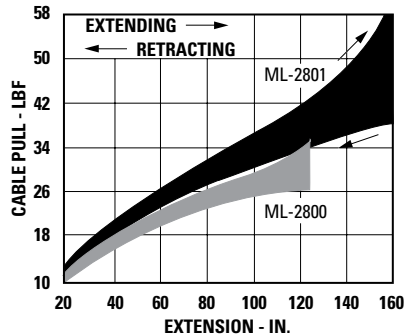
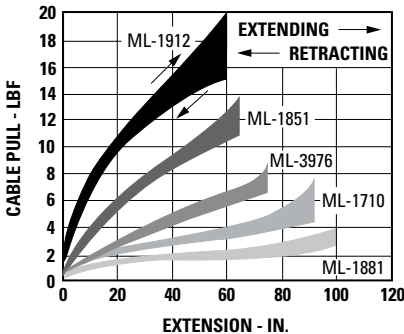
\* Square clearance hole thru for mounting on square stud.

Δ This reel has three Ø.251 holes equally spaced on a Ø5.500 BC through flanges on both sides for prewind purpose.

Catalog Number **	A Square	B	C	Thread
<b>Square Stud</b>				
A 3C53-P11404	5/16	1-9/32	1-1/32	1/4-20
A 3C53-P10152	7/16	1-29/32	1-21/32	3/8-16



\*\* To be discontinued when present stock is depleted.



Charts are for reference only