

FRACTIONAL H.P. V-BELTS



OIL & HEAT RESISTANT
 STATIC DISSIPATING

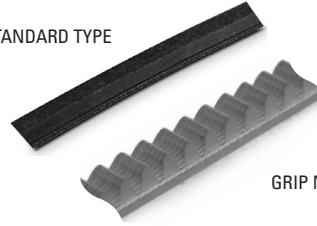
PHONE: 516.328.3300 • FAX: 516.326.8827 • WWW.SDP-SI.COM

► **MATERIAL:**
 Reinforced Rubber

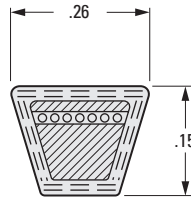
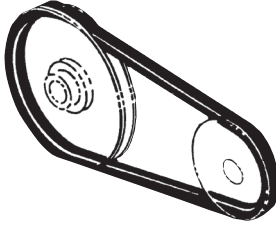


Standard or Grip Notch type belts will be supplied at SDP option.

STANDARD TYPE



GRIP NOTCH TYPE



INCH COMPONENT

Catalog Number	Outside Length (Ref.)	Pitch Length
A 6R12-2L100	10	9.6
A 6R12-2L110	11	10.6
A 6R12-2L120	12	11.6
A 6R12-2L140	14	13.6
A 6R12-2L150	15	14.6
A 6R12-2L160	16	15.6
A 6R12-2L180	18	17.6
A 6R12-2L200	20	19.6
A 6R12-2L220	22	21.6
A 6R12-2L240	24	23.6
A 6R12-2L270	27	26.6
A 6R12-2L280	28	27.6
A 6R12-2L285	28-1/2	28.1
A 6R12-2L290	29	28.6
A 6R12-2L300	30	29.6
A 6R12-2L320	32	31.6
A 6R12-2L325	32-1/2	32.1

FOR 1/4 V-BELTS
 MOLDED & MOLDED WITH INSERT

PHONE: 516.328.3300 • FAX: 516.326.8827 • WWW.SDP-SI.COM

> MATERIAL:

- Fig. 1 - Nylon
- Fig. 2 - Body - Nylon
 Hub - Aluminum

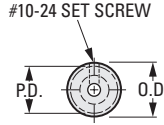
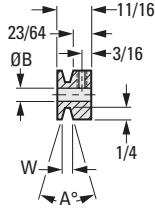


Fig. 1

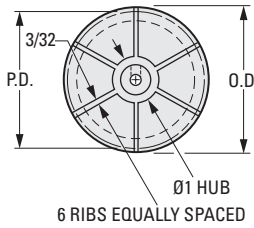
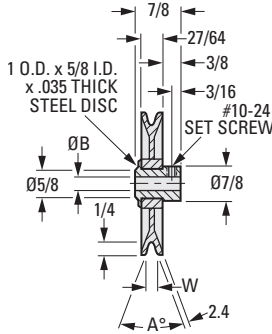


Fig. 2

INCH COMPONENT

Catalog Number	P.D.	O.D.	B Bore +.001 -.000	W Width	A° Angle
Fig. 1 Nylon					
A 6T10-0121008	.9	1.0	.2505	.240	32°
A 6T10-0121010	.9	1.0	.313	.240	32°
Fig. 2 Body - Nylon, Hub - Aluminum					
A 6Z10-0121508	1.4	1.5	.2505	.243	34°
A 6Z10-0121510	1.4	1.5	.313	.243	34°
A 6Z10-0121512	1.4	1.5	.3755	.243	34°
A 6Z10-0121516	1.4	1.5	.5005	.243	34°
A 6Z10-0122008	1.9	2.0	.2505	.246	36°
A 6Z10-0122010	1.9	2.0	.313	.246	36°
A 6Z10-0122012	1.9	2.0	.3755	.246	36°
A 6Z10-0122016	1.9	2.0	.5005	.246	36°
A 6Z10-0122508	2.4	2.5	.2505	.246	36°
A 6Z10-0122510	2.4	2.5	.313	.246	36°
A 6Z10-0122512	2.4	2.5	.3755	.246	36°
A 6Z10-0122516	2.4	2.5	.5005	.246	36°
A 6Z10-0123008	2.9	3.0	.2505	.250	38°
A 6Z10-0123010	2.9	3.0	.313	.250	38°
A 6Z10-0123012	2.9	3.0	.3755	.250	38°
A 6Z10-0123016	2.9	3.0	.5005	.250	38°

Continued on the next page

COMPANION PULLEYS

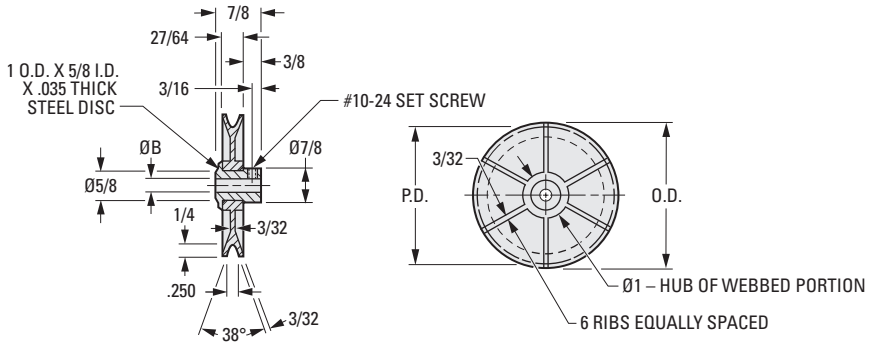


FOR 1/4 V-BELTS
MOLDED WITH INSERT

PHONE: 516.328.3300 • FAX: 516.326.8827 • WWW.SDP-SI.COM



MATERIAL:
Body - Nylon
Hub - Aluminum



INCH COMPONENT

Catalog Number	P.D.	O.D.	B Bore +.001 -.000
A 6Z10-0123508	3.4	3.5	.2505
A 6Z10-0123510	3.4	3.5	.313
A 6Z10-0123512	3.4	3.5	.3755
A 6Z10-0123516	3.4	3.5	.5005
A 6Z10-0124008	3.9	4.0	.2505
A 6Z10-0124010	3.9	4.0	.313
A 6Z10-0124012	3.9	4.0	.3755
A 6Z10-0124016	3.9	4.0	.5005
A 6Z10-0124508	4.4	4.5	.2505
A 6Z10-0124510	4.4	4.5	.313
A 6Z10-0124512	4.4	4.5	.3755
A 6Z10-0124516	4.4	4.5	.5005
A 6Z10-0125008	4.9	5.0	.2505
A 6Z10-0125010	4.9	5.0	.313
A 6Z10-0125012	4.9	5.0	.3755
A 6Z10-0125016	4.9	5.0	.5005
A 6Z10-0126008	5.9	6.0	.2505
A 6Z10-0126010	5.9	6.0	.313
A 6Z10-0126012	5.9	6.0	.3755
A 6Z10-0126016	5.9	6.0	.5005

Continued from the previous page