



0 10

Catalog Series	Unique Features	Material	Bore	Pages
 <b>S57PY5MSU...</b>	Single, Miniature, Zero Backlash	303 Stainless Steel Body, 440 Stainless Steel Balls	Solid 2.5 to 6	7-4
 <b>S57PY5MDU...</b>	Double, Miniature, Zero Backlash	303 Stainless Steel Body, 440 Stainless Steel Balls	2.5 to 6	7-4
 <b>S57PY4MSFU...</b>	Single, Inverted Design, Zero Backlash	303 Stainless Steel Body, 440 Stainless Steel Balls	5 to 14	7-5
 <b>S57PY4MDFU...</b>	Double, Inverted Design, Zero Backlash	303 Stainless Steel Body, 440 Stainless Steel Balls	5 to 14	7-5
 <b>A 5Y 8MDM...</b>	Single, Short Series, Solid and Bored	303 Stainless Steel	Solid 6 to 12	7-6
 <b>A 5Y 8MDU...</b>	Single, Step Down Series	303 Stainless Steel	3 to 6	7-6
 <b>A 5Q 8MD...</b>	Single, Standard Design, Solid and Bored	Alloy Steel	Solid 4 to 14	7-7
 <b>A 5Y 8MDGZ...</b>	Single, Small Series	303 Stainless Steel	3 to 5	7-8



0 10

- I
- R
- T
- 1
- 2
- 3
- 4
- 5
- 6
- 7**
- 8
- 9
- 10
- 11
- 12
- 13
- 14
- 15
- A

Catalog Series	Unique Features	Material	Bore	Pages
 <b>A 5Q 8MDGZ...</b>	Single, Small Series	4140 Alloy Steel	3 to 5	7-8
 <b>A 5Q 8MDM...</b>	Single, Solid and Bored	Alloy Steel	Solid 6 to 12	7-8
 <b>A 5Q 8MDD...</b>	Double, Slow Speed	Alloy Steel	Solid 4 to 14	7-9
 <b>A 5Q 8MDG...</b>	Double	Carbon Steel Unhardened	6 to 20	7-10
 <b>A 5X 8MSE...</b>	Double, Telescoping, Heat- and Corrosion-Resistant	300 Series SS Joints, 416 Stainless Steel Spline	6 to 14	7-11
 <b>S57PY5MDUT...</b>	Double, Telescoping, Miniature, Ball Spline, Zero Backlash	303 Stainless Steel Body, 440 Stainless Steel Balls	2.5 to 6	7-12
 <b>S57PY4MDFUT...</b>	Double, Telescoping, Inverted Design, Ball Spline, Zero Backlash	440 Stainless Steel Body, 440 Stainless Steel Balls	5 to 14	7-12






0 10

Catalog Series	Unique Features	Material	Bore	Pages
 <b>A 5M 8MD...</b>	Single, Molded, Economy Series	Acetal	3 to 10	7-14
 <b>A 5M 8MDD...</b>	Double, Molded, Economy Series	Acetal	3 to 10	7-14
 <b>A 5T 8MD...</b>	Single, Molded, Brass Spider	Acetal Body, Brass Spider	3 to 10	7-15
 <b>A 5Z 8MD...</b>	Single, Molded, Brass Spider & Inserts	Acetal Body, Brass Spider & Inserts	2 to 8	7-15
 <b>A 5T 8MDD...</b>	Double, Molded, Brass Spider	Acetal Body, Brass Spider	3 to 10	7-16
 <b>A 5Z 8MDD...</b>	Double, Molded, Brass Spider and Inserts	Acetal Body, Brass Spider and Inserts	2 to 8	7-16
 <b>A 5M 8MSE...</b>	Double, Telescoping, Molded, Economy Series	Acetal	4, 6, 8	7-17
 <b>A 5T 8MSE3...</b>	Double, Telescoping, Molded, Brass Spider, 9.5 O.D.	Acetal Body & Extension, Brass Spider	4, 6	7-18



0 10

Catalog Series	Unique Features	Material	Bore	Pages
 <p><b>A 5Z 8MSE3...</b></p>	Double, Telescoping, Molded, Brass Spider and inserts, 9.5 O.D.	Acetal Body and Extension, Brass Spider and Inserts	3, 4	7-18
 <p><b>A 5T 8MSE4...</b></p>	Double, Telescoping, Molded, Brass Spider, 12.7 O.D.	Acetal Body and Extension, Brass Spider	6, 8	7-19
 <p><b>A 5Z 8MSE4...</b></p>	Double, Telescoping, Molded, Brass Spider and Inserts, 12.7 O.D.	Acetal Body and Extension, Brass Spider and Inserts	4, 6	7-19
 <p><b>A 5Z 8MSEB...</b></p>	Double, Telescoping, Molded, Brass Spider Inserts and Extension	Acetal Body, Brass Spider, Inserts and Extension	2 to 8	7-20

I

R

T

1

2

3

4

5

6

**7**

8

9

10

11

12

13

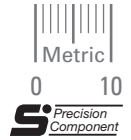
14

15

A

SINGLE & DOUBLE JOINT  
ZERO BACKLASH

PHONE: 516.328.3300 • FAX: 516.326.8827 • WWW.SDP-SI.COM



**> MATERIAL:**

**Body:** 303 Stainless Steel  
**Balls:** 440 Stainless Steel

**> LUBRICATION:**

Dry Film Plus Oil Suspension

**> FEATURES:**

Zero backlash through use of precision balls and burnished sockets  
Sealed-in lubrication  
Lightweight  
Low inertia

**> SPECIFICATIONS:**

**Torque Ratings** - For static conditions with in-line loading, maximum load being one which causes joint to yield.

**Max. Operating Angle** - Fig. 1: 30° @ 4000 rpm

Fig. 2: 60° @ 4000 rpm

Set screws available on special order.

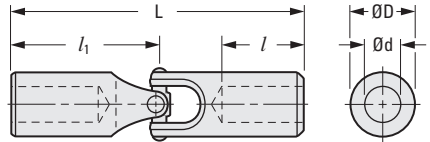


Fig. 1

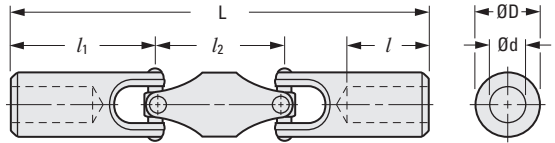


Fig. 2

**METRIC COMPONENT**

Catalog Number	D Dia.	d Bore +0.013 0	l Bore Depth	l <sub>1</sub> End Unit	l <sub>2</sub> Center	L Length	Torque N • m
<b>Fig. 1 Single Joint</b>							
S57PY5MSU0005	4.76	Solid	—	12.7	—	25.4	0.11
S57PY5MSU0205	4.76	2.5	8.7	12.7	—	25.4	0.11
S57PY5MSU0305	4.76	3	8.7	12.7	—	25.4	0.11
S57PY5MSU0407	7.15	4	11.1	17.5	—	34.9	0.45
S57PY5MSU0507	7.15	5	11.1	17.5	—	34.9	0.45
S57PY5MSU0510	9.53	5	12.7	22.2	—	44.5	1.8
S57PY5MSU0610	9.53	6	12.7	22.2	—	44.5	1.8
<b>Fig. 2 Double Joint</b>							
S57PY5MDU0205	4.76	2.5	8.7	12.7	12.7	38.1	0.11
S57PY5MDU0305	4.76	3	8.7	12.7	12.7	38.1	0.11
S57PY5MDU0407	7.15	4	11.1	17.5	15.9	50.8	0.45
S57PY5MDU0507	7.15	5	11.1	17.5	15.9	50.8	0.45
S57PY5MDU0510	9.53	5	12.7	22.2	19.1	63.5	1.8
S57PY5MDU0610	9.53	6	12.7	22.2	19.1	63.5	1.8

# MOLDED UNIVERSAL JOINTS • TELESCOPING

# SDP/SI

WITH BRASS SLIDE EXTENSION  
ELECTRICALLY INSULATING

PHONE: 516.328.3300 • FAX: 516.326.8827 • WWW.SDP-SI.COM



0 10



► **MATERIAL:**

- Body - Molded Acetal
- Spider & Insert - Nickel Plated Brass
- Tube - Brass



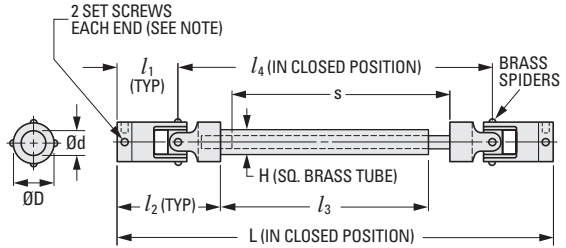
► **MAX. OPERATING TEMPERATURE:**

+85°C

► **SPECIFICATION:**

- Max. Angular Displacement: 90°
- Max. Recommended Extension:  $\frac{l_3}{2}$

Shorter or longer lengths available on special order.



### METRIC COMPONENT

Catalog Number	D Dia.	d Bore +0.025 0	Bore Depth (Typ)	l <sub>1</sub>	l <sub>2</sub>	Length Closed		l <sub>3</sub>	s	H SQ.	Set Screw
						L	l <sub>4</sub>				
A 5Z 8MSEB202	6.3	*2	9.9	13.5	23	82.6	55.6	36.5	40.5	3.2	M3
A 5Z 8MSEB203	6.3	*3	9.9	13.5	23	82.6	55.6	36.5	40.5	3.2	M3
A 5Z 8MSEB303	9.5	*3	13.2	19.1	33.3	112.7	74.6	46	53.2	4	M3
A 5Z 8MSEB304	9.5	4	13.2	19.1	33.3	112.7	74.6	46	53.2	4	M3
A 5Z 8MSEB404	12.7	*4	16	23	40.9	152.5	106.5	70.6	78.6	4.8	M3
A 5Z 8MSEB406	12.7	6	16	23	40.9	152.5	106.5	70.6	78.6	4.8	M3
A 5Z 8MSEB506	15.9	6	21.8	33.7	60.3	203.2	135.8	82.6	96	6.4	M4
A 5Z 8MSEB508	15.9	8	21.8	33.7	60.3	203.2	135.8	82.6	96	6.4	M4

\*NOTE: One set screw each end.