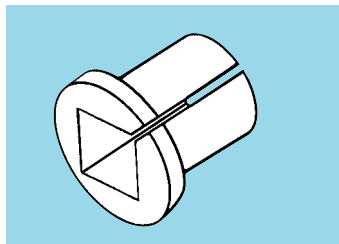
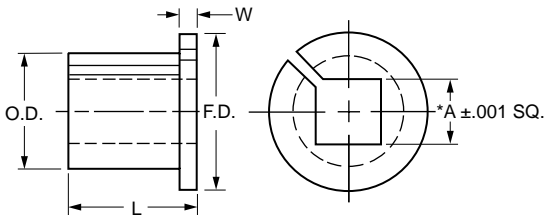




INCH

Square Hole Bushings



Catalog Number	Tool Bit Size	A Square	L Length	O.D.	Flange Diameter	W Flange Width
A 7C18-03	3/16	.1915	3/4	.375	1/2	1/16
A 7C18-04	1/4	.255	1	.468	9/16	1/16
A 7C18-05	5/16	.3175		.562	11/16	
A 7C18-06	3/8	.380		.656	3/4	
A 7C18-07	7/16	.4425	1-1/4	.750	7/8	1/16
A 7C18-08	1/2	.505		.812	7/8	
A 7C18-10	5/8	.630	1-1/2	1.000	1-1/8	1/16
A 7C18-12	3/4	.755		1.187	1-3/8	1/8
A 7C18-14	7/8	.880	1-3/4	1.375	1-1/2	1/8
A 7C18-16	1	1.008	2	1.562	1-5/8	1/8
A 7C18-18	1-1/8	1.130		1.750	1-7/8	
A 7C18-19	1-3/16	1.190		1.812	2	
A 7C18-20	1-1/4	1.260		2.000	2-1/8	

FEATURES:

- Fits ANY mating size collet, or 3-jawed chucks.
- Provides good concentricity without time-consuming adjustments.
- Costs a fraction of the price of square collets.

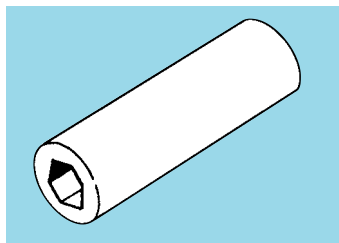
MATERIAL: 4140 Steel
HARDNESS: Rc 40-45

* Before slotting.



INCH

Hex Hole Sleeves



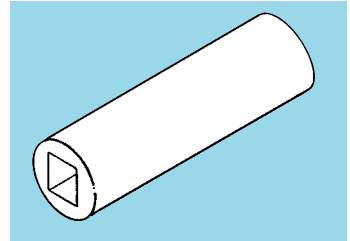
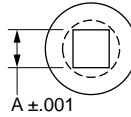
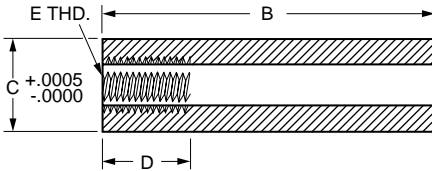
MATERIAL: Carbon Steel AISI C1117, May be Case Hardened

Catalog Number	H ±.001 Hex Size	L Length	O.D. (Stock)
A 7C20-02	.128	3/4	1/4
A 7C20-03	.190	1-1/2	3/8
A 7C20-04	.253	2	1/2
A 7C20-05	.315	2-1/4	9/16
A 7C20-06	.378	2-1/2	5/8
A 7C20-07	.440	2-5/8	3/4
A 7C20-08	.503	2-3/4	13/16
A 7C20-10	.628	3-1/4	1



■ PLAIN

■ THREADED



Square Hole Sleeves are available in two styles: One with a tapped hole at one end, to receive a back-up screw, which we supply; the other with a squared hole end to end without thread or back-up screw.

MATERIAL: C.R.S. 1117 (May Be Case Hardened)

CONCENTRICITY: .003 T.I.R. Between O.D. & Square Hole

Catalog Number	Tool Bit Size	A Square	B Length	C O.D.	D Thread Depth	E Thread
PLAIN						
A 7C19-P012	1/8	.128	3/4	.2187	—	—
A 7C19-P018	3/16	.1915	1-1/2	.3125		
A 7C19-P025	1/4	.255	2	.4375		
A 7C19-P031	5/16	.3175	2-1/4	.500		
A 7C19-P037	3/8	.380	2-1/2	.5937		
A 7C19-P043	7/16	.4425	2-5/8	.6875		
A 7C19-P050	1/2	.505	2-3/4	.7812		
A 7C19-P062	5/8	.630	3-1/4	.9375		
A 7C19-P075	3/4	.755	4	1.125		
A 7C19-P087	7/8	.880	5	1.3125		
A 7C19-P100	1	1.008	5	1.500		
A 7C19-P125	1-1/4	1.260	5	2.000		
THREADED						
A 7C19-T012	1/8	.128	3/4	.2187	1/4	#10 - 32
A 7C19-T018	3/16	.1915	1-1/2	.3125	7/16	1/4 - 28
A 7C19-T025	1/4	.255	2	.4375	1/2	5/16 - 24
A 7C19-T031	5/16	.3175	2-1/4	.500	9/16	3/8 - 24
A 7C19-T037	3/8	.380	2-1/2	.5937	5/8	1/2 - 20
A 7C19-T043	7/16	.4425	2-5/8	.6875		
A 7C19-T050	1/2	.505	2-3/4	.7812	5/8	5/8 - 18
A 7C19-T062	5/8	.630	3-1/4	.9375	1	3/4 - 16
A 7C19-T075	3/4	.755	4	1.125	1	1 - 14
A 7C19-T087	7/8	.880	5	1.3125		
A 7C19-T100	1	1.008	5	1.500	1-1/2	1-1/8 - 12
A 7C19-T125	1-1/4	1.260	5	2.000		1-1/2 - 12

NOTE: Sleeves also may be ordered with .015 grinding stock on O.D., if desired. Add "G" to catalog number. Tolerance is same as on standard O.D.