

SET SCREW HUB

PHONE: 516.328.3300 • FAX: 516.326.8827 • WWW.SDP-SI.COM

**> MATERIAL:**

**Hubs** - 06, 09 & 13 Series - Brass, Chromate Finish  
 15 Thru 41 Series - Aluminum, Clear Anodized  
**Torque Disc** - Acetal



**> MISALIGNMENT COMPENSATION:**

**Max. Angular Offset:** .5°

**> OPERATING TEMPERATURE:**

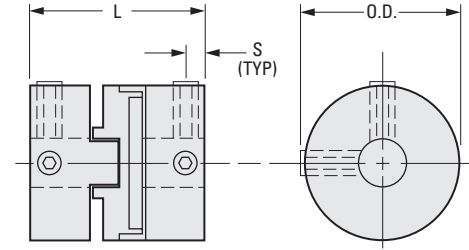
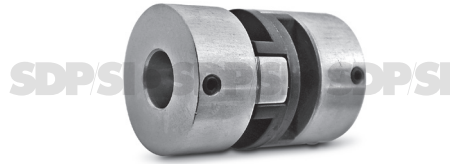
-40°F to +185°F

**> FEATURES:**

Easy assembly. Corrosion-resistant.  
 Lubrication-free. Electrical isolation.  
 Low inertia.

**> MAX. SERVICE TORQUE:**

.5 lbf in. for 06 series  
 1.8 lbf in. for 09 series  
 4.4 lbf in. for 13 series  
 6.6 lbf in. for 15 series  
 15.0 lbf in. for 19 series  
 35.0 lbf in. for 25 series  
 80.0 lbf in. for 33 series  
 150.0 lbf in. for 41 series



**> BUILD YOUR OWN COUPLING:**

**For Different Bore Combinations:** Select hubs and corresponding disc within the same series.

**For Hubs with the Same Bore:** Select the "Complete Coupling"

△Coupling supplied as individual components

Set Screw & Split Hubs can be interchanged if discs from the same size O.D. are selected.

INCH COMPONENT			O.D.	Bore +.0012 -.0000	L Length	Max. Shaft Depth	Set* Screw	Max. Lateral Offset	S
Complete Coupling <sup>△</sup>	Hub Only	Disc Only							
A 5Z15-000604	A 5B15-000604	A 5P15-0006	.25	.125	.50	.15	#4-40	.004	5/64
A 5Z15-000904	A 5B15-000904	A 5P15-0009	.37	.125	.50	.15	#4-40	.004	5/64
A 5Z15-000906	A 5B15-000906			.1875					
A 5Z15-001306	A 5B15-001306	A 5P15-0013	.50	.1875	.63	.17	#4-40 #6-32	.004	3/32
A 5Z15-001308	A 5B15-001308			.250					
A 5Z15-001506	A 5A15-001506	A 5P15-0015	.59	.1875	1.02	.32	#6-32	.004	3/32
A 5Z15-001508	A 5A15-001508			.250					
A 5Z15-001906	A 5A15-001906	A 5P15-0019	.75	.1875	.87	.25	#6-32	.008	3/32
A 5Z15-001908	A 5A15-001908			.250					
A 5Z15-001910	A 5A15-001910			.3125					
A 5Z15-002508	A 5A15-002508	A 5P15-0025	1.00	.250	1.12	.34	#8-32	.008	1/8
A 5Z15-002510	A 5A15-002510			.3125					
A 5Z15-002512	A 5A15-002512			.375					
A 5Z15-003310	A 5A15-003310	A 5P15-0033	1.31	.3125	1.89	.51	#8-32	.008	1/8
A 5Z15-003312	A 5A15-003312			.375					
A 5Z15-003316	A 5A15-003316			.500					
A 5Z15-004116	A 5A15-004116	A 5P15-0041	1.62	.500	2.00	.66	#10-24	.010	11/64
A 5Z15-004120	A 5A15-004120			.625					

\* 06 & 09 series have only one set screw at each end.

