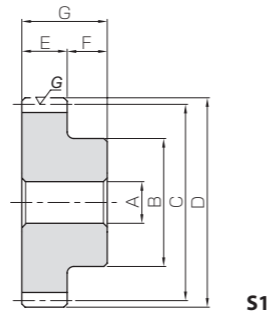


Specifications	
Precision grade	JIS grade N6 (JIS B1702-1: 1998)
Gear teeth	Standard full depth
Pressure angle	20°
Material	SCM440
Heat Treatment	Thermal refined, gear teeth induction hardened
Tooth hardness	50 to 60HRC
Surface treatment	Black oxide coated except for teeth



Recommended mating rack



KKRGF-H/KKRGFD-H  
Hardened Ground Racks

Please see Page 200 for more details.

Catalog Number	Module	No. of teeth	Shape	Bore							Total Length															
				A <sub>H7</sub>	B	C	D	E	F	G																
KKSG1-20 KKSG1-25 KKSG1-30 KKSG1-32 KKSG1-36 KKSG1-40	m1	20 25 30 32 36 40	S1	6 8 8 10 10 10	15 20 25 25 30 35	20 25 30 32 36 40	22 27 32 34 38 42	10	10	20																
KKSG1.5-20 KKSG1.5-25 KKSG1.5-30 KKSG1.5-32 KKSG1.5-36 KKSG1.5-40		m1.5		20 25 30 32 36 40	10 10 15 15 15 15	24 30 35 40 45 50	30 37.5 45 48 54 60				33 40.5 48 51 57 63	15	14	29												
KKSG2-20 KKSG2-25 KKSG2-30 KKSG2-32 KKSG2-36 KKSG2-40				m2	20 25 30 32 36 40	15 15 15 18 18 18	30 40 50 55 65 70				40 50 60 64 72 80				44 54 64 68 76 84	20	16	36								
KKSG2.5-20 KKSG2.5-25 KKSG2.5-30 KKSG2.5-32 KKSG2.5-36 KKSG2.5-40					m2.5	20 25 30 32 36 40	15 20 20 20 20 20				40 50 65 70 80 90				50 62.5 75 80 90 100				55 67.5 80 85 95 105	25	18	43				
KKSG3-20 KKSG3-25 KKSG3-30 KKSG3-32 KKSG3-36 KKSG3-40						m3	20 25 30 32 36 40				15 20 20 25 25 25				50 65 80 85 90 110				60 75 90 96 108 120				66 81 96 102 114 126	30	20	50

[Caution on Product Characteristics] ① The allowable torques shown in the table are calculated values according to the assumed usage conditions. Please see Page 24 for more details.  
② The backlash values shown in the table are the theoretical values for the backlash in the normal direction of a pair of identical gears in mesh.

Allowable torque (N·m)		Allowable torque (kgf·m)		Backlash (mm)	Weight (kg)	Catalog Number								
Bending strength	Surface durability	Bending strength	Surface durability											
10.3 13.9 17.6 19.1 22.1 25.1	5.48 9.16 14.0 16.2 21.3 27.0	1.05 1.42 1.80 1.95 2.25 2.56	0.56 0.93 1.43 1.66 2.17 2.75	0.08~0.16	0.034 0.055 0.086 0.089 0.12 0.16	KKSG1-20 KKSG1-25 KKSG1-30 KKSG1-32 KKSG1-36 KKSG1-40								
34.8 47.0 59.5 64.5 74.6 84.7	18.5 31.0 47.4 55.0 71.9 91.3	3.55 4.80 6.06 6.57 7.60 8.64	1.89 3.16 4.83 5.60 7.34 9.31			0.08~0.16	0.12 0.19 0.25 0.31 0.40 0.51	KKSG1.5-20 KKSG1.5-25 KKSG1.5-30 KKSG1.5-32 KKSG1.5-36 KKSG1.5-40						
82.6 111 141 153 177 201	44.0 73.5 112 131 171 217	8.42 11.4 14.4 15.6 18.0 20.5	4.48 7.50 11.5 13.3 17.4 22.1					0.10~0.20	0.24 0.42 0.64 0.73 0.98 1.20	KKSG2-20 KSG2-25 KSG2-30 KSG2-32 KSG2-36 KSG2-40				
161 218 275 298 345 392	86.0 144 220 255 335 425	16.5 22.2 28.1 30.4 35.2 40.0	8.77 14.7 22.4 26.0 34.1 43.3							0.10~0.20	0.50 0.77 1.23 1.42 1.85 2.33	KSG2.5-20 KSG2.5-25 KSG2.5-30 KSG2.5-32 KSG2.5-36 KSG2.5-40		
279 376 476 516 597 678	149 249 381 442 579 736	28.4 38.4 48.5 52.6 60.8 69.1	15.2 25.4 38.9 45.1 59.1 75.0									0.10~0.20	0.90 1.44 2.16 2.40 2.96 3.96	KSG3-20 KSG3-25 KSG3-30 KSG3-32 KSG3-36 KSG3-40

[Caution on Secondary Operations] ① Please read "Cautions on Performing Secondary Operations" (Page 26) when performing modifications and/or secondary operations for safety concerns. KHK Quick-Mod Gears, the KHK system for quick modification of KHK stock gears, is also available.  
② Due to the gear teeth being induction hardened, no secondary operations can be performed on tooth areas including the bottom land (approx. 2 to 3 mm).

Spur Gears  
Helical Gears  
Internal Gears  
Racks  
CP Racks & Pinions  
Miter Gears  
Bevel Gears  
Screw Gears  
Worm Gear Pairs  
Bevel Gearboxes  
Other Products

Spur Gears  
Helical Gears  
Internal Gears  
Racks  
CP Racks & Pinions  
Miter Gears  
Bevel Gears  
Screw Gears  
Worm Gear Pairs  
Bevel Gearboxes  
Other Products