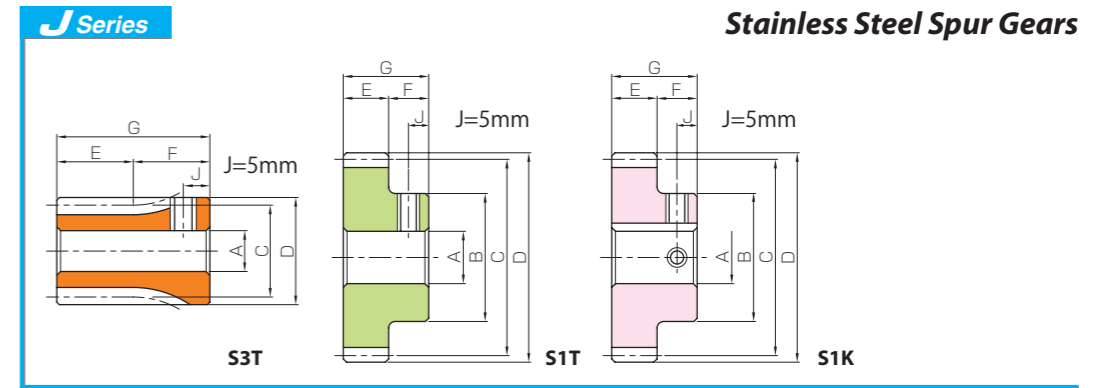
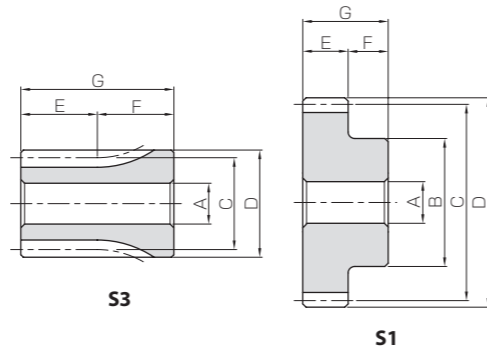




Specifications	
Precision grade	JIS grade N8 (JIS B1702-1: 1998)*
Gear teeth	Standard full depth
Pressure angle	20°
Material	SUS303
Heat Treatment	—
Tooth hardness	(less than 187HB)

* The precision grade of J Series products is equivalent to the value shown in the table.



Catalog Number	No. of teeth	Shape	Bore		Pitch dia.	Outside dia.	Face width	Hub width	Total Length	Allowable torque (N-m)		Allowable torque (kgf-m)		Backlash (mm)	Weight (kg)
			A _{H7}	B						Bending strength	Surface durability	Bending strength	Surface durability		
KSUS1-15	15	S3	8	17	15	17	10	10	20	30	2.04	0.12	0.21	0.013	0.08~0.18
KSUS1-16	16			18	16	18					2.26	0.14	0.23	0.015	
KSUS1-18	18			20	18	20					2.71	0.18	0.28	0.019	
KSUS1-20	20			16	20	22					3.18	0.23	0.32	0.024	
KSUS1-22	22			18	22	24					3.65	0.29	0.37	0.029	
KSUS1-24	24	S1	10	20	24	26	10	20	20	20	4.13	0.35	0.42	0.036	0.08~0.18
KSUS1-25	25			20	25	27					4.37	0.38	0.45	0.039	
KSUS1-28	28			23	28	30					5.11	0.48	0.52	0.049	
KSUS1-30	30			25	30	32					5.60	0.56	0.57	0.057	
KSUS1-32	32			26	32	34					6.11	0.64	0.62	0.066	
KSUS1-35	35			26	35	37					6.87	0.78	0.70	0.079	
KSUS1-36	36			28	36	38					7.12	0.82	0.73	0.084	
KSUS1-40	40			35	40	42					8.15	1.03	0.83	0.11	
KSUS1-42	42			35	42	44					8.66	1.14	0.88	0.12	
KSUS1-45	45			35	45	47					9.44	1.32	0.96	0.13	
KSUS1-48	48	10	10	35	48	50	10	20	20	20	10.2	1.51	1.04	0.15	0.08~0.18
KSUS1-50	50			35	50	52					10.8	1.65	1.10	0.17	
KSUS1-55	55			40	55	57					12.1	2.01	1.23	0.21	
KSUS1-56	56			40	56	58					12.3	2.09	1.26	0.21	
KSUS1-60	60			40	60	62					13.4	2.42	1.37	0.25	
KSUS1-64	64			45	64	66					14.5	2.77	1.47	0.28	
KSUS1-70	70			50	70	72					16.1	3.34	1.64	0.34	
KSUS1-75	75			55	75	77					17.4	3.86	1.77	0.39	
KSUS1-80	80			60	80	82					18.7	4.42	1.91	0.45	
KSUS1-90	90			60	90	92					21.4	5.67	2.19	0.58	
KSUS1-100	100	12	10	60	100	102	10	20	20	20	24.1	7.08	2.46	0.72	0.08~0.18
KSUS1-120	120			60	120	122					29.6	10.4	3.01	1.06	

[Caution on Product Characteristics] ① The allowable torques shown in the table are calculated values according to the assumed usage conditions. Please see Page 24 for more details.

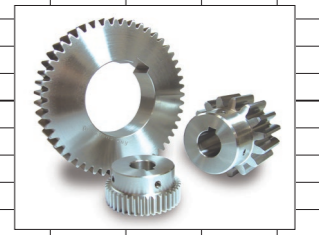
② The backlash values shown in the table are the theoretical values for the backlash in the normal direction of a pair of identical gears in mesh.

[Caution on Secondary Operations] ① Please read "Cautions on Performing Secondary Operations" (Page 26) when performing modifications and/or secondary operations for safety concerns.

② Avoid performing secondary operations that narrow the tooth width, as it affects precision and strength.

To order J Series products, please specify: **Catalog No. + J + BORE.**

Bore H7	* The product shapes of J Series items are identified by background color.																
	8	10	12	14	15	16	17	18	19	20	22	25	28	30	32	35	
Keyway Js9	4x1.8		5x2.3				6x2.8				8x3.3		10x3.3				
Screw size	M5			M4				M5				M6		M8			
Catalog Number	M5	M4				M5				M6		M8					
KSUS1-15 J BORE	S3T																
KSUS1-16 J BORE	S3T																
KSUS1-18 J BORE	S3T																
KSUS1-20 J BORE	S1T																
KSUS1-22 J BORE	S1T																
KSUS1-24 J BORE	S1T																
KSUS1-25 J BORE	S1T																
KSUS1-28 J BORE	S1T	S1K	S1K														
KSUS1-30 J BORE	S1T	S1K	S1K														
KSUS1-32 J BORE	S1T	S1K	S1K	S1K													
KSUS1-35 J BORE	S1T	S1K	S1K	S1K													
KSUS1-36 J BORE	S1T	S1K	S1K	S1K	S1K	S1K											
KSUS1-40 J BORE		S1K	S1K	S1K	S1K	S1K	S1K	S1K	S1K								
KSUS1-42 J BORE		S1K	S1K	S1K	S1K	S1K	S1K	S1K	S1K	S1K							
KSUS1-45 J BORE		S1K	S1K	S1K	S1K	S1K	S1K	S1K	S1K	S1K							
KSUS1-48 J BORE		S1K	S1K	S1K	S1K	S1K	S1K	S1K	S1K	S1K							
KSUS1-50 J BORE		S1K	S1K	S1K	S1K	S1K	S1K	S1K	S1K	S1K							
KSUS1-55 J BORE		S1K	S1K	S1K	S1K	S1K	S1K	S1K	S1K	S1K	S1K						
KSUS1-56 J BORE		S1K	S1K	S1K	S1K	S1K	S1K	S1K	S1K	S1K	S1K	S1K					
KSUS1-60 J BORE		S1K	S1K	S1K	S1K	S1K	S1K	S1K	S1K	S1K	S1K	S1K	S1K				
KSUS1-64 J BORE		S1K	S1K	S1K	S1K	S1K	S1K	S1K	S1K	S1K	S1K	S1K	S1K				
KSUS1-70 J BORE		S1K	S1K	S1K	S1K	S1K	S1K	S1K	S1K	S1K	S1K	S1K	S1K	S1K			
KSUS1-75 J BORE		S1K	S1K	S1K	S1K	S1K	S1K	S1K	S1K	S1K	S1K	S1K	S1K	S1K	S1K		
KSUS1-80 J BORE		S1K	S1K	S1K	S1K	S1K	S1K	S1K	S1K	S1K	S1K	S1K	S1K	S1K	S1K	S1K	
KSUS1-90 J BORE		S1K	S1K	S1K	S1K	S1K	S1K	S1K	S1K	S1K	S1K	S1K	S1K	S1K	S1K	S1K	
KSUS1-100 J BORE			S1K	S1K	S1K	S1K	S1K	S1K	S1K	S1K	S1K	S1K	S1K	S1K	S1K	S1K	
KSUS1-120 J BORE			S1K	S1K	S1K	S1K	S1K	S1K	S1K	S1K	S1K	S1K	S1K	S1K	S1K	S1K	



[Caution on J series] ① As available-on-request products, these require a lead-time for shipping within 2 working days (excludes the day ordered), after placing an order.

② Number of products we can process for one order is 1 to 20 units. For quantities of 21 or more pieces, we need to quote price and lead time.

③ Keyways are made according to JIS B1301 standards, Js9 tolerance.

④ Certain products which would otherwise have a very long tapped hole are counterbored to reduce the length of the tap.

⑤ For products having a tapped hole, a set screw is included.

⑥ When using S3T and S1T set screws for fastening gears to a shaft, only use this method for applications with light load usage. For secure fastening, please use dowel pins in combination.