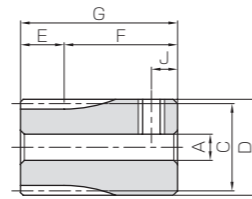


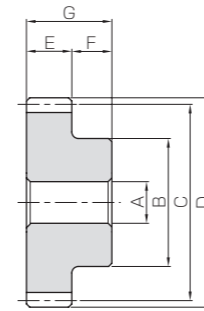


Specifications	
Precision grade	JIS grade N8 (JIS B1702-1: 1998)*
Gear teeth	Standard full depth
Pressure angle	20°
Material	Free cutting brass (C3604)
Heat Treatment	—
Tooth hardness	(80HV or more)

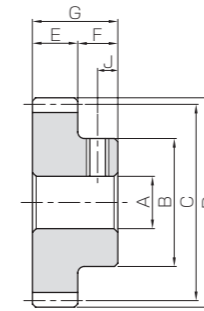
\* The precision grade of products with a module of less than 0.8 is equivalent to the value shown in the table.



S3T



S1



S1T

Catalog Number	Module	No. of teeth	Shape	Bore				Face width	Hub width	Total Length	Keyway
				A <sub>H7</sub>	B	C	D				
KBSS0.5-15A	m0.5	15	S3T	3	8.5	7.5	8.5	3	11	14	—
KBSS0.5-16A		16			9	8	9				
KBSS0.5-18A		18			10	9	10				
KBSS0.5-20		20	S1	4	8.5	10	11	3	7	10	
KBSS0.5-20A					11	14	14				
KBSS0.5-20B					11	14	14				
KBSS0.5-22A		22	S1T	3	9	11	12	3	7	10	
KBSS0.5-24B					4	10	12				
KBSS0.5-25		25	S1	4	11	12.5	13.5	3	7	10	
KBSS0.5-26A		26	S1T	3	10	13	14				
KBSS0.5-27A		27			S1T	3	10	13.5	14.5	3	
KBSS0.5-28A		28	S1T	3			12	14	15		
KBSS0.5-30		30			S1	4	13	15	16	3	
KBSS0.5-30A			12								
KBSS0.5-30B			12								
KBSS0.5-30C			12								
KBSS0.5-38A		38	S1T	4	16	19	20	3	7	10	
KBSS0.5-40		40	S1	4	17	20	21				
KBSS0.5-40B	5				18	21					
KBSS0.5-50A	50	S1T	4	22	25	26	3	7	10		
KBSS0.5-50B				5	26	26					
KBSS0.5-60A	60	S1T	5	28	30	31	3	7	10		
KBSS0.5-60B				6	31	31					
KBSS0.5-70A	70	S1T	5	28	35	36	3	7	10		
KBSS0.5-80A	80	S1T	5	28	40	41					
KBSS0.5-80B				6	41	41					
KBSS0.8-15A	m0.8	15	S1T	4	9	12	13.6	3	8	12	—
KBSS0.8-16A		16			10	12.8	14.4				
KBSS0.8-20		20	S1	5	13.5	16	17.6	3	8	12	
KBSS0.8-20A					4						
KBSS0.8-20B					5						
KBSS0.8-22A		22	S1T	5	15	17.6	19.2	3	8	12	
KBSS0.8-24B					5	16	19.2				
KBSS0.8-25		25	S1	5	17	20	21.6	3	8	12	
KBSS0.8-28A		28	S1T	5	18	22.4	24				

- [Caution on Product Characteristics]
- For products having a tapped hole, a set screw is included.
  - The allowable torques shown in the table are calculated values according to the assumed usage conditions. Please see Page 24 for more details.
  - The backlash values shown in the table are the theoretical values for the backlash in the normal direction of a pair of identical gears in mesh.
  - If the bore diameter is less than  $\varphi 4$ , the bore tolerance class is H8. If the bore diameter is  $\varphi 5$  or  $\varphi 6$ , and the hole length (total length) exceeds 3 times the diameter, then the class is also H8.

Socket head screw	Allowable torque (N·m)	Allowable torque (kgf·m)	Backlash (mm)	Weight (kg)	Catalog Number	
						Size
M3	2.5	0.058	0.0059	0~0.10	0.0054	KBSS0.5-15A
		0.065	0.0066		0.0062	KBSS0.5-16A
		0.078	0.0079		0.0079	KBSS0.5-18A
M3	2.5	0.091	0.0093	0~0.10	0.0043	KBSS0.5-20
		0.10	0.011		0.0098	KBSS0.5-20A
					0.0091	KBSS0.5-20B
M3	3.5	0.12	0.012	0~0.10	0.0054	KBSS0.5-22A
		0.12	0.013		0.0063	KBSS0.5-24B
M3	3.5	0.13	0.013	0~0.10	0.0077	KBSS0.5-25
		0.14	0.014		0.0072	KBSS0.5-26A
		0.15	0.015		0.0075	KBSS0.5-27A
M3	3.5	0.16	0.016	0~0.10	0.0097	KBSS0.5-28A
					0.011	KBSS0.5-30
					0.010	KBSS0.5-30A
M3	3.5	0.16	0.016	0~0.10	0.0099	KBSS0.5-30B
					0.0092	KBSS0.5-30C
M3	3.5	0.22	0.022	0~0.10	0.018	KBSS0.5-38A
					0.020	KBSS0.5-40
M4	3.5	0.23	0.024	0~0.10	0.020	KBSS0.5-40B
					0.033	KBSS0.5-50A
M3	3.5	0.31	0.031	0~0.10	0.032	KBSS0.5-50B
					0.052	KBSS0.5-60A
M4	3.5	0.38	0.039	0~0.10	0.051	KBSS0.5-60B
					0.058	KBSS0.5-70A
					0.065	KBSS0.5-80A
M3	4	0.20	0.020	0~0.10	0.065	KBSS0.5-80B
					0.0067	KBSS0.8-15A
M3	4	0.22	0.022	0~0.10	0.0082	KBSS0.8-16A
					0.014	KBSS0.8-20
M3	4	0.31	0.032	0~0.10	0.013	KBSS0.8-20A
					0.012	KBSS0.8-20B
M4	4	0.36	0.036	0~0.10	0.018	KBSS0.8-22A
					0.021	KBSS0.8-24B
M4	4	0.40	0.041	0~0.10	0.021	KBSS0.8-25
					0.024	KBSS0.8-28A
M4	4	0.43	0.043	0~0.10	0.024	KBSS0.8-25
					0.028	KBSS0.8-28A

- [Caution on Secondary Operations]
- Please read "Cautions on Performing Secondary Operations" (Page 26) when performing modifications and/or secondary operations for safety concerns.
  - Avoid performing secondary operations that narrow the tooth width, as it affects precision and strength.
  - When using a product with secondary operations applied, please be careful of runout and deformation as the tooth width is thin.