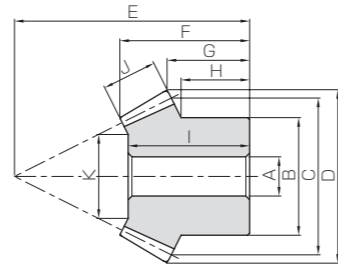
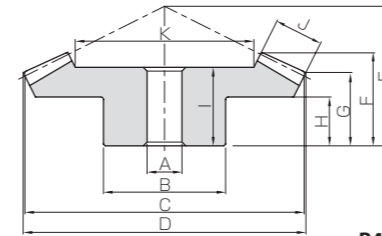




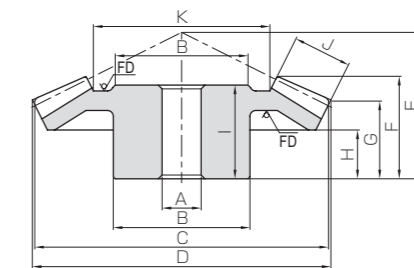
Specifications	
Precision grade	JIS B 1704: 1978 grade 4
Gear teeth	Gleason
Pressure angle	20°
Helix angle	35°
Material	S45C
Heat treatment	Teeth induction hardened
Tooth hardness	50 ~ 60HRC
Surface treatment	Black oxide coating



B3



B4



B5

* FD has die-forged finish.

Catalog No.	Gear ratio	Module	No. of teeth	Direction of spiral	Shape	Bore		Pitch dia.	Outside dia.	Mounting distance	Total length	Crown to back length
						A	B					
KSBS2-3020R KSBS2-2030L	1.5	m2	30	R	B4	12	35	60	61.36	40	26.8	21.02
			20	L	B3	10	30	40	43.49	45	24.96	16.16
KSBS2.5-3020R KSBS2.5-2030L	1.5	m2.5	30	R	B4	15	45	75	77.09	50	33.86	26.56
			20	L	B3	12	40	50	54.43	55	30.88	18.98
KSBS3-3020R KSBS3-2030L	1.5	m3	30	R	B4	16	50	90	92.21	55	35.34	26.66
			20	L	B3	16	45	60	65.58	70	40.17	26.86
KSBS4-3020R KSBS4-2030L	1.5	m4	30	R	B4	20	70	120	122.85	75	47.49	37.14
			20	L	B3	20	60	80	87.34	90	48.17	32.45
KSBS5-3020R KSBS5-2030L	1.5	m5	30	R	B4	25	90	150	153.67	90	58.08	42.75
			20	L	B3	22	80	100	109.2	110	61.62	38.07
KSBS1-4020R KSBS1-2040L	2	m1	40	R	B4	8	25	40	40.52	22	15.02	12.52
			20	L	B3	6	16	20	22.08	28	13.73	8.52
KSBS1.5-4020R KSBS1.5-2040L	2	m1.5	40	R	B4	10	38	60	60.75	35	24.93	20.75
			20	L	B3	8	25	30	33.08	46	25.45	16.77
KSBS2-4020R KSBS2-2040L	2	m2	40	R	B4	12	40	80	81	45	32.27	26
			20	L	B3	12	32	40	44.1	60	34.04	21.02
KSBS2.5-4020R KSBS2.5-2040L	2	m2.5	40	R	B4	15	50	100	101.27	55	39.65	31.27
			20	L	B3	12	40	50	55.2	75	43.61	26.30
KSBS3-4020R KSBS3-2040L	2	m3	40	R	B4	20	60	120	121.48	65	45.76	36.47
			20	L	B3	16	50	60	66.07	90	50.63	31.52
KSBS4-4020R KSBS4-2040L	2	m4	40	R	B4	20	70	160	162.07	80	53.69	42.07
			20	L	B3	20	60	80	88.50	120	66.24	42.12
KSBS5-4020R KSBS5-2040L	2	m5	40	R	B5	25	100	200	202.54	90	55.02	42.54
			20	L	B3	22	80	100	110.45	140	68.48	42.61
KSBS2.5-3618R KSBS2.5-1836L	2	m2.5	36	R	B4	15	55	90	91.29	43	28.38	21.79
			18	L	B3	12	38	45	50.30	64	34.06	20.32
KSBS3-3618R KSBS3-1836L	2	m3	36	R	B4	20	60	108	109.53	52	34.82	26.53
			18	L	B3	16	46	54	60.28	75	39.78	22.57
KSBS4-3618R KSBS4-1836L	2	m4	36	R	B4	20	70	144	145.99	72	48.84	37.99
			18	L	B3	20	60	72	80.19	100	52.51	30.05
KSBS2-4518R KSBS2-1845L	2.5	m2	45	R	B4	12	48	90	90.79	40	27.67	22.98
			18	L	B3	10	32	36	40.42	60	28.54	15.88
KSBS2.5-4518R KSBS2.5-1845L	2.5	m2.5	45	R	B4	15	55	112.5	113.49	50	34.94	28.74
			18	L	B3	12	40	45	50.35	72	33.19	16.82
KSBS3-4518R KSBS3-1845L	2.5	m3	45	R	B4	20	65	135	136.24	60	41.65	34.55
			18	L	B3	16	48	54	60.69	85	37.82	18.84
KSBS4-4518R KSBS4-1845L	2.5	m4	45	R	B4	25	80	180	181.57	75	50.98	40.96
			18	L	B3	20	62	72	80.86	110	48.03	21.77
KSBS5-4518R KSBS5-1845L	2.5	m5	45	R	B4	30	100	225	225.81	90	57.9	46.01
			18	L	B3	22	80	90	103.87	135	56.02	25.27

Hub width	Length of bore	Face width	Holding surface dia.	Allowable torque (N·m)		Allowable torque (kgf·m)		Backlash (mm)	Weight (kg)	Catalog No.
				Bending strength	Surface durability	Bending strength	Surface durability			
H	I	J	K							
15 11.67	23 22	11	37.56 21.34	15.4 10.5	11.3 7.52	1.57 1.07	1.15 0.77	0.06~0.16	0.26 0.13	KSBS2-3020R KSBS2-2030L
18 14.17	30 28	15	45.61 27.42	31.7 21.6	23.6 15.7	3.23 2.20	2.40 1.60	0.07~0.17	0.55 0.28	KSBS2.5-3020R KSBS2.5-2030L
17 20	31 37	17	57.14 34.71	52.9 36.1	39.7 26.5	5.39 3.68	4.05 2.70	0.08~0.18	0.82 0.49	KSBS3-3020R KSBS3-2030L
25 23.33	40 43	20	78.59 46.89	115 78.7	88.1 58.8	11.8 8.03	8.99 5.99	0.12~0.27	1.90 1.05	KSBS4-3020R KSBS4-2030L
24 28.33	50 56	30	91.22 54.83	253 173	195 130	25.8 17.6	19.9 13.3	0.14~0.34	4.11 2.29	KSBS5-3020R KSBS5-2030L
8 7	12 12	6	26.58 9.17	3.01 1.51	2.22 1.11	0.31 0.15	0.23 0.11	0.03~0.13	0.068 0.019	KSBS1-4020R KSBS1-2040L
15 14.75	22 24	10	39.64 17.28	10.9 5.46	8.22 4.11	1.11 0.56	0.84 0.42	0.05~0.15	0.27 0.088	KSBS1.5-4020R KSBS1.5-2040L
18 18	27 32	15	48.46 20.92	27.8 13.9	21.3 10.7	2.83 1.42	2.17 1.09	0.06~0.16	0.51 0.19	KSBS2-4020R KSBS2-2040L
20 22.5	34 40	20	59.28 20.56	56.4 28.2	43.7 21.9	5.75 2.88	4.46 2.23	0.07~0.17	1.06 0.40	KSBS2.5-4020R KSBS2.5-2040L
24 27.5	38 47	22	73.81 29.61	92.5 46.4	72.6 36.3					