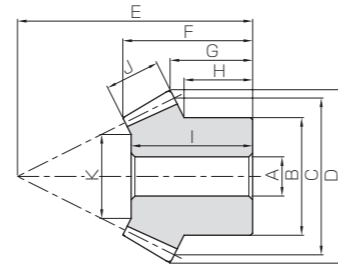
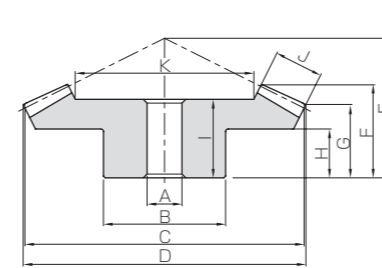




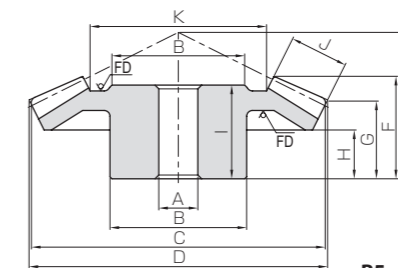
Specifications	
Precision grade	JIS B 1704: 1978 grade 3
Gear teeth	Gleason
Pressure angle	20°
Material	S45C
Heat treatment	—
Tooth hardness	(less than 194HB)
Surface treatment	Black oxide coating



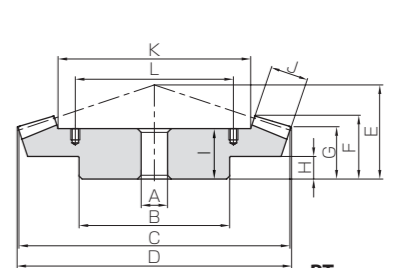
B3



B4



B5



BT

* FD has die-forged finish.

Catalog No.	Gear ratio	Module	No. of teeth	Shape	Bore		Pitch dia.	Outside dia.	Mounting distance	Total length	Crown to back length		Hub width
					A _{H7}	B					C	D	
KSB1-4518 KSB1-1845	2.5	m1	45	B4	8	30	45	45.46	23	16.95	14.57	10	
18			B3	6	15	18	20.57	32	16.34	10.02	8.9		
KSB1.25-4518 KSB1.25-1845		m1.25	45	B4	10	34	56.25	56.82	26	18.53	15.46	10	
18			B3	8	19	22.5	25.72	40	20.66	12.52	11.17		
KSB1.5-4518 KSB1.5-1845		m1.5	45	B4	10	36	67.5	68.18	30	21.1	17.35	10	
18			B3	8	23	27	30.86	45	21.97	12.02	10.45		
KSB2-4518 KSB2-1845		m2	45	B4	12	48	90	90.91	40	27.91	23.14	15	
18			B3	10	32	36	41.15	60	28.69	16.03	14.2		
KSB2.5-4518 KSB2.5-1845		m2.5	45	B4	15	55	112.5	113.64	50	35.06	28.92	18	
18			B3	12	40	45	51.44	72	33.31	17.04	14.75		
KSB3-4518 KSB3-1845		m3	45	B4	20	65	135	136.37	60	41.86	34.71	22	
18			B3	16	48	54	61.72	85	38.04	19.05	16.3		
KSB4-4518 KSB4-1845		m4	45	B4	20	80	180	181.82	75	51.16	41.28	24	
18			B3	20	62	72	82.3	110	48.28	22.06	18		
KSB5-4518 KSB5-1845		m5	45	B4	25	100	225	227.28	90	59.43	47.85	28	
18			B3	20	80	90	102.87	135	55.82	25.07	20.5		
KSB1-4515 KSB1-1545	3	m1	45	B4	8	30	45	45.37	17	11.77	10.06	5	
15			B3	6	12	15	17.67	29	12.51	6.95	6		
KSB1.25-4515 KSB1.25-1545		m1.25	45	B4	10	34	56.25	56.72	21	14.61	12.33	6	
15			B3	8	15	18.75	22.09	36	15.85	8.43	7.25		
KSB1.5-4515 KSB1.5-1545		m1.5	45	B4	10	36	67.5	68.06	28	20.44	17.59	11	
15			B3	8	18	22.5	26.54	47	23.19	13.92	12.5		
KSB2-4515 KSB2-1545		m2	45	B4	12	40	90	90.75	40	30.4	26.12	17	
15			B3	10	24	30	35.35	60	29.8	15.89	14		
KSB2.5-4515 KSB2.5-1545		m2.5	45	B4	15	50	112.5	113.43	50	38.35	32.65	22	
15			B3	12	30	37.5	44.18	75	38.41	19.86	17.5		
KSB3-4515 KSB3-1545		m3	45	B4	20	60	135	136.12	55	40.74	34.18	20	
15			B3	15	38	45	53.02	90	45.17	23.84	21.33		
KSB4-4515 KSB4-1545		m4	45	B5	20	80	180	181.5	70	50.79	42.24	24	
15			B3	16	50	60	70.69	115	54.6	26.78	23.33		
KSB5-4515 KSB5-1545		m5	45	B5	25	90	225	226.87	75	50.28	40.3	20	
15			B3	20	60	75	88.37	145	67.19	34.73	30		
KSB6-4515 KSB6-1545	m6	45	BT	30	160	270	272.24	100	72.62	58.36	30		
15		B3	25	70	90	106.03	175	89.04	42.67	36.67			
KSBY8-4515 KSBY8-1545	m8	45	BT	35	200	360	362.99	125	83.74	69.49	30		
15		B3	30	100	120	141.39	230	99.93	53.56	46.67			

- [Caution on Product Characteristics]
- The allowable torques shown in the table are the calculated values according to the assumed usage conditions. Please see page 303 for more details.
 - Dimensions of the outside diameter, the overall length and crown to back length are all theoretical values, and some differences will occur due to the corner chamfering of the gear tips.
 - For convenience in handling, BT Shaped Gears have tapped holes on their holding surface. To find the L dimensions and tap sizes, please refer to Page 304.

Length of bore	Face width	Holding surface dia.	Allowable torque (N·m)		Allowable torque (kgf·m)		Backlash (mm)	Weight (kg)	Catalog No.
			Bending strength	Surface durability	Bending strength	Surface durability			
15	7	30.73	3.35	0.35	0.34	0.04	0.03~0.13	0.11	KSB1-4518 KSB1-1845
15.5		10.31	1.33	0.14	0.01	0.019			
16	9	37.86	6.67	0.72	0.68	0.07	0.04~0.14	0.17	KSB1.25-4518 KSB1.25-1845
19.5		12.16	2.65	0.29	0.03	0.038			
18	11	45	11.7	1.29	1.19	0.13	0.05~0.15	0.28	KSB1.5-4518 KSB1.5-1845
21		16.51	4.64	0.51	0.05	0.063			
25	14	62.24	26.8	3.05	2.74	0.31	0.06~0.16	0.65	KSB2-4518 KSB2-1845
27.5		23.11	10.7	1.22	1.09	0.12			
31	18	76.53	53.4	6.20	5.44	0.63	0.07~0.17	1.23	KSB2.5-4518 KSB2.5-1845
31.5		26.82	21.2	2.48	2.16	0.25			
37	21	92.96	90.5	10.7	9.23	1.09	0.08~0.18	2.05	KSB3-4518 KSB3-1845
36		33.41	36.0	4.29	3.67	0.44			
45	29	122.33	220	26.8	22.4	2.73	0.12~0.27	4.69	KSB4-4518 KSB4-1845
46		45.83	87.3	10.7	8.91	1.09			
51	34	156.56	411	51.8	41.9	5.28	0.14~0.34	8.31	KSB5-4518 KSB5-1845
52.5		56.9	164	20.7	16.7	2.11			
9	6	32.02	2.84	0.27	0.29	0.027	0.03~0.13	0.078	KSB1-4515 KSB1-1545
12		10.05	0.98	0.09	0.10	0.0091			
12	8	39.63	5.80	0.56	0.59	0.057	0.04~0.14	0.15	KSB1.25-4515 KSB1.25-1545
15		10.9	2.00	0.19	0.20	0.019			
17	10	46.58	10.3	1.02	1.05	0.10	0.05~0.15	0.25	KSB1.5-4515 KSB1.5-1545
22.5		14.75	3.56	0.34	0.36	0.035			
26	15	59.04	26.4	2.68	2.69	0.27	0.06~0.16	0.60	KSB2-4515 KSB2-1545
29		19.13	9.10	0.89	0.93	0.091			
35	20	72.84	53.6	5.55	5.46	0.57	0.07~0.17	1.22	KSB2.5-4515 KSB2.5-1545
37		20.51	18.5	1.85	1.89	0.19			
35	23	88.18	90.2	9.53	9.20	0.97	0.08~0.18	1.99	KSB3-4515 KSB3-1545
43		22.53	31.2	3.18	3.18	0.32			
45	30	118.09	211	23.0	21.5	2.35	0.12~0.27	3.89	KSB4-4515 KSB4-1545
52		32.26	72.8	7.67	7.43	0.78			
44	35	152.88	394	44.3	40.2	4.52	0.14~0.34	6.10	KSB5-4515 KSB5-1545
65		48.64	136	14.8	13.9	1.51			
62	50	169.26	751	87.0	76.6	8.87	0.16~0.36	18.0	KSB6-4515 KSB6-1545
86		49.77	259	39.9	26.4	4.06			
67	50	255.92	1470	179	150	18.3	0.20~0.45	36.4	KSBY8-4515 KSBY8-1545
93		61.77	506	59.7	51.6	6.09			

- [Caution on Secondary Operations]
- Please read "Caution on Performing Secondary Operations" (Page 304) when performing modifications and/or secondary operations for safety concerns.