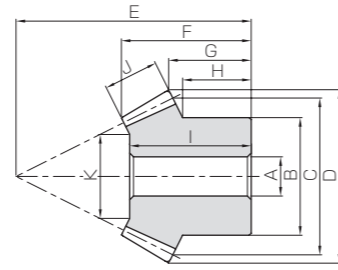
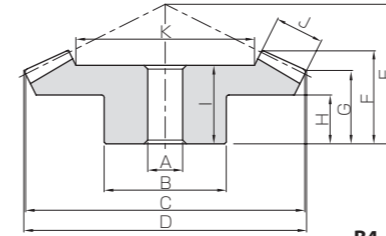




Specifications	
Precision grade	JIS B 1704: 1978 grade 3
Gear teeth	Gleason
Pressure angle	20°
Material	SUS303
Heat treatment	—
Tooth hardness	(less than 187HB)



B3



B4

Catalog No.	Gear ratio	Module	No. of teeth	Shape	Bore		Pitch dia.	Outside dia.	Mounting distance	Total length	Crown to back length		Hub width
					A _{H7}	B					C	D	
KSUB1.5-3020	1.5	m1.5	30	B4	10	30	45	46.24	28	18.53	13.93	8	
KSUB1.5-2030			20	B3	8	25	30	33.13	33	18.63	11.54	8.83	
KSUB2-3020		m2	30	B4	10	35	60	61.65	40	26.87	21.24	15	
KSUB2-2030			20	B3	10	35	40	44.18	45	25.06	16.39	13.33	
KSUB2.5-3020		m2.5	30	B4	15	45	75	77.07	50	34.22	26.55	18	
KSUB2.5-2030			20	B3	12	40	50	55.22	55	31.06	19.24	14.16	
KSUB3-3020	m3	30	B4	15	60	90	92.48	55	35.56	26.86	17		
KSUB3-2030		20	B3	15	50	60	66.27	70	40.48	27.09	21.66		
KSUB1.5-4020	2	m1.5	40	B4	10	38	60	60.88	35	25.01	20.88	15	
KSUB1.5-2040			20	B3	8	25	30	33.61	46	25.54	16.9	14.75	
KSUB2-4020		m2	40	B4	12	50	80	81.17	45	32.37	26.17	18	
KSUB2-2040			20	B3	12	32	40	44.81	60	34.16	21.2	18	
KSUB2.5-4020		m2.5	40	B4	15	60	100	101.46	55	39.73	31.46	20	
KSUB2.5-2040			20	B3	12	40	50	56.01	75	43.78	26.5	22.5	
KSUB3-4020	m3	40	B4	20	70	120	121.76	65	45.85	36.76	24		
KSUB3-2040		20	B3	16	50	60	67.22	90	50.81	31.8	27.5		
KSUB1.5-4515	3	m1.5	45	B4	10	36	67.5	68.06	28	20.44	17.59	11	
KSUB1.5-1545			15	B3	8	18	22.5	26.54	47	23.19	13.92	12.5	
KSUB2-4515		m2	45	B4	12	60	90	90.75	40	30.4	26.12	17	
KSUB2-1545			15	B3	10	24	30	35.35	60	29.8	15.89	14	
KSUB2.5-4515		m2.5	45	B4	15	60	112.5	113.43	50	38.35	32.65	22	
KSUB2.5-1545			15	B3	12	30	37.5	44.18	75	38.41	19.86	17.5	
KSUB3-4515	m3	45	B4	20	80	135	136.12	55	40.74	34.18	20		
KSUB3-1545		15	B3	15	38	45	53.02	90	45.17	23.84	21.33		

- [Caution on Product Characteristics]
- ① The allowable torques shown in the table are the calculated values according to the assumed usage conditions. Please see page 303 for more details.
 - ② Dimensions of the outside diameter, the overall length and crown to back length are all theoretical values, and some differences will occur due to the corner chamfering of the gear tips.

Length of bore	Face width	Holding surface dia.	Allowable torque (N·m)		Allowable torque (kgf·m)		Backlash (mm)	Weight (kg)	Catalog No.
			Bending strength	Surface durability	Bending strength	Surface durability			
16	9	27.37	3.22	0.46	0.33	0.047	0.05~0.15	0.12	KSUB1.5-3020
17		17.05	2.23	0.31	0.23	0.032			
23	11	37.56	7.22	1.08	0.74	0.11	0.06~0.16	0.26	KSUB2-3020
22		21.34	5.01	0.72	0.51	0.074			
30	15	45.61	14.9	2.28	1.52	0.23	0.07~0.17	0.54	KSUB2.5-3020
28		27.42	10.3	1.52	1.05	0.15			
31	17	57.14	24.8	3.87	2.53	0.39	0.08~0.18	0.94	KSUB3-3020
37		34.71	17.2	2.58	1.76	0.26			
22	10	39.64	5.23	0.79	0.53	0.081	0.05~0.15	0.27	KSUB1.5-4020
24		17.28	2.64	0.40	0.27	0.040			
27	15	48.46	13.4	2.07	1.36	0.21	0.06~0.16	0.61	KSUB2-4020
32		20.92	6.72	1.04	0.69	0.11			
35	20	60.28	27.1	4.29	2.76	0.44	0.07~0.17	1.21	KSUB2.5-4020
41		24.56	13.6	2.15	1.39	0.22			
38	22	73.81	44.4	7.19	4.53	0.73	0.08~0.18	1.86	KSUB3-4020
47		29.61	22.4	3.60	2.28	0.37			
17	10	46.58	5.70	0.72	0.58	0.074	0.05~0.15	0.25	KSUB1.5-4515
22.5		14.75	1.97	0.24	0.20	0.025			
26	15	59.04	14.6	1.90	1.49	0.19	0.06~0.16	0.80	KSUB2-4515
29		19.13	5.03	0.63	0.51	0.065			
35	20	72.84	29.6	3.94	3.02	0.40	0.07~0.17	1.36	KSUB2.5-4515
37		20.51	10.2	1.31	1.04	0.13			
35	23	88.18	49.9	6.77	5.09	0.69	0.08~0.18	2.32	KSUB3-4515
43		22.53	17.2	2.26	1.76	0.23			

- [Caution on Secondary Operations]
- ① Please read "Caution on Performing Secondary Operations" (Page 304) when performing modifications and/or secondary operations for safety concerns.