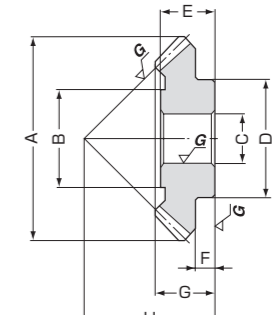
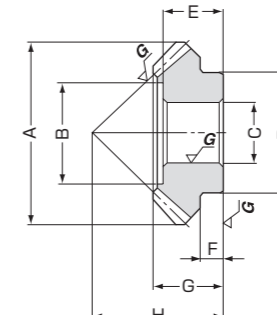
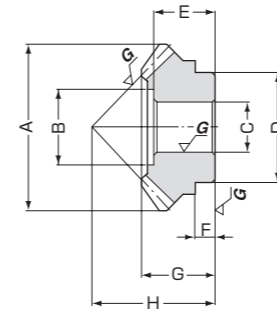
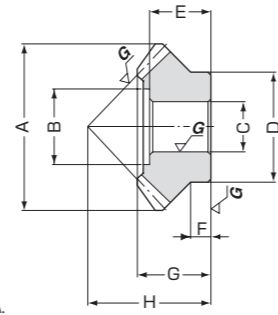




Specifications	
Precision grade	JIS B 1704 : 1978 grade 0
Gear teeth	Gleason
Pressure angle	20°
Helix angle	35°
Material	SCM415 *
Heat treatment	Carburizing (bore & hubs are masked)
Tooth hardness	60 ~ 63HRC * *

\* Module 3.5 and larger are made of SCM420.  
 \*\* Tooth Hardness for module 1.5 and 2 is between 80 to 83 HRA.



Catalog No.	Gear ratio	Module	No. of teeth	Direction of spiral	Pitch dia.	Face width	Shape	Outside dia.	Holding surface dia.	Bore	Hub dia.	Length of bore	
								A	B	CH7	D	E	
KKSP031001GUL KKSP031001GUR	1	m1.5	20	L R	30	7	A	30.5	16.5	10	22	13	
KKSP040001GUL KKSP040001GUR		m2	20	L R	40	9	B	40	22.5	12	31	14	
KKSP053001GUL KKSP053001GUR		m2.5	21	L R	52.5	12	B	53	31	14	38	20	
KKSP066001GUL KKSP066001GUR		m3	21	L R	63	15	B	65	33.5	16	47	25	
KKSP078001GUL KKSP078001GUR		m3.5	22	L R	77	18	B	78	43	20	54	27	
KKSP092001GUL KKSP092001GUR		m4	22	L R	88	21	B	91	49	22	63	32	
KKSP105001GUL KKSP105001GUR		m4.5	23	L R	103.5	25	C	105	50	26	70	35	
KKSP132001GUL KKSP132001GUR		m5	26	L R	130	29	C	132	64	30	82	41	
KKSP157001GUL KKSP157001GUR		m5.5	28	L R	154	34	C	157	76	32	92	47	
KKSP184001GUL KKSP184001GUR		m6	30	L R	180	38	C	184	84	40	101	51	
KKSP0481.5GUP KKSP0481.5GUG		1.5	m2	16 24	L R	32 48	9	A' B	34 48	17.5 30	10 12	24 30	13 17
KKSP0611.5GUP KKSP0611.5GUG			m2.25	18 27	L R	40.5 60.75	12	A' B	42 61	22 36	12 14	30 40	17 20
KKSP0741.5GUP KKSP0741.5GUG	m2.75		18 27	L R	49.5 74.25	15	A' B	52 74	27 44.5	14 20	40 50	20 25	
KKSP0901.5GUP KKSP0901.5GUG	m3		20 30	L R	60 90	18	B B	63 90	34 54.5	16 20	44 56	24 29	
KKSP1051.5GUP KKSP1051.5GUG	m3.5		20 30	L R	70 105	21	B C	74 105	38 53	20 22	50 63	25 32	
KKSP1241.5GUP KKSP1241.5GUG	m3.75		22 33	L R	82.5 123.75	24	B C	87 124	46.5 64	20 26	56 69	29 35	
KKSP1411.5GUP KKSP1411.5GUG	m4.25		22 33	L R	93.5 140.25	28	B C	99 141	53 68	22 30	63 73	32 41	
KKSP1631.5GUP KKSP1631.5GUG	m4.5		24 36	L R	108 162	32	B C	113 163	64.5 76	26 32	69 82	35 47	
KKSP1811.5GUP KKSP1811.5GUG	m5		24 36	L R	120 180	35	B C	126 181	71.5 86	30 38	73 90	41 48	
KKSP039002GUP KKSP039002GUG	2		m1.5	13 26	L R	19.5 39	7	A B	21 38.5	10.2 24	8 10	16 24	14 13
KKSP056002GUP KKSP056002GUG			m2	14 28	L R	28 56	10	B B	30 56	15.3 35.5	8 12	20 30	12 18
KKSP075002GUP KKSP075002GUG			m2.5	15 30	L R	37.5 75	14	A' C	40 75	20 36	12 16	30 44	17 24
KKSP096002GUP KKSP096002GUG		m3	16 32	L R	48 96	18	B C	53 96	23.5 46	12 20	36 56	19 29	
KKSP119002GUP KKSP119002GUG		m3.5	17 34	L R	59.5 119	22	A C	65 119	34 54	16 26	44 63	25 34	
KKSP145002GUP KKSP145002GUG		m4	18 36	L R	72 144	27	A C	78 145	38 60	20 30	54 73	28 39	
KKSP172002GUP KKSP172002GUG		m4.5	19 38	L R	85.5 171	32	A C	93 172	48 70	26 36	69 79	34 46	

Hub width	Total length	Mounting distance	Keyway	Allowable torque (kgf-m)	Backlash (mm)	Weight (kg)	Catalog No.
F	G	H					
6	15	25	12	0.61	0 ~0.05	0.04	KKSP031001GUL KKSP031001GUR
7	16.5	30	16	1.59	0 ~0.05	0.09	KKSP040001GUL KKSP040001GUR
8	22.8	40	22	3.63	0.05~0.10	0.21	KKSP053001GUL KKSP053001GUR
13	29.5	50	25	6.26	0.05~0.10	0.39	KKSP066001GUL KKSP066001GUR
12	32	57	32	9.74	0.05~0.10	0.59	KKSP078001GUL KKSP078001GUR
14	38	66	38	15.1	0.05~0.10	0.96	KKSP092001GUL KKSP092001GUR
14	39	72	40	23.9	0.05~0.10	1.33	KKSP105001GUL KKSP105001GUR
14	45	88	48	38.4	0.05~0.10	2.49	KKSP132001GUL KKSP132001GUR
20	53.5	105	55	60.1	0.05~0.10	3.90	KKSP157001GUL KKSP157001GUR
17	56.5	118	62	85.8	0.05~0.10	5.79	KKSP184001GUL KKSP184001GUR
4.5 7	14.5 19	31 30	— 20	2.02	0 ~0.05	0.05 0.14	KKSP0481.5GUP KKSP0481.5GUG
5.5 10	19 23.5	39 37	16 27	4.12	0.05~0.10	0.10 0.28	KKSP0611.5GUP KKSP0611.5GUG
6 12	22 29	46 45	20 35	7.15	0.05~0.10	0.20 0.49	KKSP0741.5GUP KKSP0741.5GUG
8 13	26.5 33	56 53	25 42	11.9	0.05~0.10	0.34 0.84	KKSP0901.5GUP KKSP0901.5GUG
7 13	28.5 34	63 57	28 42	17.8	0.05~0.10	0.47 1.18	KKSP1051.5GUP KKSP1051.5GUG
7 14	33 36.5	74 64	36 48	26.0	0.05~0.10	0.80 1.71	KKSP1241.5GUP KKSP1241.5GUG
7 17	36 43.5	82 74	42 50	39.2	0.05~0.10	1.15 2.46	KKSP1411.5GUP KKSP1411.5GUG
7 19	38.5 49.5	92 85	48 55	56.5	0.05~0.10	1.64 3.84	KKSP1631.5GUP KKSP1631.5GUG
10 19	45.5 50.5	105 90	55 60	72.4	0.05~0.10	2.21 4.85	KKSP1811.5GUP KKSP1811.5GUG
7.6 7	14.5 15	28 22	— 20	0.89	0 ~0.05	0.02 0.07	KKSP039002GUP KKSP039002GUG
2.5 8	13 20.5	32 30	10 20	2.65	0 ~0.05	0.04 0.19	KKSP056002GUP KKSP056002GUG
4.5 11	19.5 25.5	44 38	14 25	6.43	0.05~0.10	0.10 0.44	KKSP075002GUP KKSP075002GUG
2.5 12	21.5 31	53 47	19 32	12.5	0.05~0.10	0.20 0.91	KKSP096002GUP KKSP096002GUG
3.6 15	27.5 35.5	67 55	25 40	22.2	0.05~0.10	0.36 1.45	KKSP119002GUP KKSP119002GUG
3.5 16	33 40.5	80 64	30 42	36.3	0.05~0.10	0.65 2.44	KKSP145002GUP KKSP145002GUG
4.4 20	38 47	94 75	38 50	59.9	0.05~0.10	0.97 3.80	KKSP172002GUP KKSP172002GUG

[Caution on Product Characteristics] ① The allowable torque is calculated by converting the output torque (600 rpm) on Page 337 to kgf/m, according to assumed usage conditions.  
 ② These gears produce axial thrust forces. See Page 274 for more details.

[Caution on Secondary Operations] ① Please read "Caution on Performing Secondary Operations" (Page 304) when performing modifications and/or secondary operations for safety concerns.