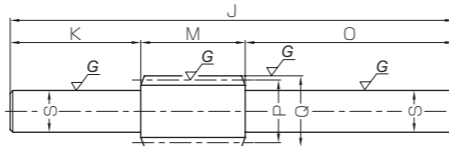




Specifications	
Precision grade	KHK W 001 grade 2
Reference section of gear	Axial
Gear teeth	Standard full depth
Normal pressure angle	20°
Material	SCM440
Heat treatment	Thermal refined, tooth surface induction hardened
Tooth hardness	50 ~ 60HRC



W5

Catalog No.	Axial module	Number of starts	Lead angle	Hand thread	Shape	Total length		Shaft length (L)		Neck length (R)		Pitch dia.
						J	K	L	M	N	O	
KKWG0.5-R1	m0.5	1	3°11'	R	W5	65	19	—	12	—	34	9
KKWG0.5-R2		2	6°20'	R	W5	65	19	—	12	—	34	9
KKWG0.8-R1	m0.8	1	3°49'	R	W5	85	25	—	20	—	40	12
KKWG0.8-R2		2	7°36'	R	W5	85	25	—	20	—	40	12

[Caution on Product Characteristics] ① These worms produce axial thrust forces. See Page 362 for more details.

Outside dia.	Neck dia.	Shaft dia.	Weight (kg)	Catalog No.
Q	R	Sh7		
10	—	6	0.018	KKWG0.5-R1
10	—	6	0.018	KKWG0.5-R2
13.6	—	8	0.043	KKWG0.8-R1
13.6	—	8	0.043	KKWG0.8-R2

[Caution on Secondary Operations] ① Please read "Caution on Performing Secondary Operations" (Page 362) when performing modifications and/or secondary operations for safety concerns.

② Due to the gear teeth being induction hardened, no secondary operations can be performed on tooth areas including the bottom land (approx. 2 to 3 mm). Use carbide tools for the modification of the shaft area near the bottom land.

**KAG**  
**Worm Wheels**

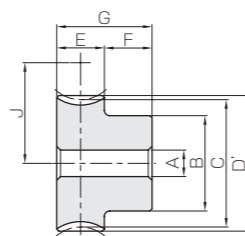
Module 0.5, 0.8

KAG

Worm Wheels



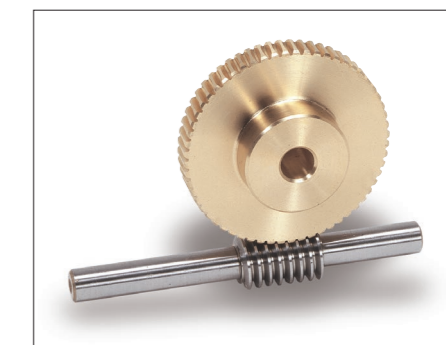
Specifications	
Precision grade	KHK W 002 grade 2
Reference section of gear	Rotating plane
Gear teeth	Standard full depth
Normal pressure angle	20°
Material	CAC702 (formerly JIS A & BC2)
Heat treatment	—
Tooth hardness	—



HA

Catalog No.	Reduction ratio	Transverse module	No. of teeth	Number of starts	Helix angle	Hand thread	Shape	Bore		Hub dia.		Pitch dia.	Throat dia.	Outside dia.	Face width
								A <sub>H7</sub>	B	C	D	D'	E		
KAG0.5-20R1	20	m0.5	20	1	3°11'	R	HA	4	9	10	—	11	5		
KAG0.5-20R2	10		20	2	6°20'	R	HA	4	9	10	—	11	5		
KAG0.5-30R1	30		30	1	3°11'	R	HA	4	12	15	—	16	5		
KAG0.5-30R2	15		30	2	6°20'	R	HA	4	12	15	—	16	5		
KAG0.5-40R1	40		40	1	3°11'	R	HA	5	15	20	—	21	5		
KAG0.5-50R1	50		50	1	3°11'	R	HA	5	20	25	—	26	5		
KAG0.5-60R1	60	60	1	3°11'	R	HA	5	25	30	—	31	5			
KAG0.8-20R1	20	m0.8	20	1	3°49'	R	HA	5	12	16	—	17.6	8		
KAG0.8-20R2	10		20	2	7°36'	R	HA	5	12	16	—	17.6	8		
KAG0.8-30R1	30		30	1	3°49'	R	HA	5	18	24	—	25.6	8		
KAG0.8-30R2	15		30	2	7°36'	R	HA	5	18	24	—	25.6	8		
KAG0.8-40R1	40		40	1	3°49'	R	HA	6	20	32	—	33.6	8		
KAG0.8-50R1	50		50	1	3°49'	R	HA	8	25	40	—	41.6	8		
KAG0.8-60R1	60	60	1	3°49'	R	HA	8	25	48	—	49.6	8			

[Caution on Product Characteristics] ① The allowable torques shown in the table are the calculated values according to the assumed usage conditions. Please see Page 358 for more details.



NOTE 1 : Allowable torque based on worm speed (rpm)

Hub width	Total length	Web thickness	Web O.D.	Mounting distance	Allowable torque (N·m) NOTE 1							Backlash (mm)	Weight (kg)	Catalog No.
					30 <sub>rpm</sub>	100 <sub>rpm</sub>	300 <sub>rpm</sub>	600 <sub>rpm</sub>	900 <sub>rpm</sub>	1200 <sub>rpm</sub>	1800 <sub>rpm</sub>			
7	12	—	—	9.5	0.52	0.44	0.36	0.30	0.26	0.24	0.21	0.02~0.14	0.0056	KAG0.5-20R1
7	12	—	—	9.5	0.51	0.42	0.33	0.27	0.24	0.22	0.19	0.02~0.14	0.0056	KAG0.5-20R2
7	12	—	—	12	1.09	0.94	0.77	0.65	0.58	0.53	0.48	0.02~0.14	0.012	KAG0.5-30R1
7	12	—	—	12	1.09	0.92	0.73	0.60	0.54	0.49	0.43	0.02~0.14	0.012	KAG0.5-30R2
7	12	—	—	14.5	1.86	1.60	1.34	1.15	1.02	0.94	0.84	0.02~0.14	0.020	KAG0.5-40R1
7	12	—	—	17	2.82	2.42	2.05	1.77	1.58	1.46	1.30	0.02~0.14	0.035	KAG0.5-50R1
7	12	—	—	19.5	3.94	3.41	2.89	2.50	2.26	2.08	1.87	0.02~0.14	0.053	KAG0.5-60R1
8	16	—	—	14	1.78	1.50	1.21	1.00	0.88	0.82	0.71	0.06~0.17	0.018	KAG0.8-20R1
8	16	—	—	14	1.76	1.44	1.11	0.91	0.80	0.74	0.63	0.06~0.17	0.018	KAG0.8-20R2
8	16	—	—	18	3.77	3.21	2.62	2.20	1.96	1.81	1.61	0.06~0.17	0.043	KAG0.8-30R1
8	16	—	—	18	3.75	3.14	2.46	2.02	1.80	1.65	1.45	0.06~0.17	0.043	KAG0.8-30R2
8	16	—	—	22	6.45	5.49	4.55	3.87	3.46	3.19	2.83	0.06~0.17	0.068	KAG0.8-40R1
8	16	—	—	26	9.75	8.31	6.94	5.94	5.34	4.96	4.38	0.06~0.17	0.10	KAG0.8-50R1
8	16	—	—	30	13.6	11.7	9.77	8.39	7.63	7.05	6.27	0.06~0.17	0.14	KAG0.8-60R1

[Caution on Secondary Operations] ① Please read "Caution on Performing Secondary Operations" (Page 362) when performing modifications and/or secondary operations for safety concerns.