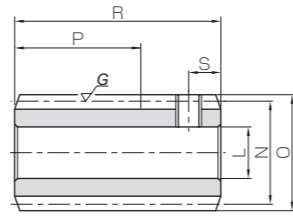


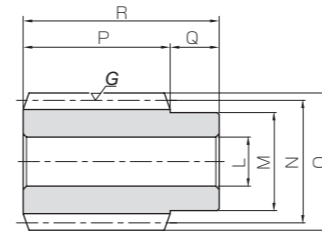


Specifications	
Precision grade	KHK W 001 grade 2 *
Reference section of gear	Axial
Gear teeth	Standard full depth
Normal pressure angle	20°
Material	S45C
Heat treatment	Teeth induction hardened
Tooth hardness	50 ~ 60HRC
Surface treatment	Black oxide coated except for ground part

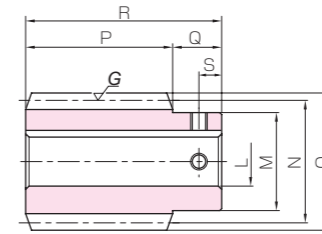
\* The precision grade of J Series products is equivalent to the value shown in the table.



W2



W1



W1K



Catalog No.	Axial module	Number of starts	Lead angle	Hand thread	Shape	Bore		Pitch dia.	Outside dia.	Face width	Hub width (R)	Hub width (L)
						L <sub>H7</sub>	M					
KSWG1-R1	m1	1	3°35'	R	W2	8	—	16	18	(20)	—	—
KSWG1-R2						8	—					
KSWG1.5-R1	m1.5	1	3°26'	R	W1	10	20	25	28	30	10	—
KSWG1.5-R1J10						10	—					
KSWG1.5-R2	m1.5	2	6°51'	R	W1	10	20	25	28	30	10	—
KSWG1.5-R2J10						10	—					

[Caution on Product Characteristics] ① For W2-shaped products, a set screw is included. When setting up the mating wheel, make sure no friction occurs within the set screw.  
② These worms produce axial thrust forces. See Page 362 for more details.

[Caution on Secondary Operations] ① Please read "Caution on Performing Secondary Operations" (Page 362) when performing modifications and/or secondary operations for safety concerns.  
② Due to the gear teeth being induction hardened, no secondary operations can be performed on tooth areas including the bottom land (approx. 2 to 3 mm).

Total length	Keyway	Set Screw		Weight (kg)	Catalog No.
		Width×Depth	Size		
32	—	M4	5	0.037	KSWG1-R1
32	—	M4	5	0.037	KSWG1-R2
40	—	—	—	0.12	KSWG1.5-R1
40	4 x 1.8	M4	5	0.11	KSWG1.5-R1J10
40	—	—	—	0.12	KSWG1.5-R2
40	4 x 1.8	M4	5	0.11	KSWG1.5-R2J10

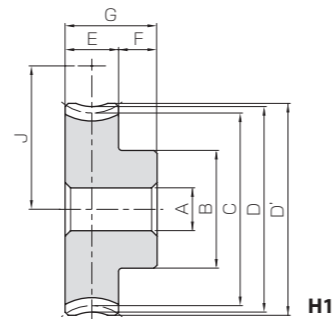
[Caution on J series] ① As available-on-request products, requires a lead-time for shipping within 2 working-days (excludes the day ordered), after placing an order. Please allow additional shipping time to get to your local distributor.  
② Number of products we can process for one order is 1 to 20 units. For quantities of 21 or more pieces, we need to quote price and lead time.  
③ Keyways are made according to JIS B1301 standards, Js9 tolerance.  
④ Areas of products which have been re-worked will not be black oxide coated.  
⑤ For products having a tapped hole, a set screw is included.



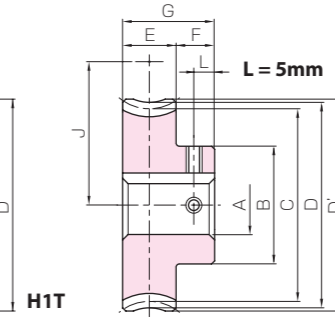
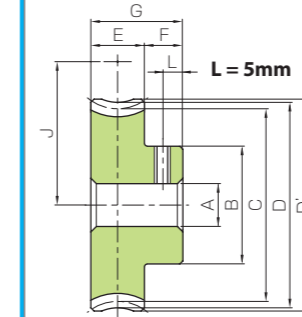
Specifications	
Precision grade	KHK W 002 grade 2 *
Reference section of gear	Rotating plane
Gear teeth	Standard full depth
Normal pressure angle	20°
Material	CAC702 (formerly JIS A & BC2)
Heat treatment	—
Tooth hardness	—

\* The precision grade of J Series products is equivalent to the value shown in the table.

A <sub>H7</sub>	Bore
B	Hub dia.
C	Pitch dia.
D	Throat dia.
D'	Outside dia.
E	Face width
F	Hub width
G	Length
(H)	Web thickness
(I)	Web O.D.
J	Mounting distance



H1



H1K



Catalog No.	Reduction ratio	No. of teeth	Number of starts	Helix angle	Hand thread	Shape	A <sub>H7</sub>	B	C	D	D'	E	F	G	J	Allowable torque (N·m) NOTE 1							Backlash (mm)	Weight (kg)
																30 rpm	100 rpm	300 rpm	600 rpm	900 rpm	1200 rpm	1800 rpm		
																NOTE 1 : Allowable torque based on worm speed (rpm)								
KAG1-20R1	20	20	1	3°35'	R	H1	6	16	20	22	23	—	—	—	18	3.35	2.79	2.23	1.83	1.63	1.50	1.30	0.08~0.19	0.038
KAG1-20R2	10	20	2	7°08'	R	H1	6	16	20	22	23	—	—	—	18	3.31	2.69	2.06	1.68	1.48	1.35	1.15	0.08~0.19	0.038
KAG1-30R1	30	30	1	3°35'	R	H1	6	20	30	32	33	—	—	—	23	7.08	5.98	4.84	4.05	3.63	3.31	2.92	0.08~0.19	0.078
KAG1-30R2	15	30	2	7°08'	R	H1	6	20	30	32	33	10	10	20	23	7.03	5.84	4.56	3.72	3.33	3.03	2.63	0.08~0.19	0.078
KAG1-40R1	40	40	1	3°35'	R	H1	8	26	40	42	43	—	—	—	28	12.1	10.2	8.43	7.12	6.38	5.86	5.13	0.08~0.19	0.13
KAG1-50R1	50	50	1	3°35'	R	H1	8	30	50	52	53	—	—	—	33	18.3	15.5	12.9	10.9	9.87	9.09	7.95	0.08~0.19	0.20
KAG1-60R1	60	60	1	3°35'	R	H1	10	35	60	62	63	—	—	—	38	25.6	21.8	18.1	15.4	14.1	12.9	11.4	0.08~0.19	0.29
KAG1.5-20R1	20	20	1	3°26'	R	H1	8	22	30	33	34.5	—	—	—	27.5	9.84	8.18	6.40	5.30	4.68	4.25	3.68	0.10~0.21	0.10
KAG1.5-20R2	10	20	2	6°51'	R	H1	8	22	30	33	34.5	—	—	—	27.5	9.72	7.87	5.92	4.87	4.25	3.83	3.27	0.10~0.21	0.10
KAG1.5-30R1	30	30	1	3°26'	R	H1	10	30	45	48	49.5	—	—	—	35	20.8	17.5	13.9	11.7	10.4	9.40	8.28	0.10~0.21	0.22
KAG1.5-30R2	15	30	2	6°51'	R	H1	10	30	45	48	49.5	14	10	24	35	20.7	17.1	13.1	10.8	9.56	8.58	7.46	0.10~0.21	0.22
KAG1.5-40R1	40	40	1	3°26'	R	H1	12	35	60	63	64.5	—	—	—	42.5	35.6	30.0	24.2	20.6	18.3	16.6	14.6	0.10~0.21	0.37
KAG1.5-50R1	50	50	1	3°26'	R	H1	12	45	75	78	79.5	—	—	—	50	53.8	45.4	36.9	31.6	28.3	25.8	22.6	0.10~0.21	0.59
KAG1.5-60R1	60	60	1	3°26'	R	H1	12	50	90	93	94.5	—	—	—	57.5	75.3	63.8	51.9	44.7	40.4	36.7	32.4	0.10~0.21	0.83

[Caution on Product Characteristics] ① The allowable torques shown in the table are the calculated values according to the assumed usage conditions. Please see Page 358 for more details.

[Caution on Secondary Operations] ① Please read "Caution on Performing Secondary Operations" (Page 362) when performing modifications and/or secondary operations for safety concerns.

**To order J Series products, please specify; Catalog No. + J + BORE**

Bore H7	* The product shapes of J Series items are identified by background color.														
	6	8	10	12	14	15	16	17	18	19	20	22	25	28	30
Keyway Js9	—			4 x 1.8			5 x 2.3			6 x 2.8			8 x 3.3		
Screw size	—			4 x 1.8			5 x 2.3			6 x 2.8			8 x 3.3		
Catalog No.	M4	M5	M4			M5			M6						
KAG1-20R1 J BORE	H1T														
KAG1-20R2 J BORE	H1T														
KAG1-30R1 J BORE	H1T	H1T													
KAG1-30R2 J BORE	H1T	H1T													
KAG1-40R1 J BORE		H1T	H1K	H1K											
KAG1-50R1 J BORE		H1T	H1K	H1K	H1K	H1K	H1K	H1K							
KAG1-60R1 J BORE			H1K	H1K	H1K	H1K	H1K	H1K	H1K	H1K					
KAG1.5-20R1 J BORE		H1T	H1K												
KAG1.5-20R2 J BORE		H1T	H1K												
KAG1.5-30R1 J BORE			H1K	H1K	H1K	H1K	H1K	H1K							
KAG1.5-30R2 J BORE			H1K	H1K	H1K	H1K	H1K	H1K							
KAG1.5-40R1 J BORE				H1K	H1K	H1K	H1K	H1K	H1K	H1K					
KAG1.5-50R1 J BORE					H1K	H1K	H1K	H1K	H1K	H1K	H1K	H1K	H1K		
KAG1.5-60R1 J BORE						H1K	H1K	H1K	H1K	H1K	H1K	H1K	H1K	H1K	H1K

[Caution on J series] ① As available-on-request products, requires a lead-time for shipping within 2 working-days (excludes the day ordered), after placing an order. Please allow additional shipping time to get to your local distributor.  
② Number of products we can process for one order is 1 to 20 units. For quantities of 21 or more pieces, we need to quote price and lead time.  
③ Keyways are made according to JIS B1301 standards, Js9 tolerance.  
④ Certain products which would otherwise have a very long tapped hole are counterbored to reduce the length of the tap.  
⑤ For products having a tapped hole, a set screw is included.  
⑥ The use of H1T shaped Set Screws for fastening gears to a shaft is a method only applicable to the usage for light loads. For secure fastening, please use dowel pins in combination.