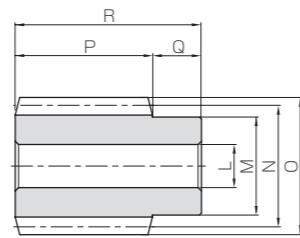




Specifications	
Precision grade	KHK W 001 grade 4 *
Reference section of gear	Normal plane
Gear teeth	Standard full depth
Normal pressure angle	20°
Material	S45C
Heat treatment	—
Tooth hardness	(less than 194HB)
Surface treatment	Black oxide coating

* The precision grade of J Series products is equivalent to the value shown in the table.



W1

Catalog No.	Normal module	Number of starts	Lead angle	Hand thread	Shape	Bore		Pitch dia.	Outside dia.	Face width	Hub width (R)		Hub width (L)
						L _{H7}	M				N	O	
<ul style="list-style-type: none"> • J Series (Available-on-request) • KSW1.5-R1 • KSW1.5-R1J8 • KSW1.5-R1J10 	m1.5	1	3°26'	R	W1 W1T W1K	8	20	25	28	30	10	—	
<ul style="list-style-type: none"> • KSW1.5-R2 • KSW1.5-R2J8 • KSW1.5-R2J10 						8	20	25	28	30	10	—	

[Caution on Product Characteristics] ① These worms produce axial thrust forces. See Page 362 for more details.

[Caution on Secondary Operations] ① Please read "Caution on Performing Secondary Operations" (Page 362) when performing modifications and/or secondary operations for safety concerns.

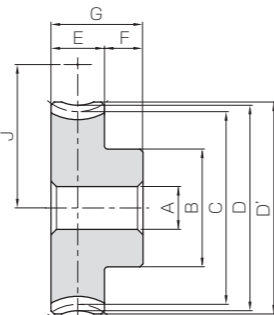
② Gear tooth hardening of the worm reduces the precision (introduces errors in the lead and pressure angles). Avoid heat treating as it will create bad tooth contact causing abrasion of the wheel.



Specifications	
Catalog No.	BG CG
Precision grade	KHK W 002 grade 4 *
Reference section of gear	Normal plane
Gear teeth	Standard full depth
Normal pressure angle	20°
Material	CAC502 (formerly JIS PBC2) FC200 * *
Heat treatment	—
Tooth hardness	—

* The precision grade of J Series products is equivalent to the value shown in the table.
 * * FC200's tensile strength (200N/mm²) is derived from test specimens and differs according to the product shape.

A _{H7}	Bore
B	Hub dia.
C	Pitch dia.
D	Throat dia.
D'	Outside dia.
E	Face width
F	Hub width
G	Total length
(H)	Web thickness
(I)	Web O.D.
J	Mounting distance



H1

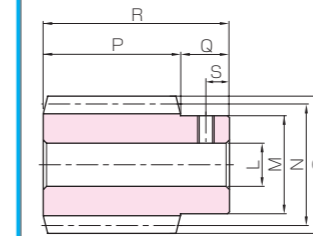
NOTE 1 : Allowable torque based on worm speed (rpm)

Catalog No.	Reduction ratio	No. of teeth	Number of starts	Helix angle Hand thread	Shape	A _{H7}	B	C	D	D'	E	F	G	J	Allowable torque (N·m) NOTE 1						Backlash (mm)	Weight (kg)
															30 rpm	100 rpm	300 rpm	600 rpm	900 rpm	1200 rpm		
KBG1.5-20R	20	20	1	3°26'	R	H1	8	22	30.05	33	34.5	12	22	27.5	4.76	3.96	3.10	2.56	2.27	2.06	0.08~0.26	0.10
KBG1.5-20R2	10	20	2	6°54'			8	22	30.22	33	34.5	12	22	27.5	4.75	3.85	2.89	2.38	2.08	1.87		
KBG1.5-30R1	30	30	1	3°26'			10	30	45.08	48	49.5	12	22	35	10.1	8.47	6.72	5.67	5.03	4.55		
KBG1.5-30R2	15	30	2	6°54'			10	30	45.33	48	49.5	12	22	35	10.1	8.37	6.40	5.26	4.67	4.20		
KBG1.5-40R1	40	40	1	3°26'			12	30	60.11	63	64.5	12	22	42.5	17.2	14.5	11.7	9.96	8.86	8.04		
KBG1.5-50R1	50	50	1	3°26'			12	40	75.13	78	79.5	14	24	50	30.4	25.6	20.8	17.8	16.0	14.6		
KCG1.5-30R1	30	30	1	3°26'			10	30	45.08	48	49.5	12	22	35	6.04	5.08	4.03	3.40	3.02	2.73		
KCG1.5-40R1	40	40	1	3°26'			12	30	60.11	63	64.5	12	22	42.5	10.3	8.71	7.01	5.98	5.31	4.83		
KCG1.5-50R1	50	50	1	3°26'			12	40	75.13	78	79.5	14	24	50	18.2	15.4	12.5	10.7	9.59	8.74		
KCG1.5-60R1	60	60	1	3°26'			12	40	90.16	93	94.5	14	24	57.5	25.5	21.6	17.6	15.1	13.7	12.4		
KCG1.5-80R1	80	80	1	3°26'	15	50	120.22	123	124.5	14	24	72.5	43.1	36.8	30.1	26.3	23.8	21.9				
KCG1.5-100R1	100	100	1	3°26'	15	50	150.27	153	154.5	14	24	87.5	64.4	55.6	45.8	40.1	36.4	33.6				

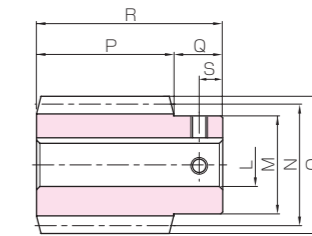
[Caution on Product Characteristics] ① Worm Wheels are profile shifted to create the proper center distance.

② The allowable torques shown in the table are the calculated values according to the assumed usage conditions. Please see Page 358 for more details.

[Caution on Secondary Operations] ① Please read "Caution on Performing Secondary Operations" (Page 362) when performing modifications and/or secondary operations for safety concerns.



W1T



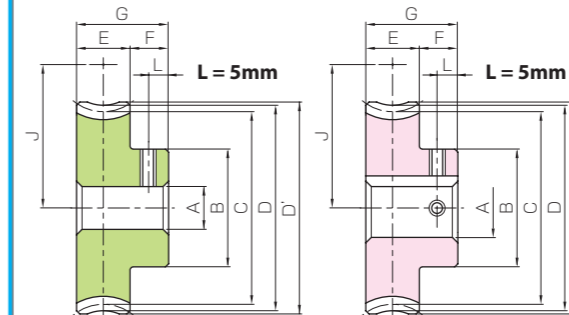
W1K



Total length	Keyway	Set Screw		Weight (kg)	Catalog No.
		Size	S		
40	—	—	—	0.12	<ul style="list-style-type: none"> • J Series (Available-on-request) • KSW1.5-R1 • KSW1.5-R1J8 • KSW1.5-R1J10
		4 x 1.8	M5 M4	5 5	
40	—	—	—	0.12	<ul style="list-style-type: none"> • J Series (Available-on-request) • KSW1.5-R2 • KSW1.5-R2J8 • KSW1.5-R2J10
		4 x 1.8	M5 M4	5 5	

[Caution on J series]

- ① As available-on-request products, requires a lead-time for shipping within 2 working-days (excludes the day ordered), after placing an order. Please allow additional shipping time to get to your local distributor.
- ② Number of products we can process for one order is 1 to 20 units. For quantities of 21 or more pieces, we need to quote price and lead time.
- ③ Keyways are made according to JIS B1301 standards, Js9 tolerance.
- ④ Areas of products which have been re-worked will not be black oxide coated.
- ⑤ For products having a tapped hole, a set screw is included.



H1T

H1K



To order J Series products, please specify; Catalog No. + J + BORE

Bore H7	* The product shapes of J Series items are identified by background color.																												
	8	10	12	14	15	16	17	18	19	20	22	25	28	30															
Keyway Js9	8		10		12		14		15		16		17		18		19		20		22		25		28		30		
Screw size	—				4 x 1.8				5 x 2.3				6 x 2.8				8 x 3.3												
Catalog No.	M5		M4				M5				M6																		
KBG1.5-20R1 J BORE	H1T	H1K																											
KBG1.5-20R2 J BORE	H1T	H1K																											
KBG1.5-30R1 J BORE		H1K	H1K	H1K	H1K	H1K	H1K																						
KBG1.5-30R2 J BORE		H1K	H1K	H1K	H1K	H1K	H1K																						
KBG1.5-40R1 J BORE			H1K	H1K	H1K	H1K	H1K																						
KBG1.5-50R1 J BORE				H1K	H1K	H1K	H1K	H1K																					
KCG1.5-30R1 J BORE		H1K	H1K	H1K	H1K	H1K	H1K																						
KCG1.5-40R1 J BORE			H1K	H1K	H1K	H1K	H1K																						
KCG1.5-50R1 J BORE				H1K	H1K	H1K	H1K	H1K																					
KCG1.5-60R1 J BORE					H1K	H1K	H1K	H1K	H1K																				
KCG1.5-80R1 J BORE						H1K	H1K	H1K	H1K	H1K																			
KCG1.5-100R1 J BORE							H1K	H1K	H1K	H1K	H1K																		

[Caution on J series]

- ① As available-on-request products, requires a lead-time for shipping within 2 working-days (excludes the day ordered), after placing an order. Please allow additional shipping time to get to your local distributor.
- ② Number of products we can process for one order is 1 to 20 units. For quantities of 21 or more pieces, we need to quote price and lead time.
- ③ Keyways are made according to JIS B1301 standards, Js9 tolerance.
- ④ Certain products which would otherwise have a very long tapped hole are counterbored to reduce the length of the tap.
- ⑤ For products having a tapped hole, a set screw is included.
- ⑥ When using H1T set screws for fastening gears to a shaft, only use this method for applications with the usage for light loads. For secure fastening, please use dowel pins in combination.