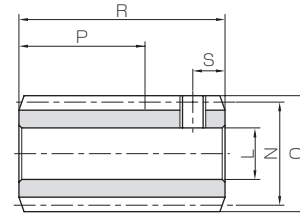


Specifications	
Precision grade	KHK W 001 grade 4
Reference section of gear	Normal plane
Gear teeth	Standard full depth
Normal pressure angle	20°
Material	SUS303
Heat treatment	—
Tooth hardness	(less than 187HB)



W2

Catalog No.	Normal module	Number of starts	Lead angle	Hand thread	Shape	Bore		Pitch dia.	Outside dia.	Face width	Hub width	Total length
						LH8	M					
KSUW0.5-R1	m0.5	1	2°36'	R	W2	5	—	11	12	—	—	18
KSUW0.5-R2		2	5°13'	R	W2	5	—	11	12	—	—	18
KSUW0.8-R1	m0.8	1	3°17'	R	W2	6	—	14	15.6	—	—	30
KSUW0.8-R2		2	6°34'	R	W2	6	—	14	15.6	—	—	30

[Caution on Product Characteristics] ① For W2-shaped products, a set screw is included. When setting up the mating wheel, make sure no friction occurs within the set screw.
② These worms produce axial thrust forces. See Page 362 for more details.

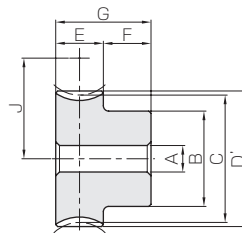
Set Screw		Weight (kg)	Catalog No.
Size	S		
M3	3	0.010	KSUW0.5-R1
M3	3	0.010	KSUW0.5-R2
M4	5	0.029	KSUW0.8-R1
M4	5	0.029	KSUW0.8-R2

[Caution on Secondary Operations] ① Please read "Caution on Performing Secondary Operations" (Page 362) when performing modifications and/or secondary operations for safety concerns.

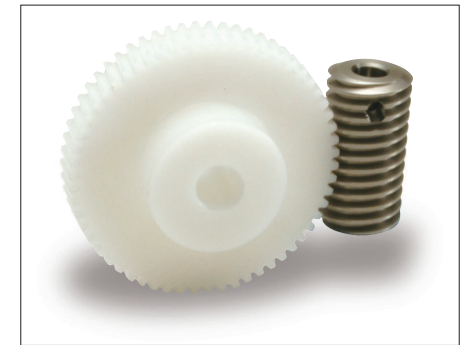
KDG
Plastic Worm Wheels



Specifications	
Precision grade	KHK W 002 grade 5
Reference section of gear	Normal plane
Gear teeth	Standard full depth
Normal pressure angle	20°
Material	Polyacetal
Heat treatment	—
Tooth hardness	—



HA



Catalog No.	Reduction ratio	Normal module	No. of teeth	Number of starts	Helix angle	Hand thread	Shape	Bore		Hub dia.	Pitch dia.	Throat dia.	Outside dia.	Face width
								A -0.05 -0.10	B					
KDG0.5-20R1	20	m0.5	20	1	2°36'	R	HA	4	9	10.01	—	11	5	
KDG0.5-20R2	10		20	2	5°13'	R	HA	4	9	10.04	—	11	5	
KDG0.5-30R1	30		30	1	2°36'	R	HA	4	12	15.02	—	16	5	
KDG0.5-30R2	15		30	2	5°13'	R	HA	4	12	15.06	—	16	5	
KDG0.5-40R1	40		40	1	2°36'	R	HA	5	15	20.02	—	21	5	
KDG0.5-50R1	50	m0.5	50	1	2°36'	R	HA	5	20	25.03	—	26	5	
KDG0.5-60R1	60		60	1	2°36'	R	HA	5	25	30.03	—	31	5	
KDG0.8-20R1	20	m0.8	20	1	3°17'	R	HA	5	12	16.03	—	17.6	9	
KDG0.8-20R2	10		20	2	6°34'	R	HA	5	12	16.11	—	17.6	9	
KDG0.8-30R1	30		30	1	3°17'	R	HA	5	18	24.04	—	25.6	9	
KDG0.8-30R2	15		30	2	6°34'	R	HA	5	18	24.16	—	25.6	9	
KDG0.8-40R1	40		40	1	3°17'	R	HA	6	20	32.05	—	33.6	9	
KDG0.8-50R1	50	m0.8	50	1	3°17'	R	HA	8	25	40.07	—	41.6	9	
KDG0.8-60R1	60		60	1	3°17'	R	HA	8	25	48.08	—	49.6	9	

[Caution on Product Characteristics] ① Worm Wheels are profile shifted to create the proper center distance.
② The allowable torques shown in the table are the calculated values according to the assumed usage conditions. Please see Page 358 for more details.
③ Since the bore is finished with a minus tolerance, you can use a shaft with a force fit.

Hub width	Total length	Mounting distance	Allowable torque (N-m)		Backlash (mm)	Weight (g)	Catalog No.
			Bending strength	Bending strength			
F	G	J	Bending strength	Bending strength			
7	12	10.5	0.067	0.0068	0~0.16	1.01	KDG0.5-20R1
7	12	10.5	0.067	0.0069	0~0.16	1.01	KDG0.5-20R2
7	12	13	0.11	0.011	0~0.16	2.21	KDG0.5-30R1
7	12	13	0.11	0.011	0~0.16	2.21	KDG0.5-30R2
7	12	15.5	0.16	0.016	0~0.16	3.72	KDG0.5-40R1
7	12	18	0.21	0.022	0~0.16	6.36	KDG0.5-50R1
7	12	20.5	0.26	0.027	0~0.16	9.67	KDG0.5-60R1
9	18	15	0.31	0.031	0.04~0.22	3.73	KDG0.8-20R1
9	18	15	0.31	0.032	0.04~0.22	3.73	KDG0.8-20R2
9	18	19	0.52	0.053	0.04~0.22	8.84	KDG0.8-30R1
9	18	19	0.52	0.053	0.04~0.22	8.84	KDG0.8-30R2
9	18	23	0.74	0.076	0.04~0.22	14.0	KDG0.8-40R1
9	18	27	0.98	0.10	0.04~0.22	21.6	KDG0.8-50R1
9	18	31	1.21	0.12	0.04~0.22	28.8	KDG0.8-60R1

[Caution on Secondary Operations] ① Please read "Caution on Performing Secondary Operations" (Page 362) when performing modifications and/or secondary operations for safety concerns.