



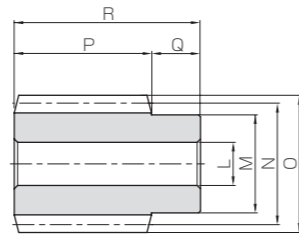
Stainless Steel Worms *J Series*

Module 2, 2.5, 3

KSUW



Specifications	
Precision grade	KHK W 001 grade 4 *
Reference section of gear	Normal plane
Gear teeth	Standard full depth
Normal pressure angle	14° 30' * *
Material	SUS303
Heat treatment	—
Tooth hardness	(less than 187HB)



W1

* The precision grade of J Series products is equivalent to the value shown in the table.
* * The pressure angle is at 20 degrees for module 2.5.

Catalog No. ● : J Series (Available-on-request)	Normal module	Number of starts	Lead angle	Hand thread	Shape	Bore		Pitch dia.	Outside dia.	Face width	Hub width	Total length
						L _{H7}	M					
KSUW2-R1 ● KSUW2-R1J12 ● KSUW2-R1J14	m2	1	3°42'	R	W1	12	25	31	35	32	14	46
					W1K	12						
					W1K	14						
KSUW2-R2 ● KSUW2-R2J12 ● KSUW2-R2J14	m2	2	7°25'	R	W1	12	30	37	42	45	18	63
					W1K	12						
					W1K	14						
KSUW2.5-R1 ● KSUW2.5-R1J15 ● KSUW2.5-R1J16 ● KSUW2.5-R1J17	m2.5	1	3°52'	R	W1	15	35	44	50	50	20	70
					W1K	15						
					W1K	16						
KSUW2.5-R2 ● KSUW2.5-R2J15 ● KSUW2.5-R2J16 ● KSUW2.5-R2J17	m2.5	2	7°46'	R	W1	15	35	44	50	50	20	70
					W1K	15						
					W1K	16						
KSUW3-R1 ● KSUW3-R1J17 ● KSUW3-R1J18 ● KSUW3-R1J19 ● KSUW3-R1J20	m3	1	3°55'	R	W1	16	35	44	50	50	20	70
					W1K	17						
					W1K	18						
KSUW3-R2 ● KSUW3-R2J17 ● KSUW3-R2J18 ● KSUW3-R2J19 ● KSUW3-R2J20	m3	2	7°50'	R	W1	16	35	44	50	50	20	70
					W1K	17						
					W1K	18						

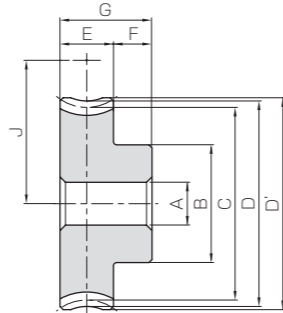
Module 2, 2.5, 3



Plastic Worm Wheels *J Series*



Specifications	
Precision grade	KHK W 002 grade 5 *
Reference section of gear	Normal plane
Gear teeth	Standard full depth
Normal pressure angle	14° 30' * *
Material	MC901 Nylon
Heat treatment	—
Tooth hardness	—



H1

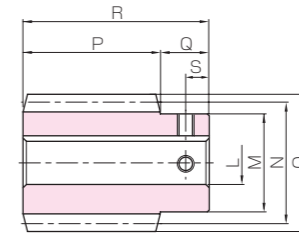
* The precision grade of this product is equivalent to the value shown in the table.
* * The pressure angle is at 20 degrees for module 2.5.

Catalog No.	Reduction ratio	No. of teeth	Number of starts	Helix angle	Hand thread	Bore		Pitch dia.	Throat dia.	Outside dia.	Face width	Hub width	Total Length	Mounting distance	Allowable torque (N·m)	Allowable torque (kgf·m)	Backlash (mm)	Weight (kg)	
						A	B												
KPG2-20R1	20	1	1	3°42'	R	H1	10	33	40.08	44	46	22	13	35	35.5	4.78	0.49	0~0.33	0.046
KPG2-20R2	10	2	2	7°25'			12	35	50.11	55	57.5	22	14	36	43.5	(8.46)	0.86	0~0.36	0.066
KPG2.5-20R1	20	1	1	3°52'	R	H1	12	35	50.46	55	57.5	22	14	36	43.5	(8.54)	0.87	0~0.36	0.066
KPG2.5-20R2	10	2	2	7°46'			15	50	60.14	66	69	28	15	43	52	(13.7)	1.40	0~0.38	0.13
KPG3-20R1	20	1	1	3°55'	R	H1	15	50	60.57	66	69	28	15	43	52	(13.8)	1.41	0~0.38	0.13
KPG3-20R2	10	2	2	7°50'			15	50	60.57	66	69	28	15	43	52	(13.8)	1.41	0~0.38	0.13

[Caution on Product Characteristics] ① Worm Wheels are profile shifted to create the proper center distance.
② Significant variations in temperature or humidity can cause dimensional changes in plastic gears (MC Nylon gears), for bore size (H8 when produced), tooth diameter, and backlash. Please see the section "Design of Plastic Gears" in separate technical reference book (Page 101).
③ The allowable torques shown in the table are the calculated values according to the assumed usage conditions. Usage above the value in brackets will exceed the maximum allowable sliding speed, if no lubrication is applied. So, lubrication is required. Please see Page 358 for more details.

[Caution on Secondary Operations] ① Please read "Caution on Performing Secondary Operations" (Page 362) when performing modifications and/or secondary operations for safety concerns.
② Plastic gears are susceptible to the effects of temperature and moisture. Dimensional changes may occur while performing secondary operations and during post-machining operations.

J Series



W1K

Stainless Steel Worms

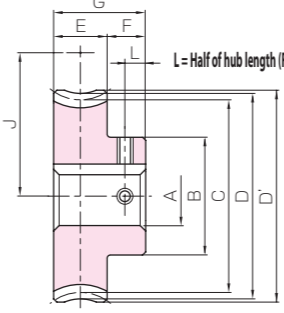


Keyway WidthxDepth	Set Screw Size	S	Weight (kg)	Catalog No. ● : J Series (Available-on-request)	
				Width	Depth
—	—	—	0.20	KSUW2-R1	KSUW2-R1J12
4 x 1.8	M4	7	0.20	KSUW2-R1J12	KSUW2-R1J14
5 x 2.3	M4	7	0.18	KSUW2-R1J12	KSUW2-R1J14
—	—	—	0.20	KSUW2-R2	KSUW2-R2J12
4 x 1.8	M4	7	0.20	KSUW2-R2J12	KSUW2-R2J14
5 x 2.3	M4	7	0.18	KSUW2-R2J12	KSUW2-R2J14
—	—	—	0.39	KSUW2.5-R1	KSUW2.5-R1J15
5 x 2.3	M4	9	0.38	KSUW2.5-R1J15	KSUW2.5-R1J16
5 x 2.3	M4	9	0.37	KSUW2.5-R1J16	KSUW2.5-R1J17
5 x 2.3	M4	9	0.36	KSUW2.5-R1J17	KSUW2.5-R1J17
—	—	—	0.39	KSUW2.5-R2	KSUW2.5-R2J15
5 x 2.3	M4	9	0.38	KSUW2.5-R2J15	KSUW2.5-R2J16
5 x 2.3	M4	9	0.37	KSUW2.5-R2J16	KSUW2.5-R2J17
5 x 2.3	M4	9	0.36	KSUW2.5-R2J17	KSUW2.5-R2J17
—	—	—	0.63	KSUW3-R1	KSUW3-R1J17
5 x 2.3	M4	10	0.62	KSUW3-R1J17	KSUW3-R1J18
6 x 2.8	M5	10	0.59	KSUW3-R1J18	KSUW3-R1J19
6 x 2.8	M5	10	0.58	KSUW3-R1J19	KSUW3-R1J20
6 x 2.8	M5	10	0.56	KSUW3-R1J20	KSUW3-R1J20
—	—	—	0.63	KSUW3-R2	KSUW3-R2J17
5 x 2.3	M4	10	0.62	KSUW3-R2J17	KSUW3-R2J18
6 x 2.8	M5	10	0.59	KSUW3-R2J18	KSUW3-R2J19
6 x 2.8	M5	10	0.58	KSUW3-R2J19	KSUW3-R2J20
6 x 2.8	M5	10	0.56	KSUW3-R2J20	KSUW3-R2J20

[Caution on Product Characteristics] ① These worms produce axial thrust forces. See Page 362 for more details.
[Caution on Secondary Operations] ① Please read "Caution on Performing Secondary Operations" (Page 362) when performing modifications and/or secondary operations for safety concerns.
[Caution on J series] ① As available-on-request products, requires a lead-time for shipping within 2 working-days (excludes the day ordered), after placing an order. Please allow additional shipping time to get to your local distributor.
② Number of products we can process for one order is 1 to 20 units. For quantities of 21 or more pieces, we need to quote price and lead time.
③ Keyways are made according to JIS B1301 standards, Js9 tolerance.
④ For products having a tapped hole, a set screw is included.

Module 2, 2.5, 3

J Series



H1K

Plastic Worm Wheels



To order J Series products, please specify; Catalog No. + J + BORE

Bore	* The product shapes of J Series items are identified by background color.															
	10	12	14	15	16	17	18	19	20	22	25	28	30			
Keyway Js9	4 x 1.8			5 x 2.3						6 x 2.8				8 x 3.3		
Screw size	4 x 1.8			5 x 2.3						6 x 2.8				8 x 3.3		
Catalog No.	M4			M5						M6						
PG2-20R1 J BORE	H1K	H1K	H1K	H1K	H1K	H1K										
PG2-20R2 J BORE	H1K	H1K	H1K	H1K	H1K	H1K										
PG2.5-20R1 J BORE		H1K	H1K	H1K	H1K	H1K	H1K	H1K								
PG2.5-20R2 J BORE		H1K	H1K	H1K	H1K	H1K	H1K	H1K	H1K							
PG3-20R1 J BORE				H1K	H1K	H1K	H1K	H1K	H1K	H1K	H1K	H1K	H1K	H1K	H1K	
PG3-20R2 J BORE				H1K	H1K	H1K	H1K	H1K	H1K	H1K	H1K	H1K	H1K	H1K	H1K	

[Caution on J series] ① As available-on-request products, requires a lead-time for shipping within 2 working-days (excludes the day ordered), after placing an order. Please allow additional shipping time to get to your local distributor.
② Number of products we can process for one order is 1 to 20 units. For quantities of 21 or more pieces, we need to quote price and lead time.
③ Keyways are made according to JIS B1301 standards, Js9 tolerance.
④ Certain products which would otherwise have a very long tapped hole are counterbored to reduce the length of the tap.
⑤ For products having a tapped hole, a set screw is included.