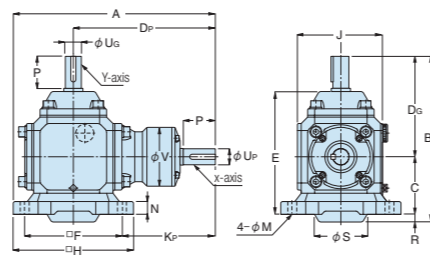
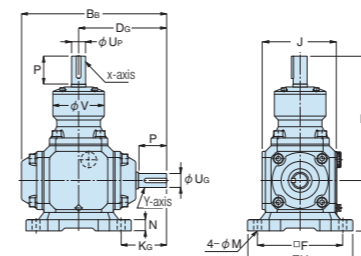


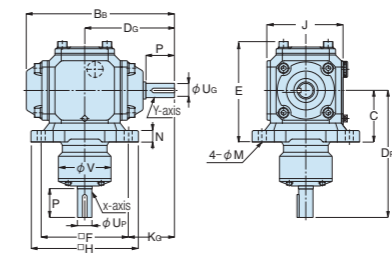
LA, LB



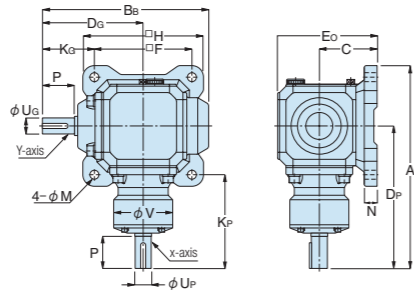
LE, LF



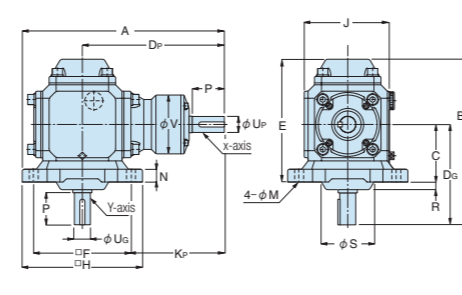
LI, LJ



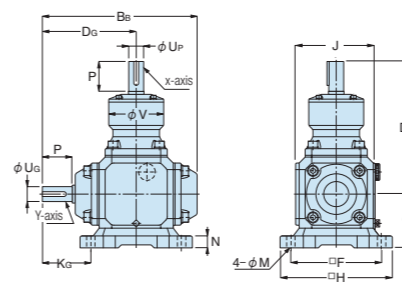
LM, LN



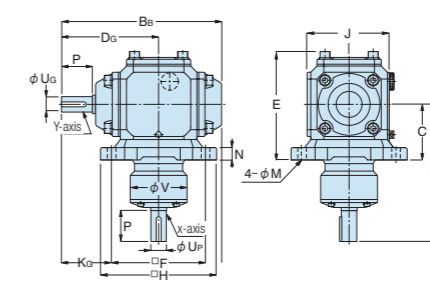
LC, LD



LG, LH



LK, LL



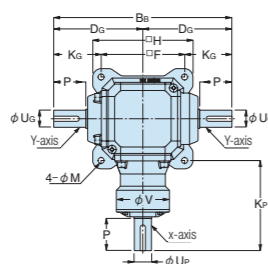
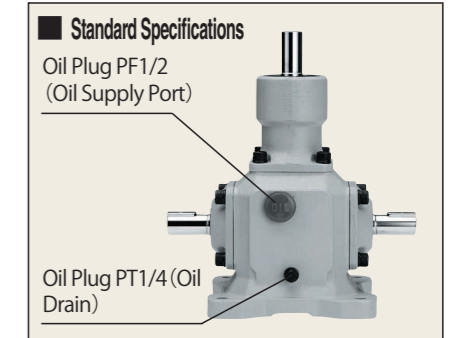
LO, LP

Catalog No.	Speed ratio	A	B _B	C	D _P	D _G	E	E ₀	F	H	J	K _P	K _G	φM	N	P	R	φS
KCBX-191L	1:1	257	193	76	180	116	146	129	125	154	109	117.5	53.5	10.5	17	38	—	—
KCBX-192L	1:2																	
KCBX-251L	1:1	316	259	90	222	157	177.5	155	152	188	133	146	81	14	20	50	12	82.5
KCBX-252L	1:2																	
KCBX-321L	1:1	340	277	100	242	168	192.5	174	160	196	151	162	88	14	20	55	9	88.5
KCBX-322L	1:2																	
KCBX-401L	1:1	425	337	115	308	208	225	200	195	234	173	210.5	110.5	14	22	75	14	114.5
KCBX-402L	1:2																	

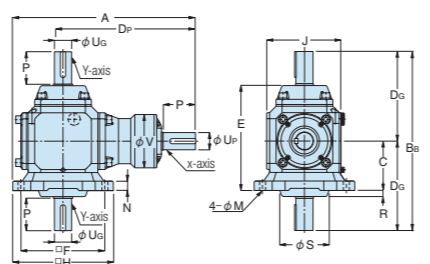
φV	X-axis φU _P	Y-axis φU _G	Key	Backlash of shaft rotation	Weight (kg)	Catalog No.
66	19	19	6 x 6 x 27 l	11' ~30'	10.0	KCBX-191L
	18			17' ~47'		KCBX-192L
92	25	25	8 x 7 x 40 l	9' ~22'	17.0	KCBX-251L
				15' ~36'		KCBX-252L
100	32	32	10 x 8 x 50 l	9' ~21'	22.0	KCBX-321L
				15' ~36'		KCBX-322L
124	40	40	12 x 8 x 60 l	8' ~20'	33.0	KCBX-401L
				15' ~37'		KCBX-402L

[Caution]

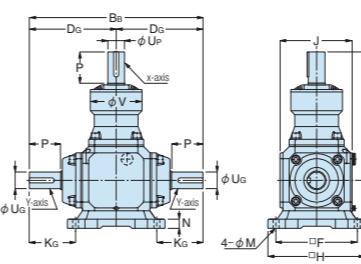
- The key grooves in the X-axis and the Y-axis do not always coincide in phase with each other.
- The tolerance of shaft diameter is JIS h6.
- The key dimensions are per JIS B 1301-1976 (Standard Grade)
- The backlash angles are measured at the X-axis (Input Shaft).
- Sides of the oil plugs are for the supply port → PF 1/2 and for the drain port → PT 1/4 (standard specifications.) We can accept as a special order units that are mounted on the ceiling or on a wall. Please let us know at the time or ordering.



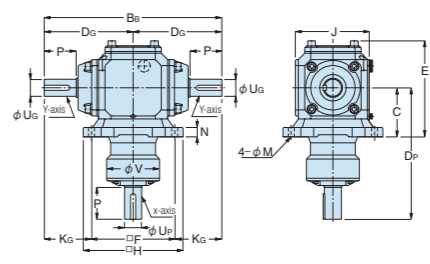
TA, TB



TC, TD



TE, TF

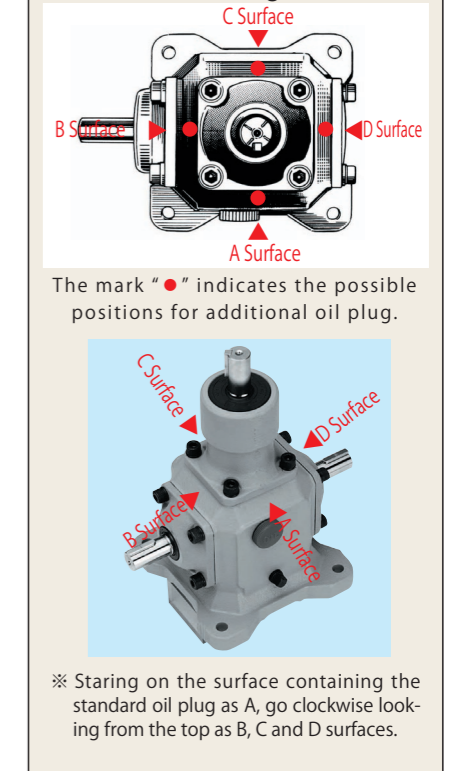


TG, TH

Catalog No.	Speed ratio	A	B _B	C	D _P	D _G	E	E ₀	F	H	J	K _P	K _G	φM	N	P	R	φS
KCBX-191T	1:1	257	232	76	180	116	146	129	125	154	109	117.5	53.5	10.5	17	38	—	—
KCBX-192T	1:2																	
KCBX-251T	1:1	316	314	90	222	157	177.5	155	152	188	133	146	81	14	20	50	12	82.5
KCBX-252T	1:2																	
KCBX-321T	1:1	340	336	100	242	168	192.5	174	160	196	151	162	88	14	20	55	9	88.5
KCBX-322T	1:2																	
KCBX-401T	1:1	425	416	115	308	208	225	200	195	234	173	210.5	110.5	14	22	75	14	114.5
KCBX-402T	1:2																	

φV	X-axis φU _P	Y-axis φU _G	Key	Backlash of shaft rotation	Weight (kg)	Catalog No.
66	19	19	6 x 6 x 27 l	11' ~30'	10.0	KCBX-191T
	18			17' ~47'		KCBX-192T
92	25	25	8 x 7 x 40 l	9' ~22'	18.0	KCBX-251T
				15' ~36'		KCBX-252T
100	32	32	10 x 8 x 50 l	9' ~21'	23.0	KCBX-321T
				15' ~36'		KCBX-322T
124	40	40	12 x 8 x 60 l	8' ~20'	34.0	KCBX-401T
				15' ~37'		KCBX-402T

Additional Oil Plug Locations



Please place one of the orientation codes (A to P) from Page 422 on the box at the end of the catalog number.

Please place one of the orientation codes (A - P) from Page 422 on the box at the end of the catalog number.

Since these products are assembled to each customer's specifications, the delivery lead time is about 10 working days after placing an order. These units are not available from stock.